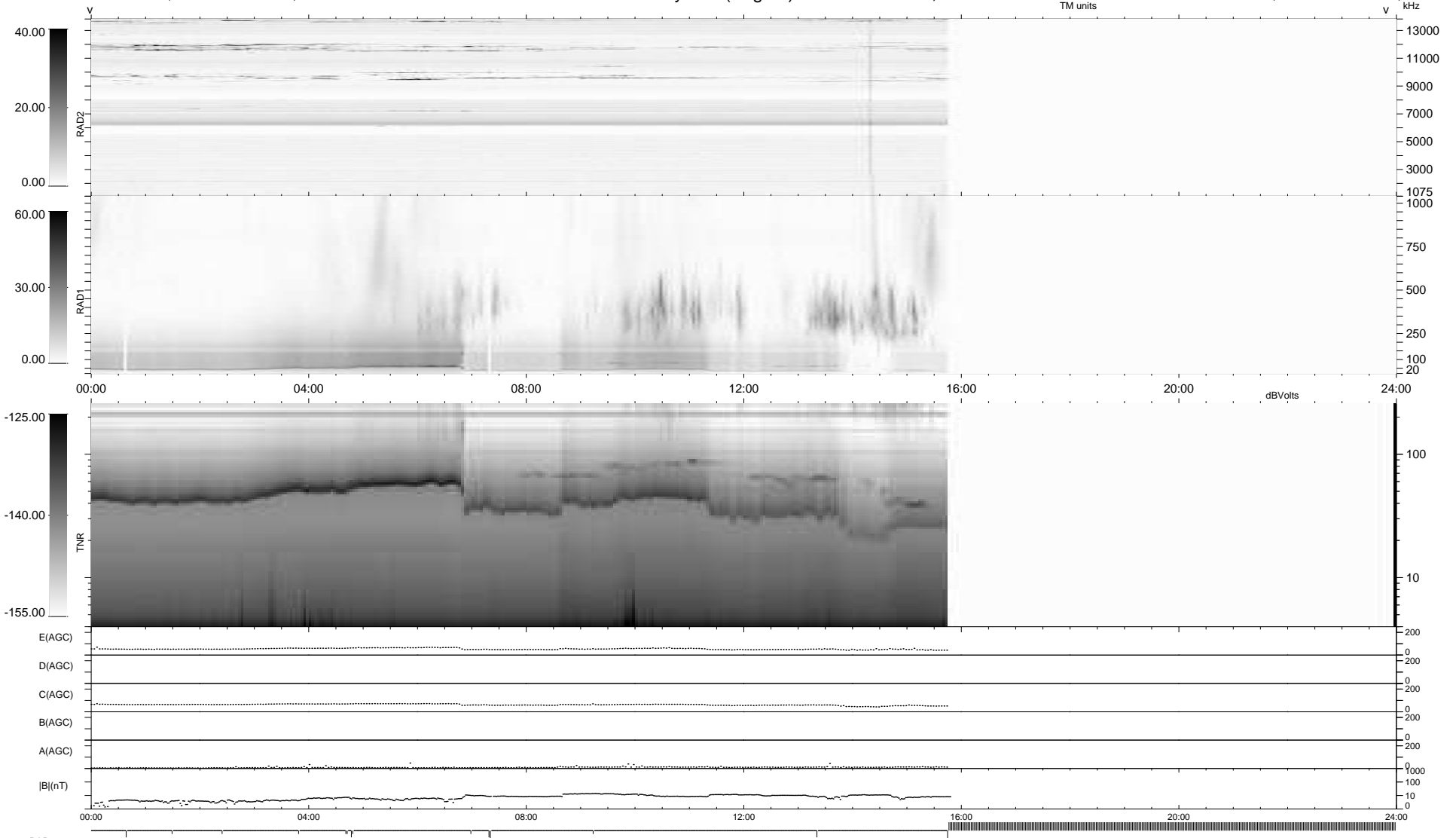


14 bad + 603 good MF/939MF projected (64%) - 322 missing MFs
 Avg interval = 180 secs
 Re = -241.08 (220.16, -98.10, 5.47 GSE)

1.7d VMS-SunOS LZ version = v01
 DAILY Tue Jan 12, 2010
 Re = 240.13 (219.10, -98.16, 4.69 GSE)

WIND/WAVES Summary Plot (Page 1) for 11-JAN-2010, DOY = 11



```

RAD2
Antenna Ey .....
Mode LIN(1) .....
SUM/SEP SEP .....
Toggle OFF .....

RAD1
Antenna Ex .....
Mode LIS(2,4) .....
SUM/SEP SUM .....
Toggle OFF .....

TNR
Antenna ExEy .....
Mode A-32 .....
Sweep ACE .....
  
```