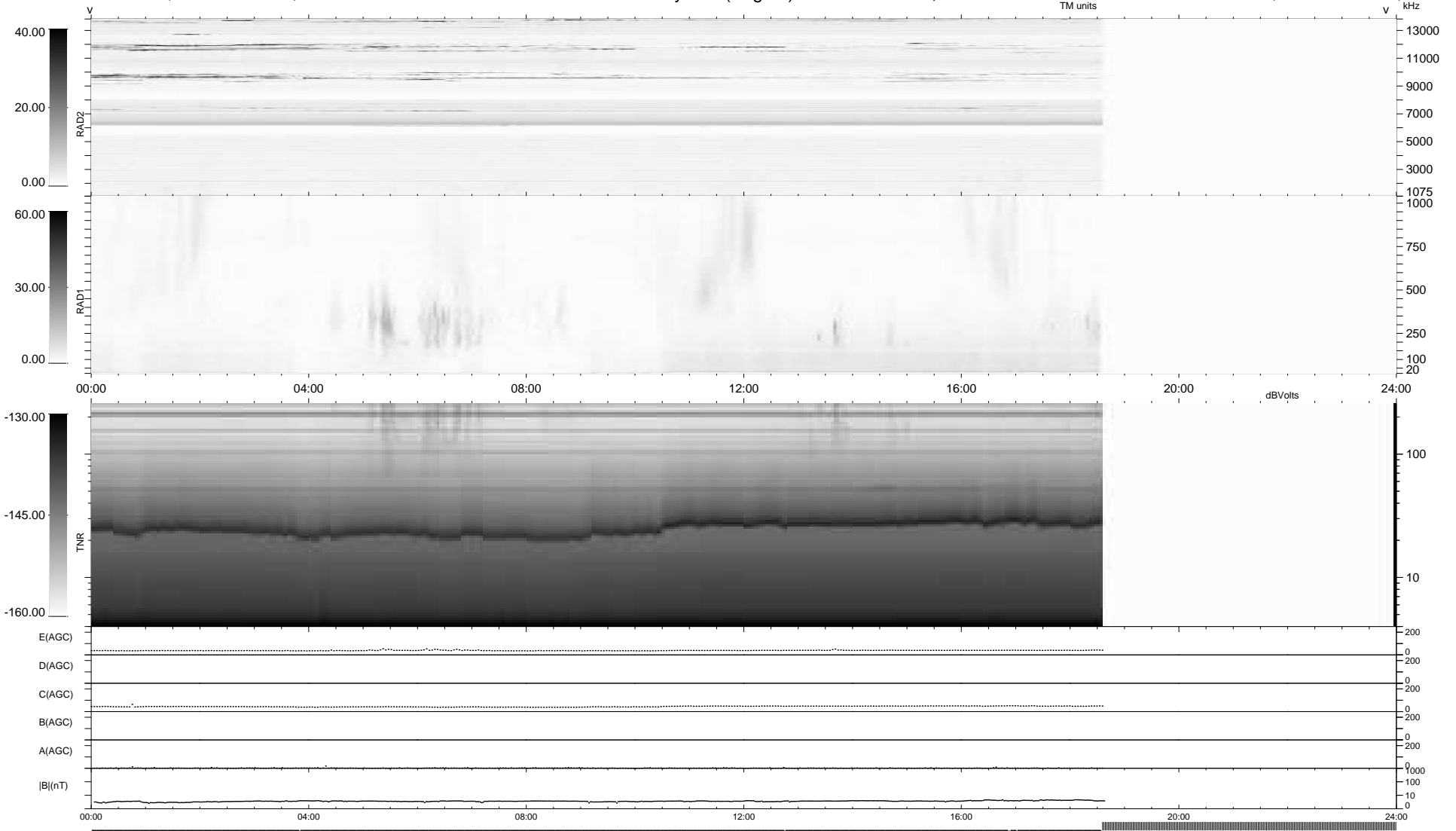


6 bad + 721 good MF/939MF projected (76%) - 212 missing MFs  
 Avg interval = 180 secs  
 Re = -244.34 (224.38, -96.34, 8.55 GSE)

1.7d VMS-SunOS LZ version = v01  
 DAILY Sat Jan 9, 2010  
 Re = 243.61 (223.33, -97.01, 7.79 GSE)

### WIND/WAVES Summary Plot (Page 1) for 07-JAN-2010, DOY = 7



```

RAD2
Antenna Ey .....
Mode LIN(1) .....
SUM/SEP SEP .....
Toggle OFF .....

RAD1
Antenna Ex .....
Mode LIS(2,4) .....
SUM/SEP SUM .....
Toggle OFF .....

TNR
Antenna ExEy .....
Mode A-32 .....
Sweep ACE .....
  
```