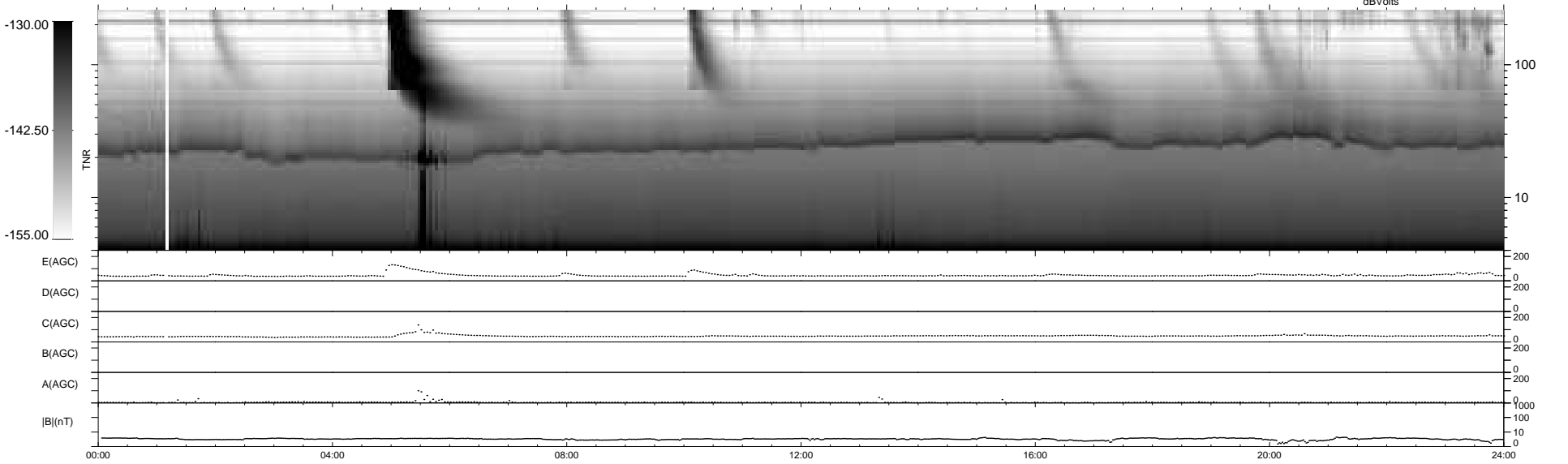
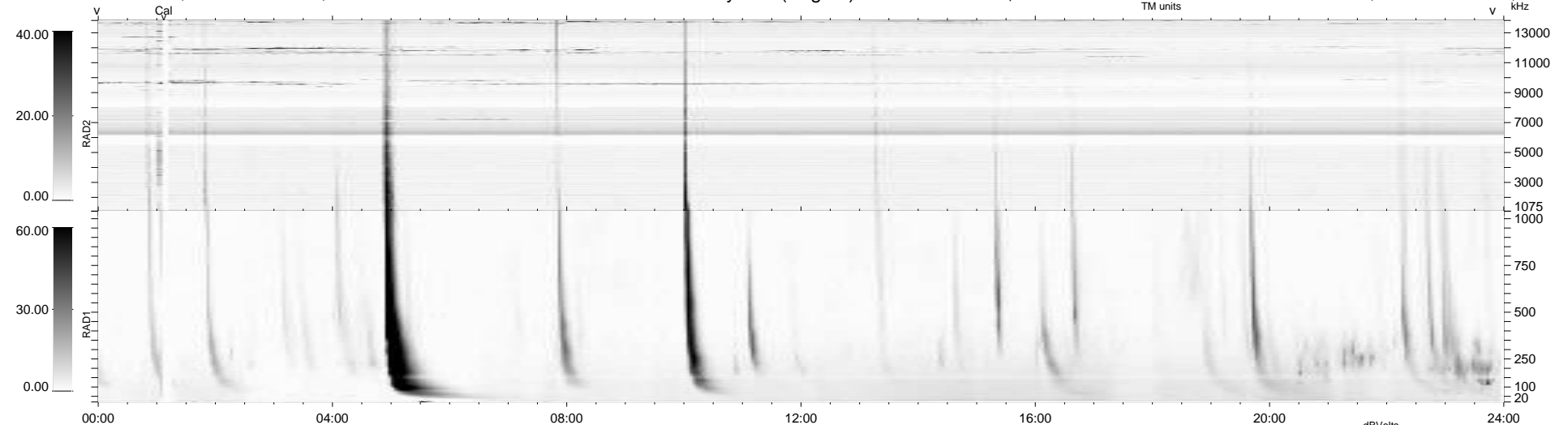


10 bad + 929 good MF/939MF projected (98%) - 0 missing MFs
 Avg interval = 180 secs
 Re = 254.17 (243.84, -69.17, 19.06 GSE)

1.7d VMS-SunOS LZ version = v01
 DAILY Wed Dec 23, 2009
 Re = 253.63 (242.64, -71.48, 18.55 GSE)

WIND/WAVES Summary Plot (Page 1) for 22-DEC-2009, DOY = 356



E(AGC) 0 200
 D(AGC) 0 200
 C(AGC) 0 200
 B(AGC) 0 200
 A(AGC) 0 200
 |B|(nT) 0 1000 100 10 0

00:00 04:00 08:00 12:00 16:00 20:00 24:00

RAD2
 Antenna Ey
 Mode LIN(1)
 SUM/SEP SEP
 Toggle OFF
 RAD1
 Antenna Ex
 Mode LIS(2,4)
 SUM/SEP SUM
 Toggle OFF
 TNR
 Antenna ExEy
 Mode A-32
 Sweep ACE