

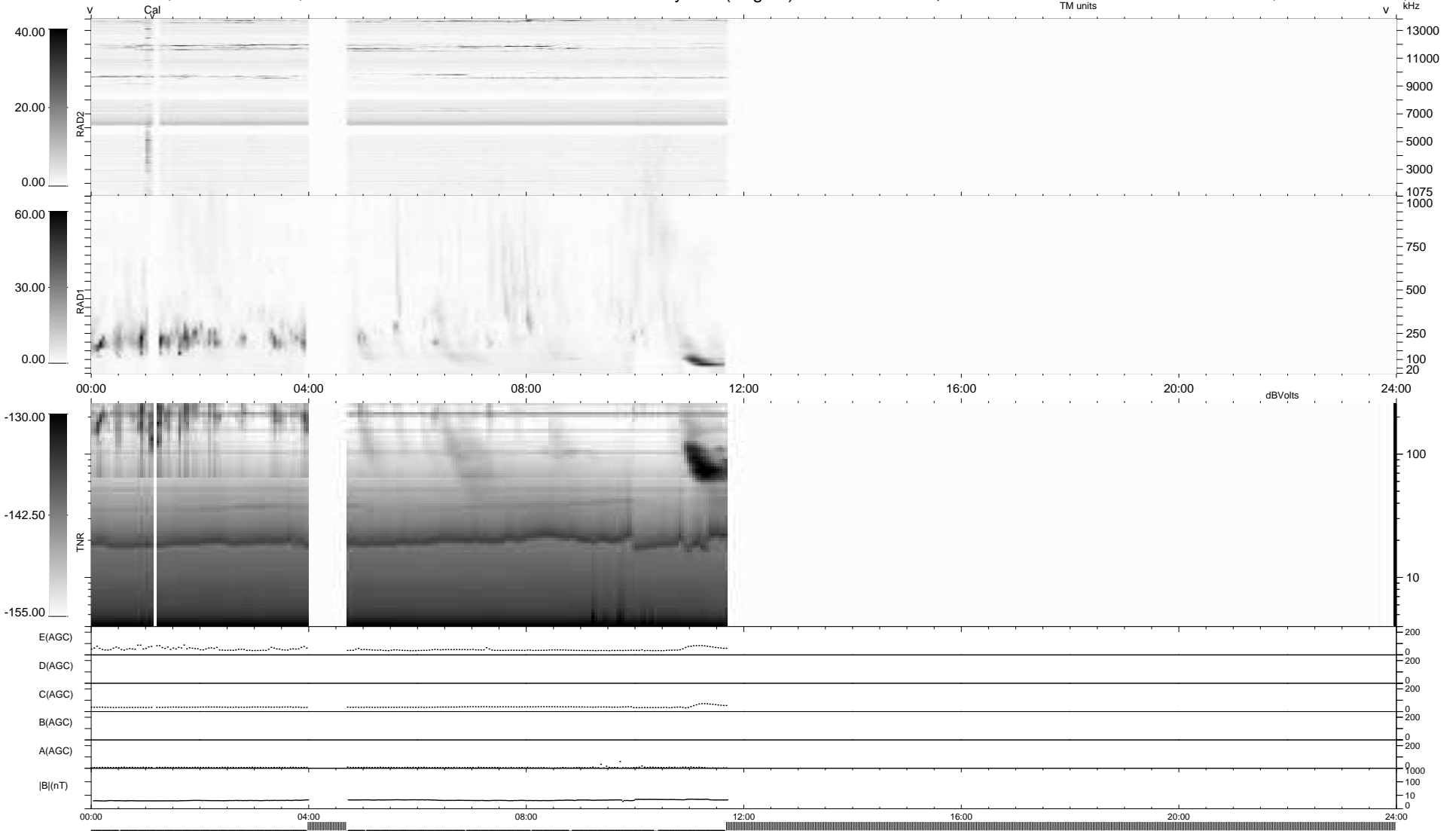
12 bad + 417 good MF/939MF projected (44%) - 510 missing MFs  
 Avg interval = 180 secs  
 Re = - 255.17 (246.11, -64.36, 20.03 GSE)

1.7d VMS-SunOS

LZ version = v01

WIND/WAVES Summary Plot (Page 1) for 20-DEC-2009, DOY = 354

DAILY Tue Dec 22, 2009  
 Re = 254.70 (245.01, -66.78, 19.56 GSE)



RAD2  
 Antenna Ey .....  
 Mode LIN(1) .....  
 SUM/SEP SEP .....  
 Toggle OFF .....  
 RAD1  
 Antenna Ex .....  
 Mode LIS(2,4) .....  
 SUM/SEP SUM .....  
 Toggle OFF .....  
 TNR  
 Antenna ExEy .....  
 Mode A-32 .....  
 Sweep ACE .....