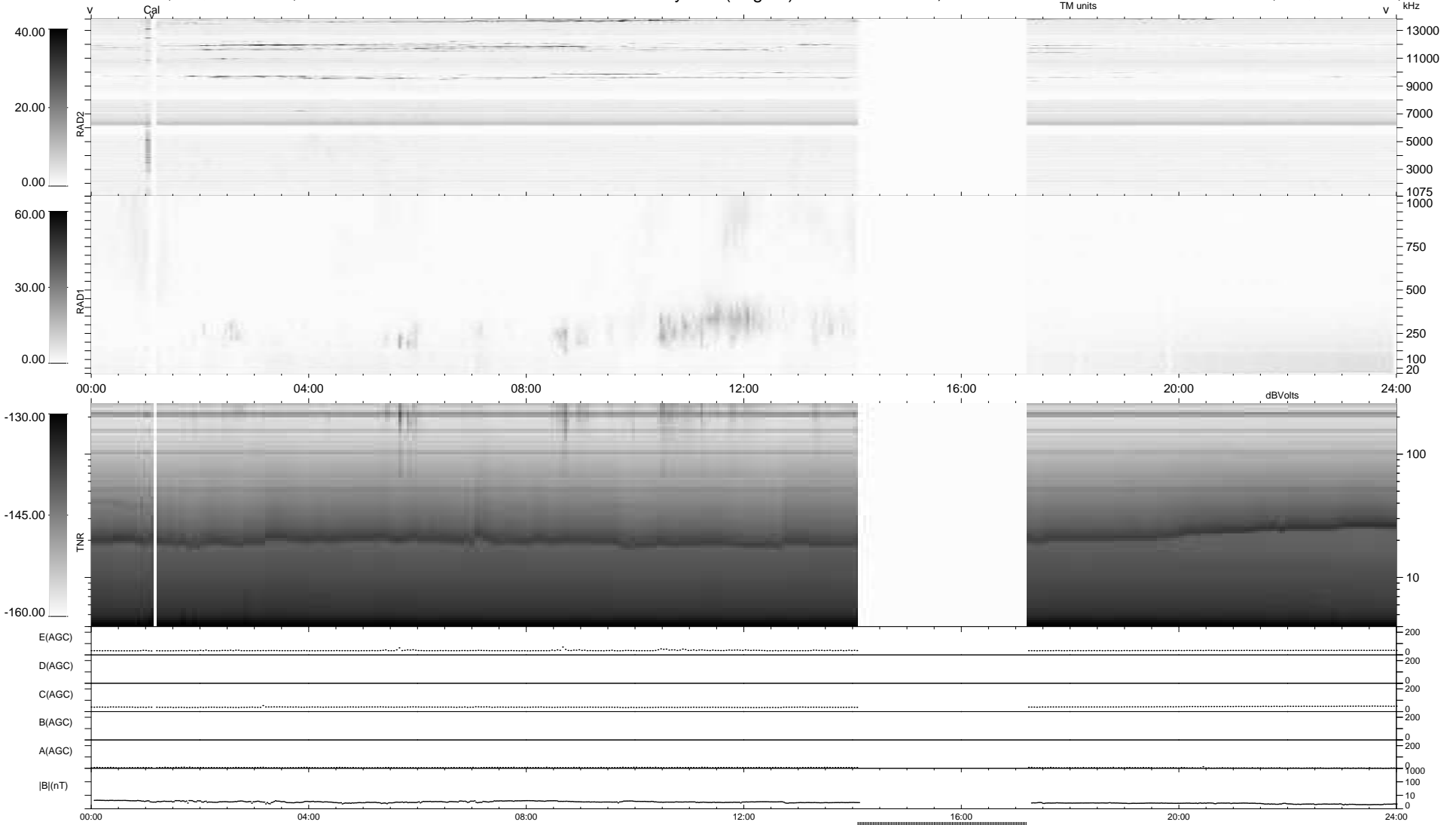


13 bad + 804 good MF/939MF projected (85%) - 122 missing MFs
 Avg interval = 180 secs
 Re = 257.48 (256.25, -1.47, 25.05 GSE)

1.7d VMS-SunOS LZ version = v01
 DAILY Tue Dec 1, 2009
 Re = 257.37 (256.10, -5.04, 25.03 GSE)

WIND/WAVES Summary Plot (Page 1) for 30-NOV-2009, DOY = 334



RAD2
 Antenna Ey
 Mode LIN(1)
 SUM/SEP SEP
 Toggle OFF
 RAD1
 Antenna Ex
 Mode LIS(2,4)
 SUM/SEP SUM
 Toggle OFF
 TNR
 Antenna ExEy
 Mode A-32
 Sweep ACE