

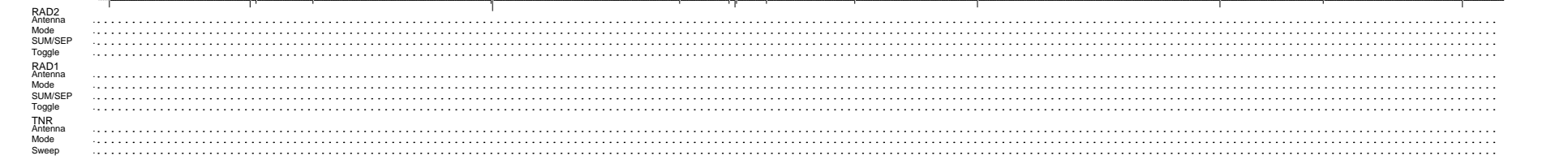
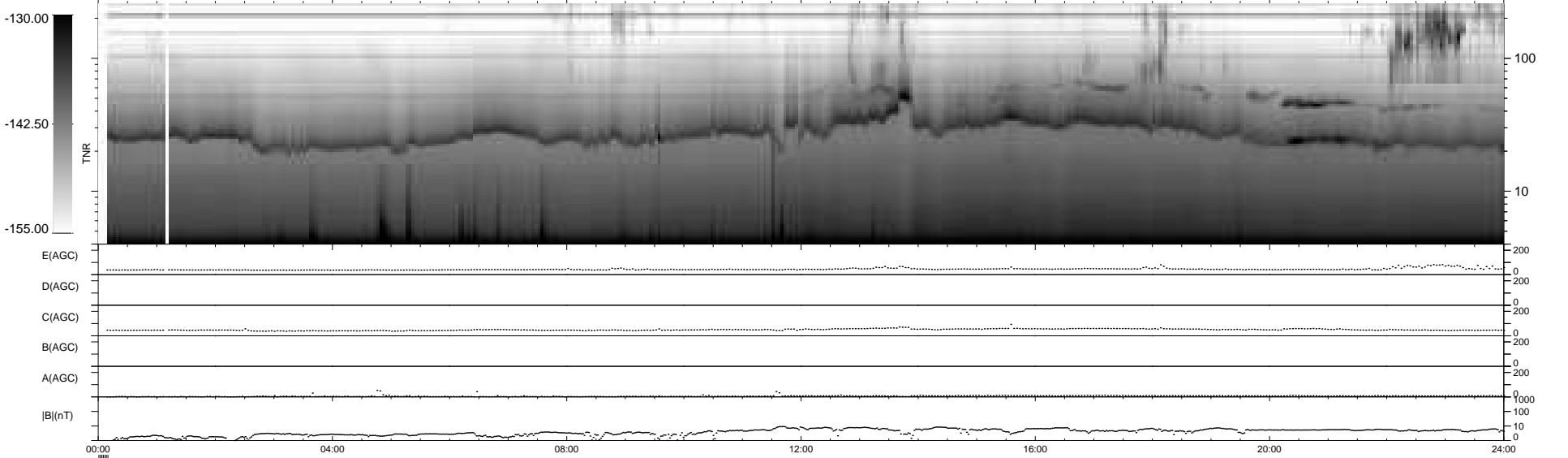
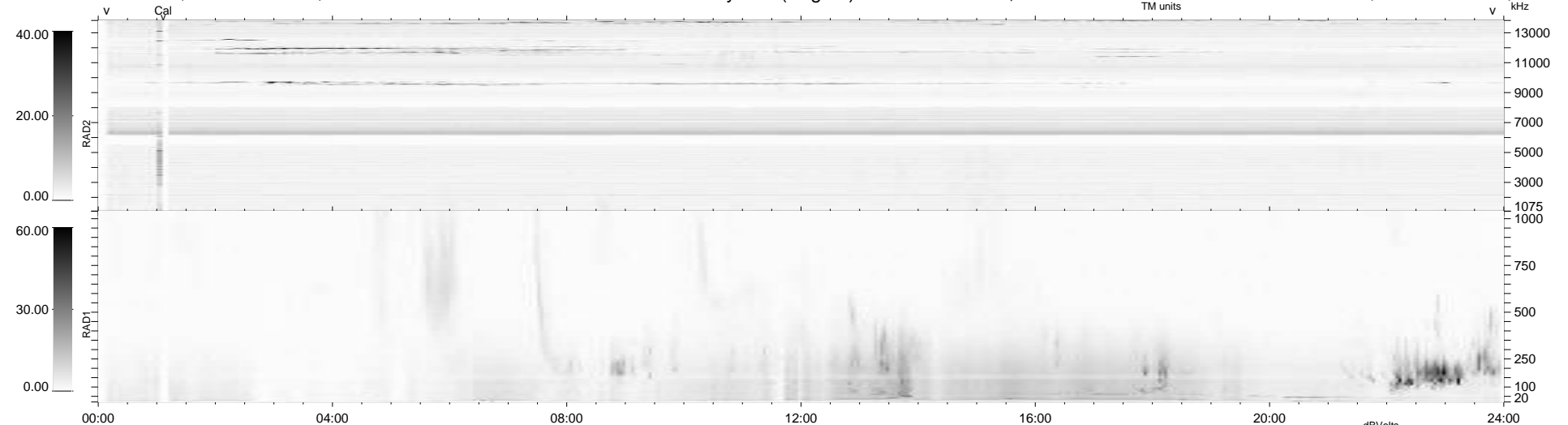
16 bad + 916 good MF/939MF projected (97%) - 7 missing MFs
Avg interval = 180 secs
Re = 258.38 (256.46, 19.47, 24.63 GSE)

1.7d VMS-SunOS

LZ version = v01

WIND/WAVES Summary Plot (Page 1) for 24-NOV-2009, DOY = 328

DAILY Sun Nov 29, 2009
Re = 258.24 (256.54, 16.13, 24.76 GSE)



RAD2
Antenna
Mode
SUM/SEP
Toggle
RAD1
Antenna
Mode
SUM/SEP
Toggle
TNR
Antenna
Mode
Sweep