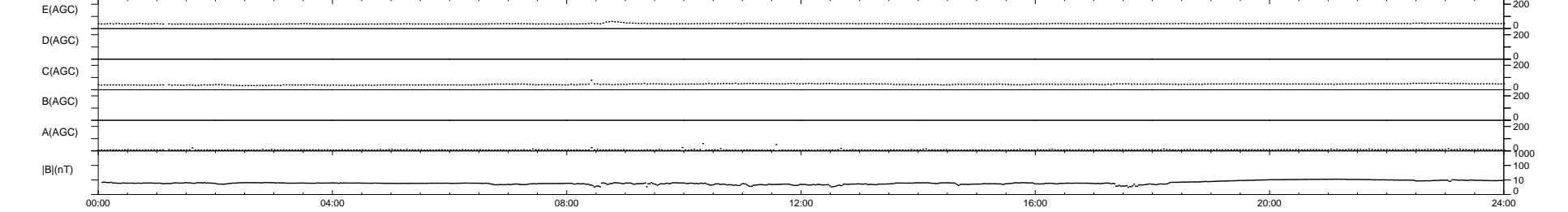
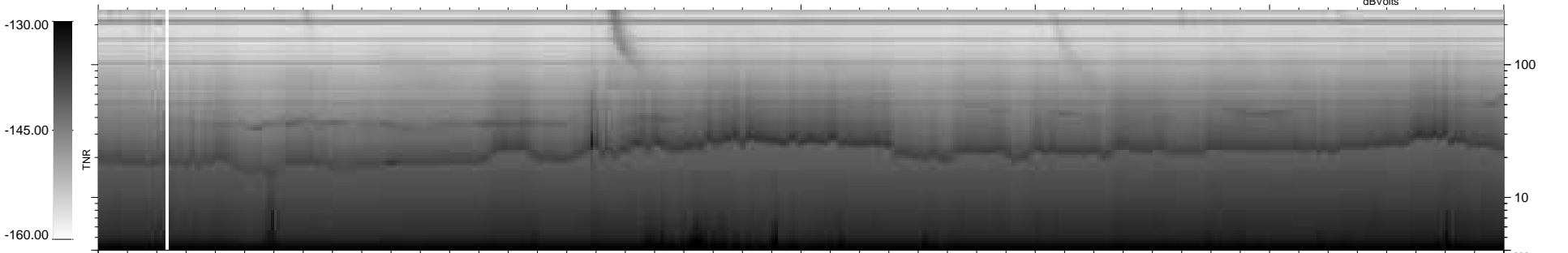
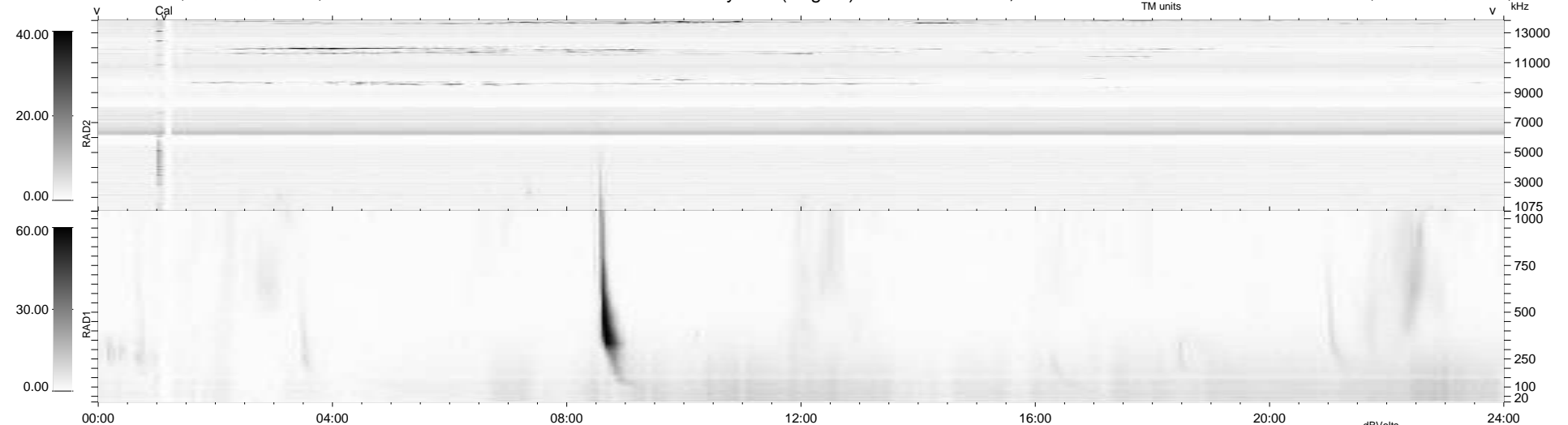


12 bad + 927 good MF/939MF projected (98%) - 0 missing MFs
 Avg interval = 180 secs
 Re = 258.70 (255.54, 32.51, 23.82 GSE)

1.7d VMS-SunOS LZ version = v01
 DAILY Sun Nov 29, 2009
 Re = 258.67 (255.87, 29.37, 24.05 GSE)

WIND/WAVES Summary Plot (Page 1) for 20-NOV-2009, DOY = 324



RAD2
 Antenna Ey
 Mode LIN(1)
 SUM/SEP SEP
 Toggle OFF
 RAD1
 Antenna Ex
 Mode LIS(2,4)
 SUM/SEP SUM
 Toggle OFF
 TNR
 Antenna ExEy
 Mode A-32
 Sweep ACE