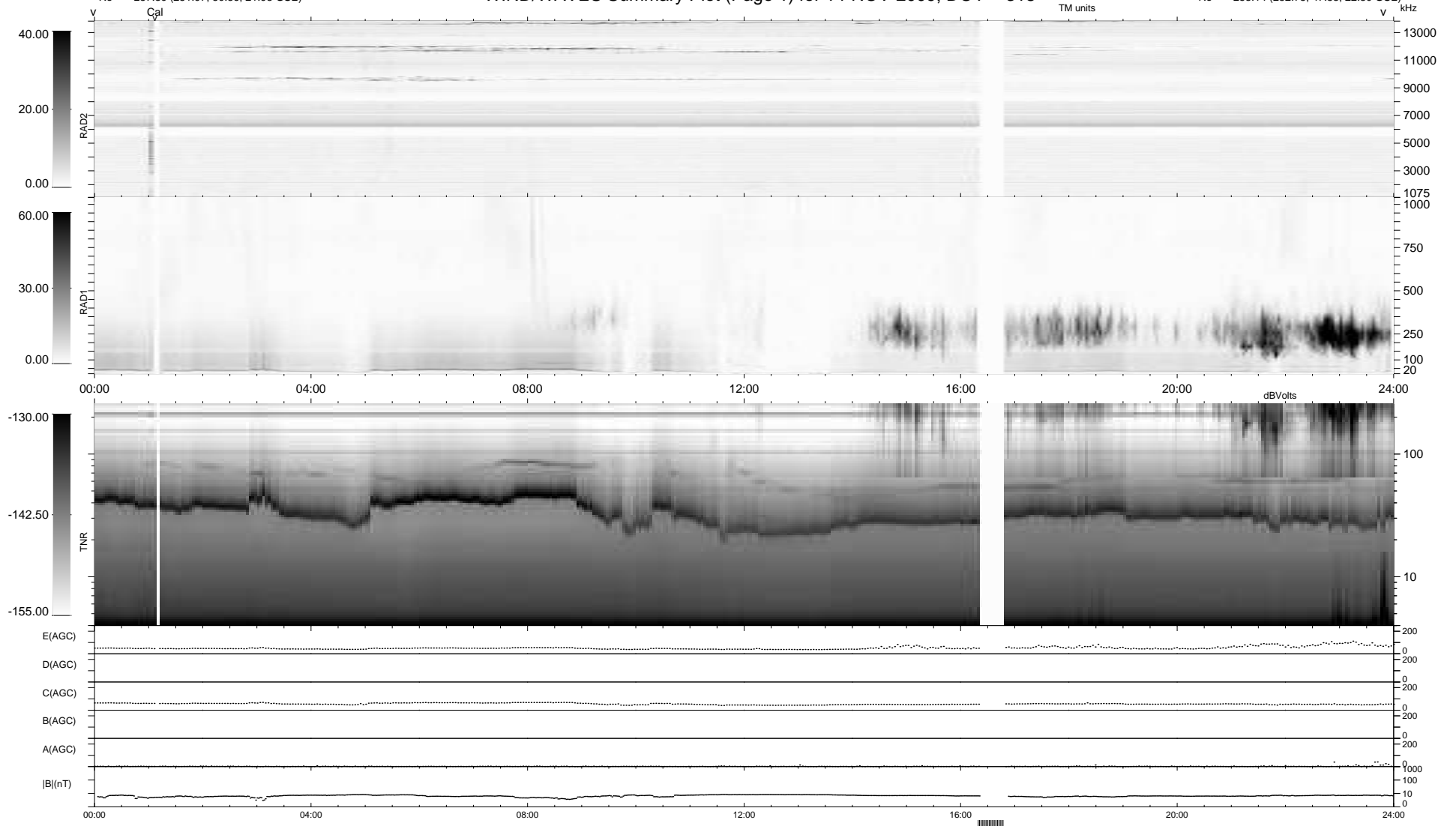


7 bad + 913 good MF/939MF projected (97%) - 19 missing MFs
 Avg interval = 180 secs
 Re = 257.89 (251.97, 50.36, 21.93 GSE)

1.7d VMS-SunOS LZ version = v01
 DAILY Sun Nov 15, 2009
 Re = 258.14 (252.75, 47.53, 22.30 GSE)

WIND/WAVES Summary Plot (Page 1) for 14-NOV-2009, DOY = 318



RAD2
 Antenna Ey
 Mode LIN(1)
 SUM/SEP SEP
 Toggle OFF
 RAD1
 Antenna Ex
 Mode LIS(2,4)
 SUM/SEP SUM
 Toggle OFF
 TNR
 Antenna ExEy
 Mode A-32
 Sweep ACE