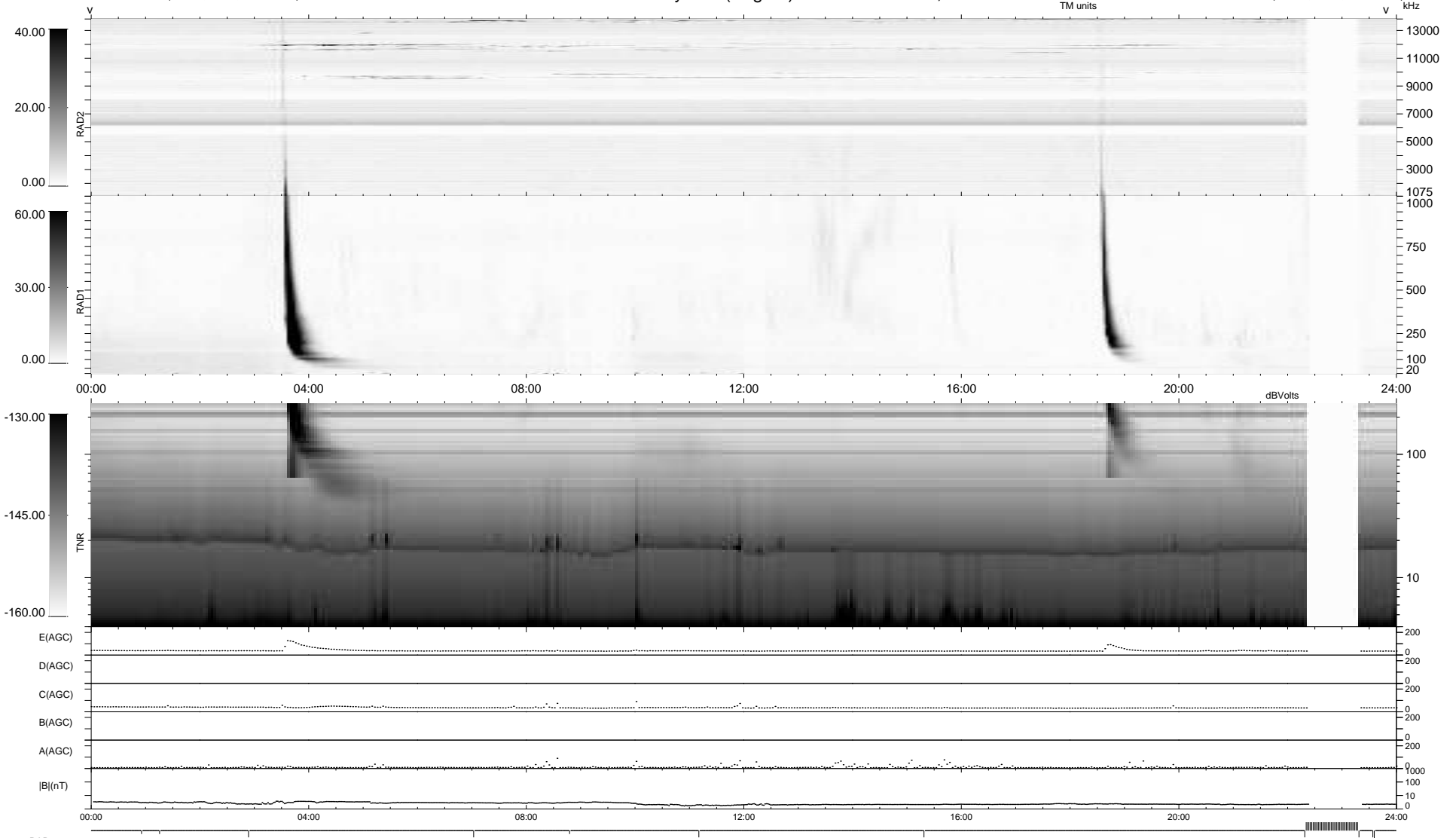


11 bad + 890 good MF/939MF projected (94%) - 38 missing MFs  
 Avg interval = 180 secs  
 Re = 253.71 (240.61, 78.70, 16.70 GSE)

1.7d VMS-SunOS LZ version = v01  
 DAILY Thu Nov 19, 2009  
 Re = 254.08 (241.69, 76.44, 17.27 GSE)

WIND/WAVES Summary Plot (Page 1) for 03-NOV-2009, DOY = 307



RAD2 Antenna Ey .....  
 Mode LIN(1) .....  
 SUM/SEP SEP .....  
 Toggle OFF .....  
 RAD1 Antenna Ex .....  
 Mode LIS(2,4) .....  
 SUM/SEP SUM .....  
 Toggle OFF .....  
 TNR Antenna ExEy .....  
 Mode A-32 .....  
 Sweep ACE .....