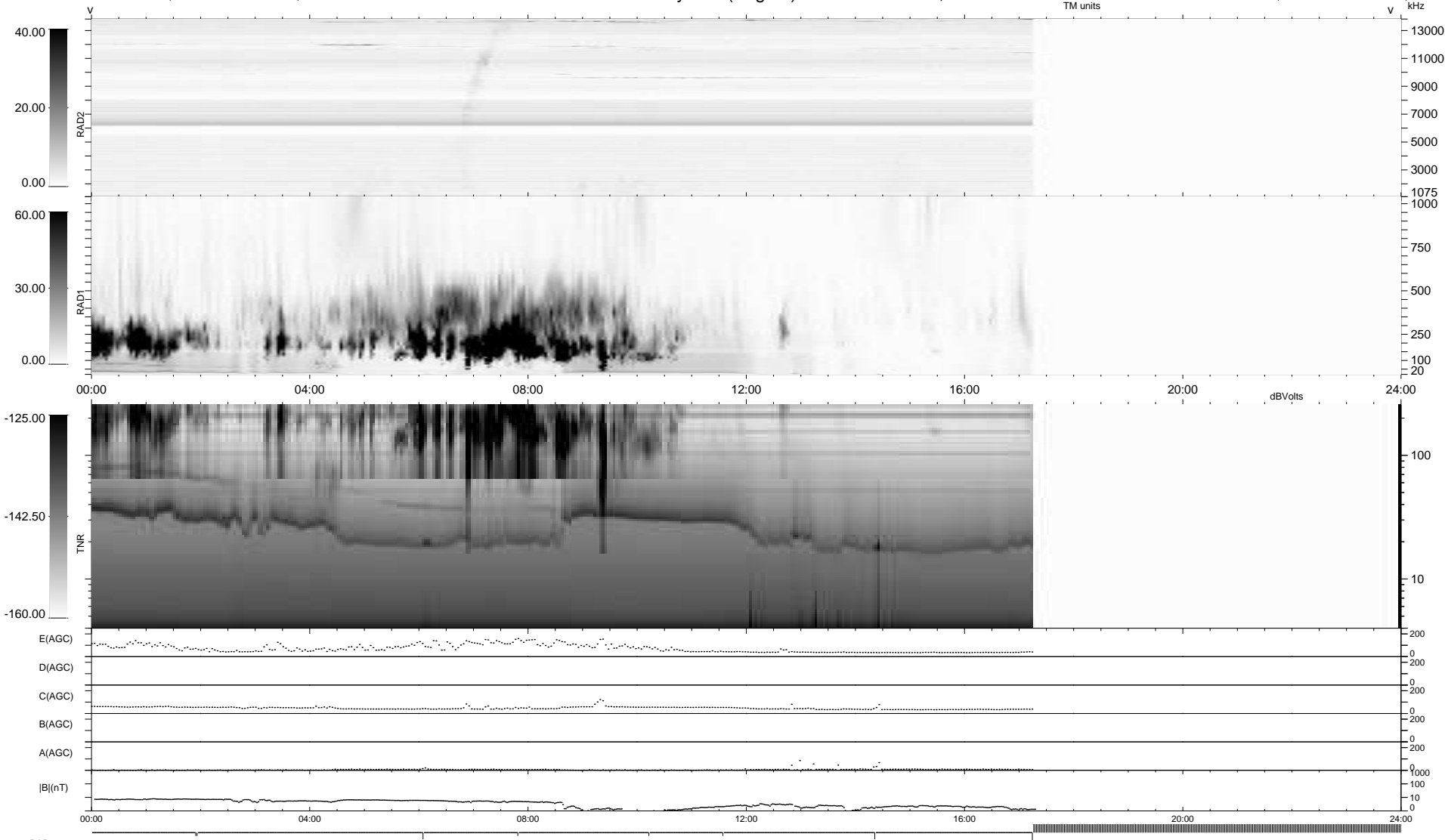


8 bad + 667 good MF/939MF projected (71%) - 264 missing MFs
 Avg interval = 180 secs
 Re = - 252.24 (236.42, 86.77, 14.20 GSE)

1.7d VMS-SunOS LZ version = v01
 DAILY Sat Oct 31, 2009
 Re = 252.61 (237.44, 84.94, 14.85 GSE)

WIND/WAVES Summary Plot (Page 1) for 30-OCT-2009, DOY = 303



```

RAD2
Antenna Ey .....
Mode LIN(1) .....
SUM/SEP SEP .....
Toggle OFF .....

RAD1
Antenna Ex .....
Mode LIS(2,4) .....
SUM/SEP SUM .....
Toggle OFF .....

TNR
Antenna ExEy .....
Mode A-32 .....
Sweep ACE .....
  
```