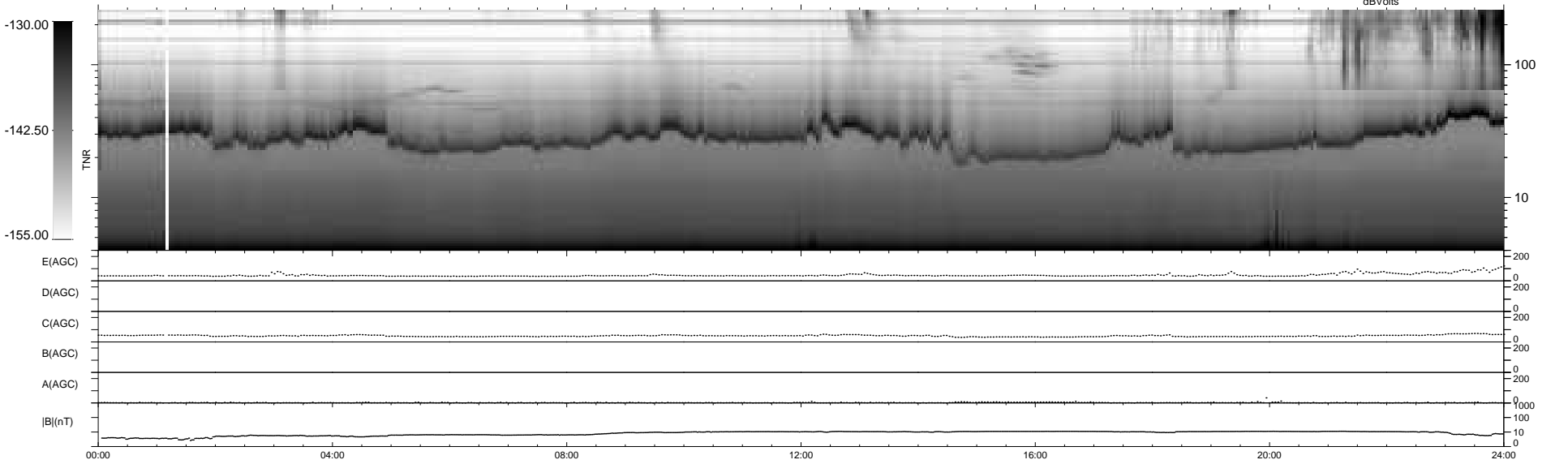
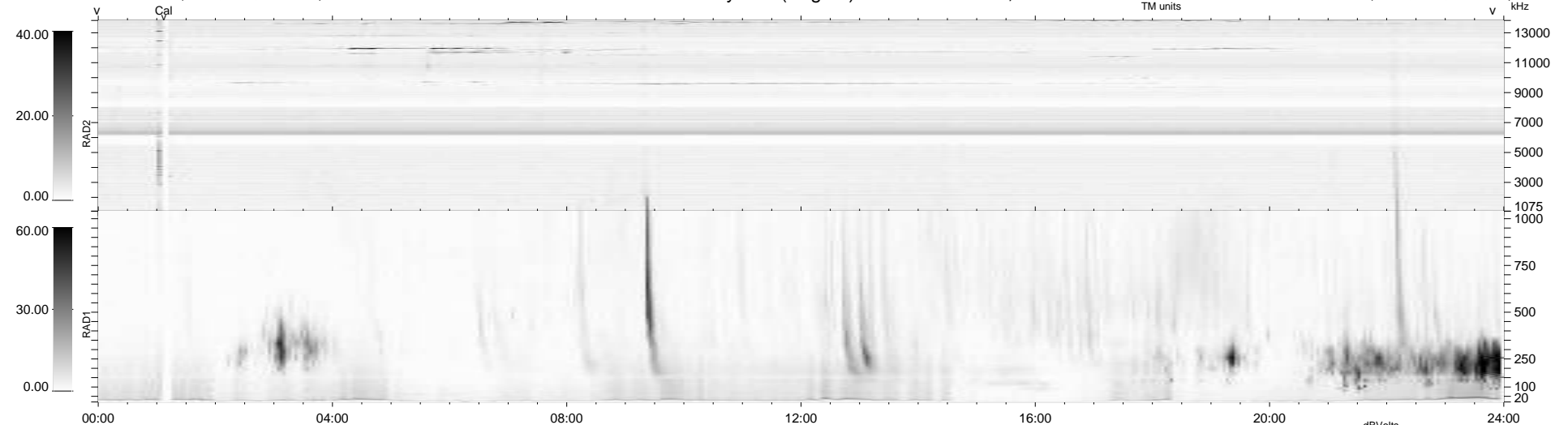


12 bad + 927 good MF/939MF projected (98%) - 0 missing MFs
 Avg interval = 180 secs
 Re = 251.84 (235.40, 88.49, 13.53 GSE)

1.7d VMS-SunOS LZ version = v02
 DAILY Thu Nov 19, 2009
 Re = 252.24 (236.41, 86.78, 14.20 GSE)

WIND/WAVES Summary Plot (Page 1) for 29-OCT-2009, DOY = 302



RAD2
 Antenna Ey
 Mode LIN(1)
 SUM/SEP SEP
 Toggle OFF
 RAD1
 Antenna Ex
 Mode LIS(2,4)
 SUM/SEP SUM
 Toggle OFF
 TNR
 Antenna ExEy
 Mode A-32
 Sweep ACE