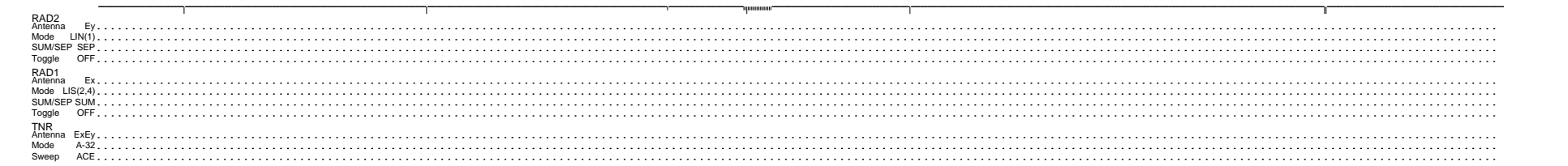
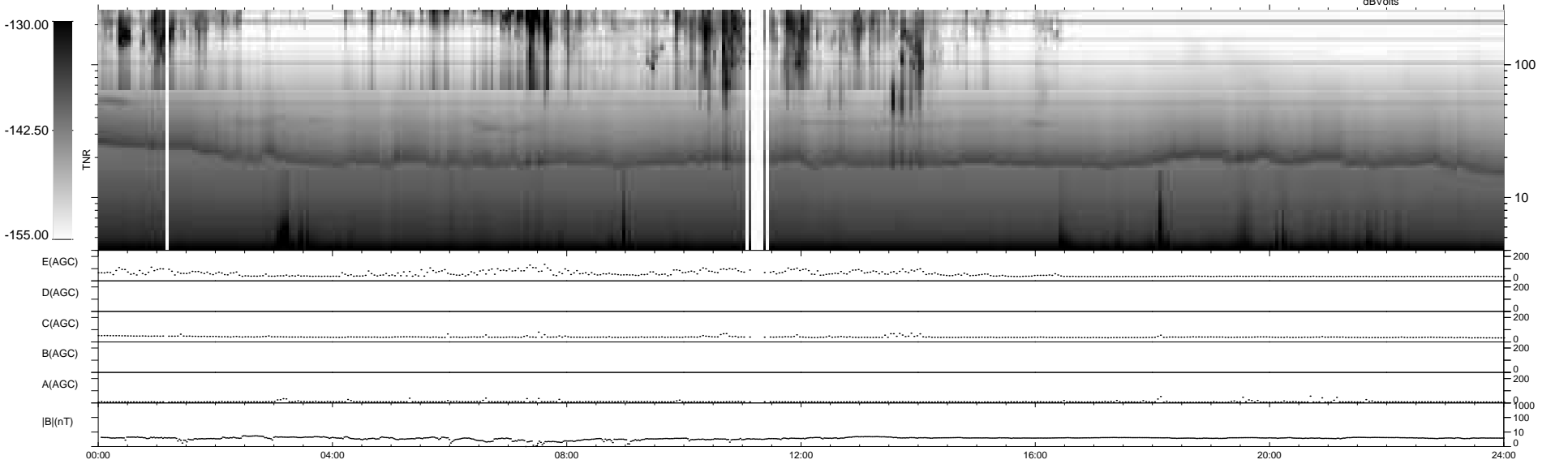
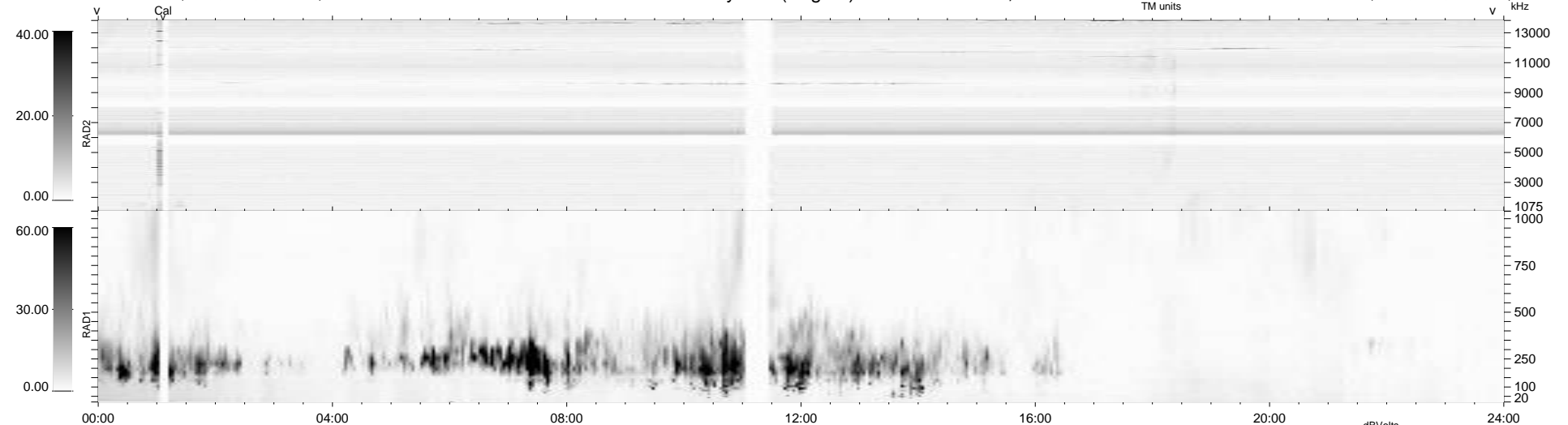


25 bad + 914 good MF/939MF projected (97%) - 0 missing MFs
 Avg interval = 180 secs
 Re = 249.96 (231.36, 94.00, 10.70 GSE)

1.7d VMS-SunOS LZ version = v01
 DAILY Thu Nov 19, 2009
 Re = 250.49 (232.37, 92.84, 11.43 GSE)

WIND/WAVES Summary Plot (Page 1) for 25-OCT-2009, DOY = 298



RAD2
 Antenna Ey
 Mode LIN(1)
 SUM/SEP SEP
 Toggle OFF
 RAD1
 Antenna Ex
 Mode LIS(2,4)
 SUM/SEP SUM
 Toggle OFF
 TNR
 Antenna ExEy
 Mode A-32
 Sweep ACE