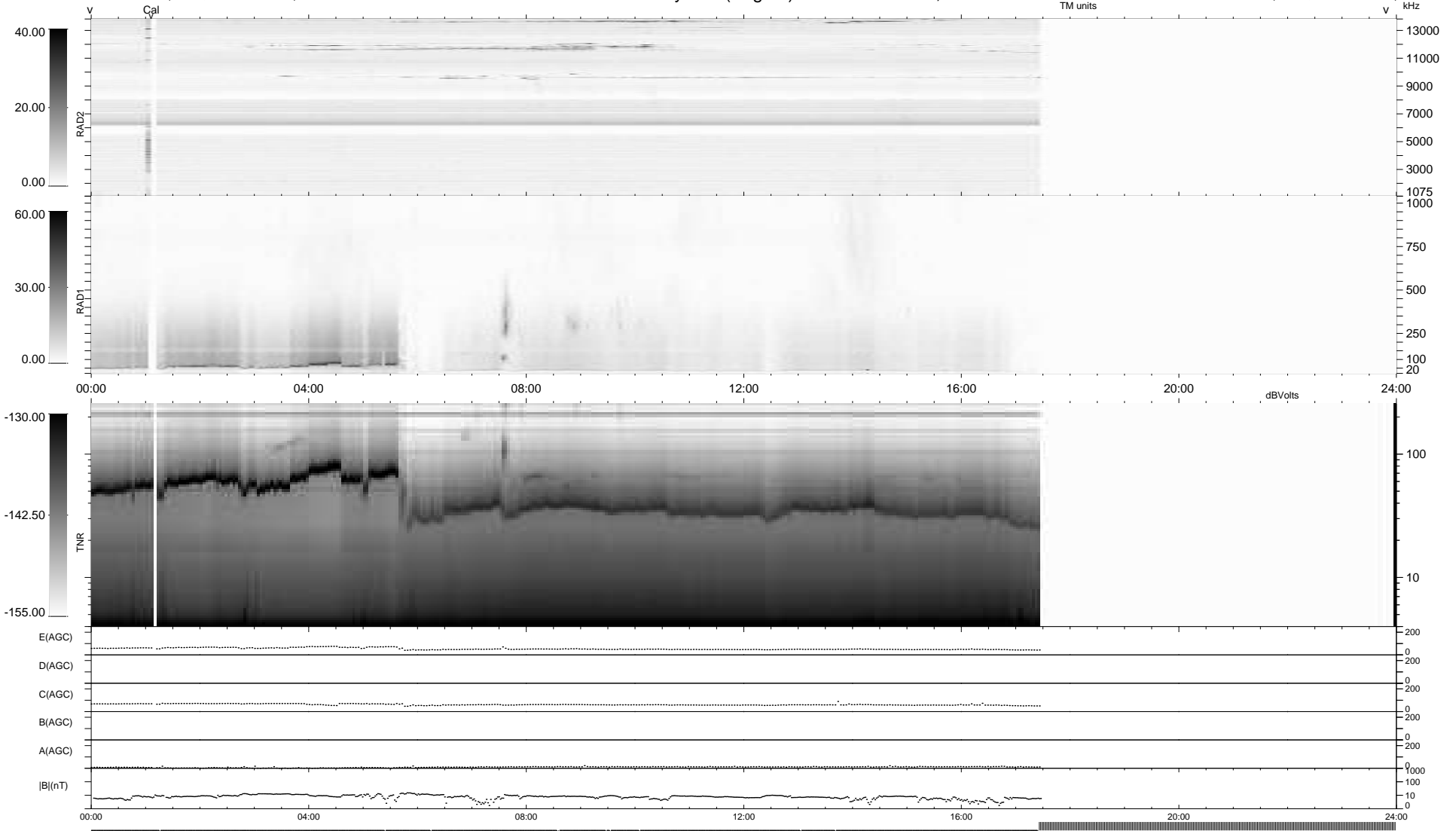


11 bad + 671 good MF/939MF projected (71%) - 257 missing MFs
 Avg interval = 180 secs
 Re = -236.61 (215.89, 96.85, -0.11 GSE)

1.7d VMS-SunOS LZ version = v01
 DAILY Tue Oct 13, 2009
 Re = 237.84 (217.02, 97.33, 0.67 GSE)

WIND/WAVES Summary Plot (Page 1) for 11-OCT-2009, DOY = 284



```

RAD2
Antenna Ey .....
Mode LIN(1) .....
SUM/SEP SEP .....
Toggle OFF .....

RAD1
Antenna Ex .....
Mode LIS(2,4) .....
SUM/SEP SUM .....
Toggle OFF .....

TNR
Antenna ExEy .....
Mode A-32 .....
Sweep ACE .....
  
```