

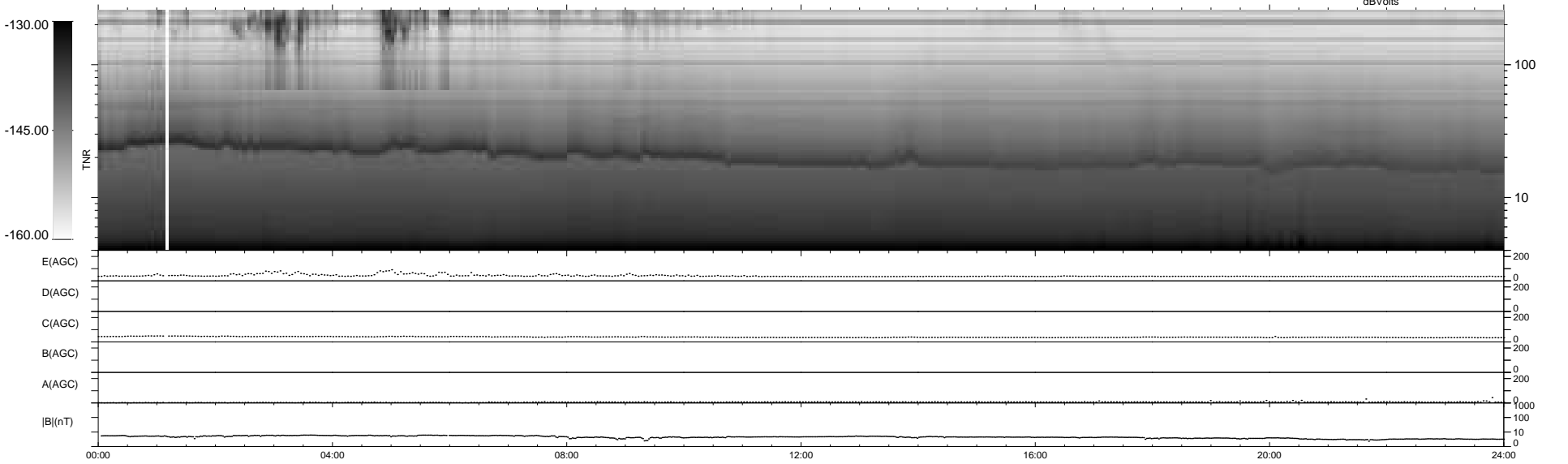
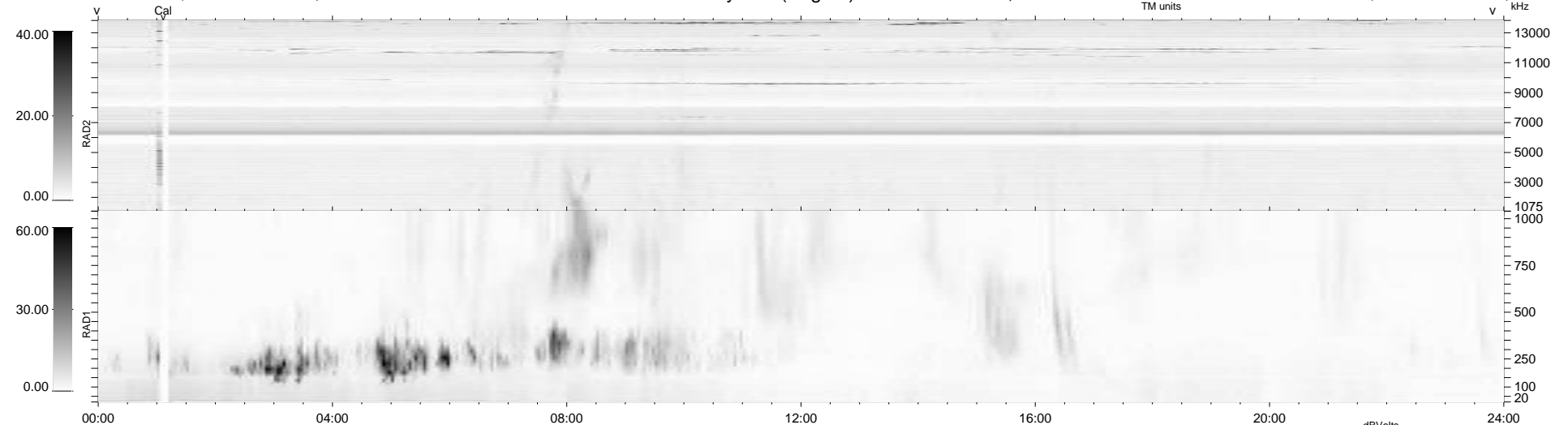
7 bad + 932 good MF/939MF projected (99%) - 0 missing MFs  
 Avg interval = 180 secs  
 Re = 224.66 (207.13, 86.65, -7.93 GSE)

1.7d VMS-SunOS

LZ version = v02

### WIND/WAVES Summary Plot (Page 1) for 01-OCT-2009, DOY = 274

DAILY Mon Oct 5, 2009  
 Re = 225.79 (207.73, 88.17, -7.17 GSE)



```

RAD2
Antenna Ey .....
Mode LIN(1) .....
SUM/SEP SEP .....
Toggle OFF .....

RAD1
Antenna Ex .....
Mode LIS(2,4) .....
SUM/SEP SUM .....
Toggle OFF .....

TNR
Antenna ExEy .....
Mode A-32 .....
Sweep ACE .....
  
```