

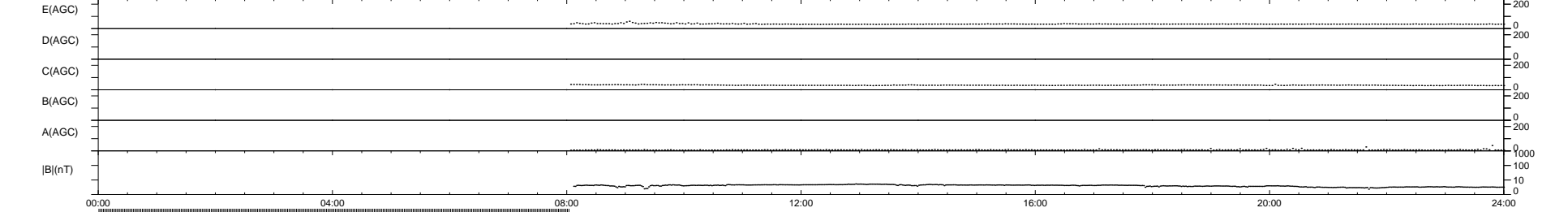
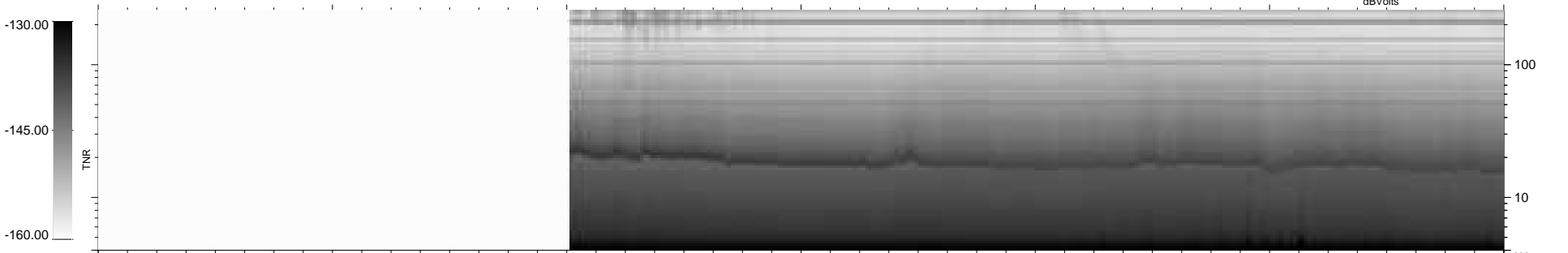
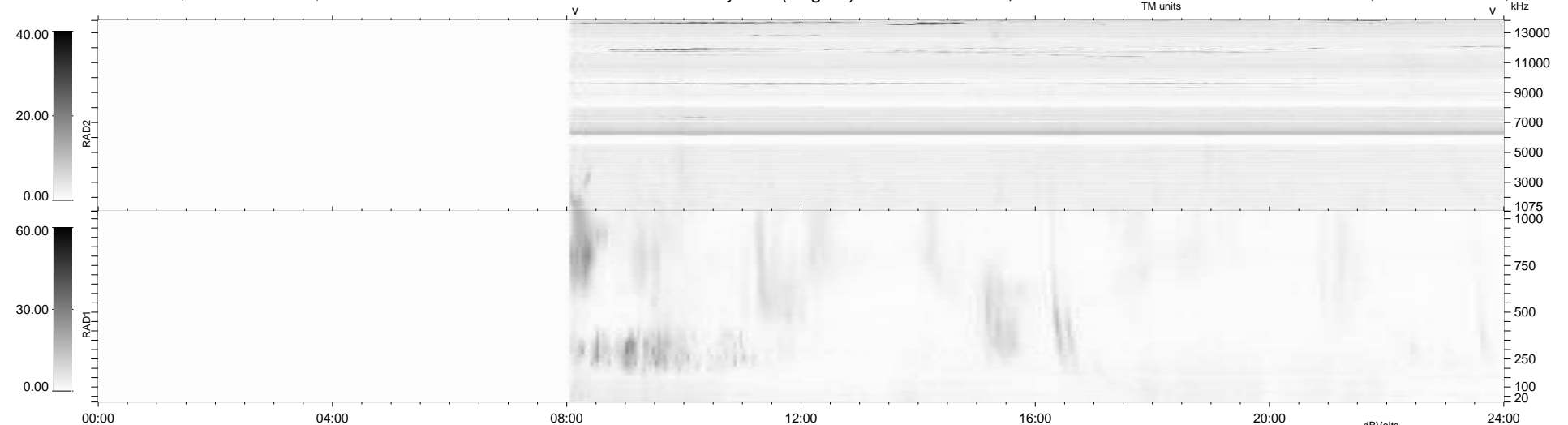
5 bad + 619 good MF/939MF projected (65%) - 315 missing MFs
Avg interval = 180 secs
Re = 225.05 (207.33, 87.19, -7.67 GSE)

1.7d VMS-SunOS

LZ version = v01

WIND/WAVES Summary Plot (Page 1) for 01-OCT-2009, DOY = 274

DAILY Fri Oct 2, 2009
Re = 225.79 (207.73, 88.17, -7.17 GSE)



RAD2 Antenna Mode SUM/SEP Toggle
RAD1 Antenna Mode SUM/SEP Toggle
TNR Antenna Mode Sweep