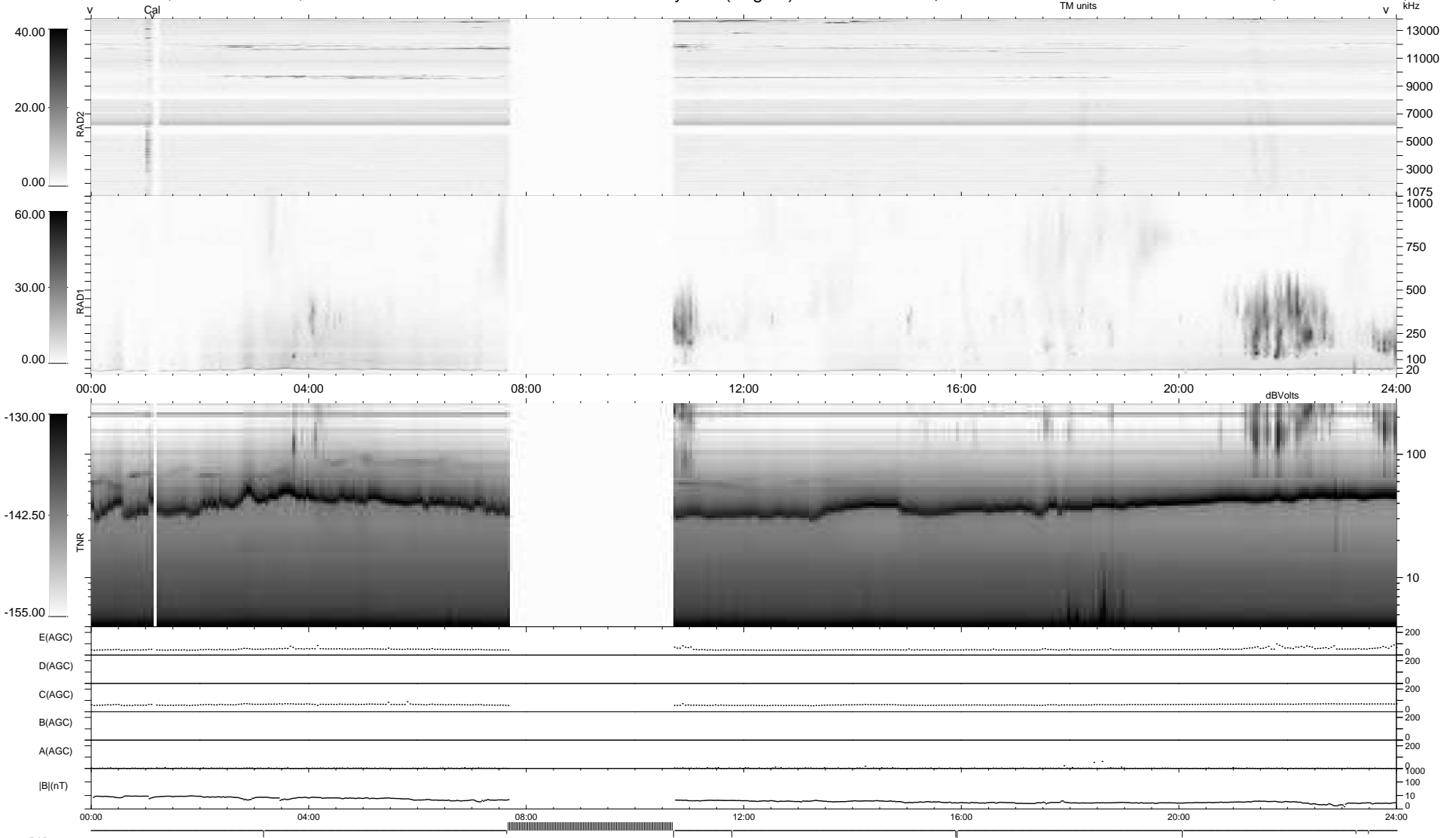


9 bad + 812 good MF/940MF projected (86%) - 119 missing MFs
 Avg interval = 180 secs
 Re = 220.24 (205.23, 79.17, -10.88 GSE)

1.7d VMS-SunOS LZ version = v02
 DAILY Mon Sep 28, 2009
 Re = 221.33 (205.63, 81.23, -10.17 GSE)

WIND/WAVES Summary Plot (Page 1) for 27-SEP-2009, DOY = 270



```

RAD2
Antenna Ey .....
Mode LIN(1) .....
SUM/SEP SEP .....
Toggle OFF .....

RAD1
Antenna Ex .....
Mode LIS(2,4) .....
SUM/SEP SUM .....
Toggle OFF .....

TNR
Antenna ExEy .....
Mode A-32 .....
Sweep ACE .....
  
```