

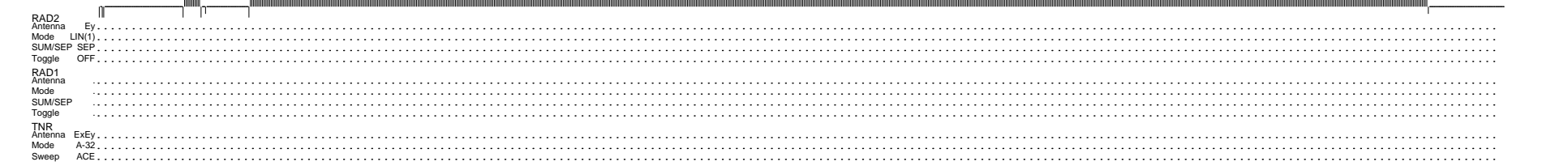
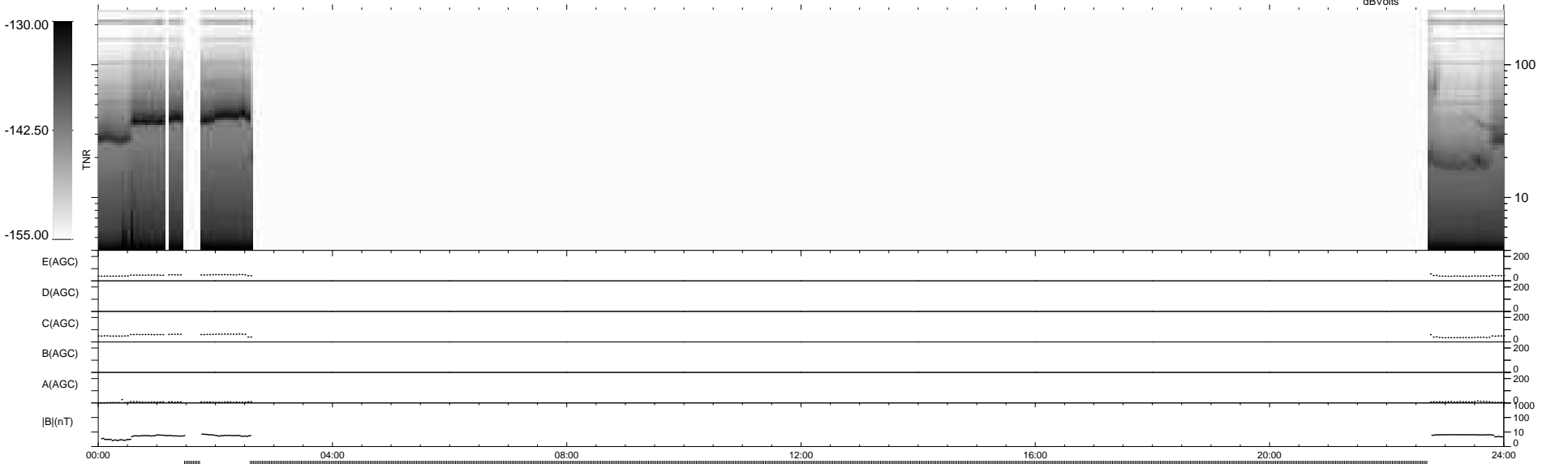
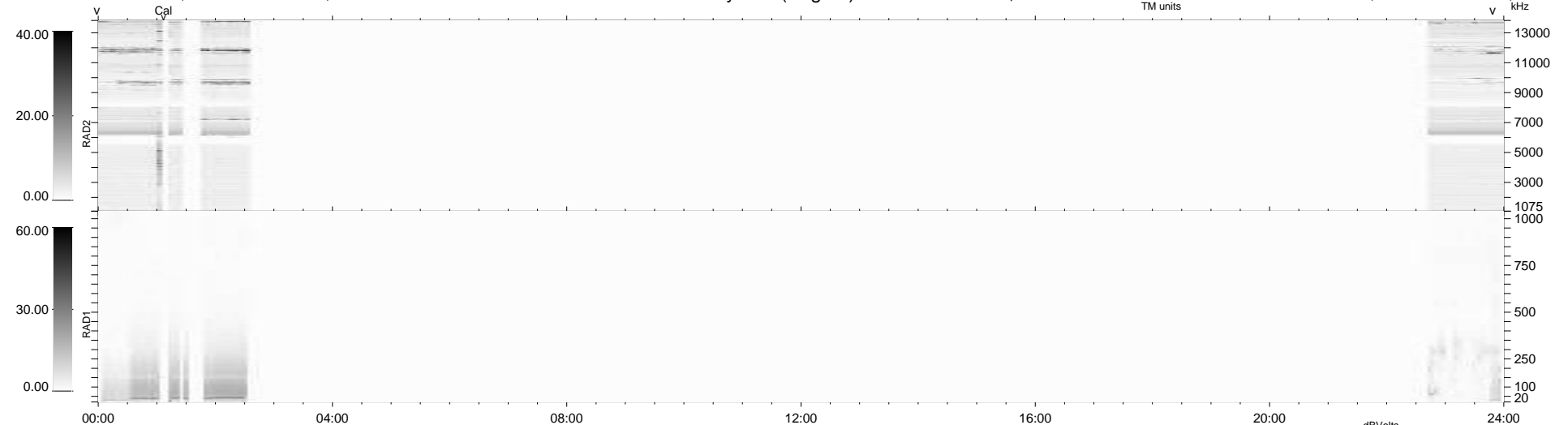
8 bad + 133 good MF/939MF projected (14%) - 798 missing MFs
 Avg interval = 180 secs
 Re = - 201.81 (200.46, -10.76, -20.64 GSE)

1.7d VMS-SunOS

LZ version = v05

WIND/WAVES Summary Plot (Page 1) for 30-AUG-2009, DOY = 242

DAILY Wed Sep 16, 2009
 Re = 201.45 (200.25, -7.19, -20.71 GSE)



RAD2 Antenna Ey
 Mode LIN(1)
 SUM/SEP SEP
 Toggle OFF

RAD1 Antenna
 Mode
 SUM/SEP
 Toggle

TNR Antenna ExEy
 Mode A-32
 Sweep ACE