

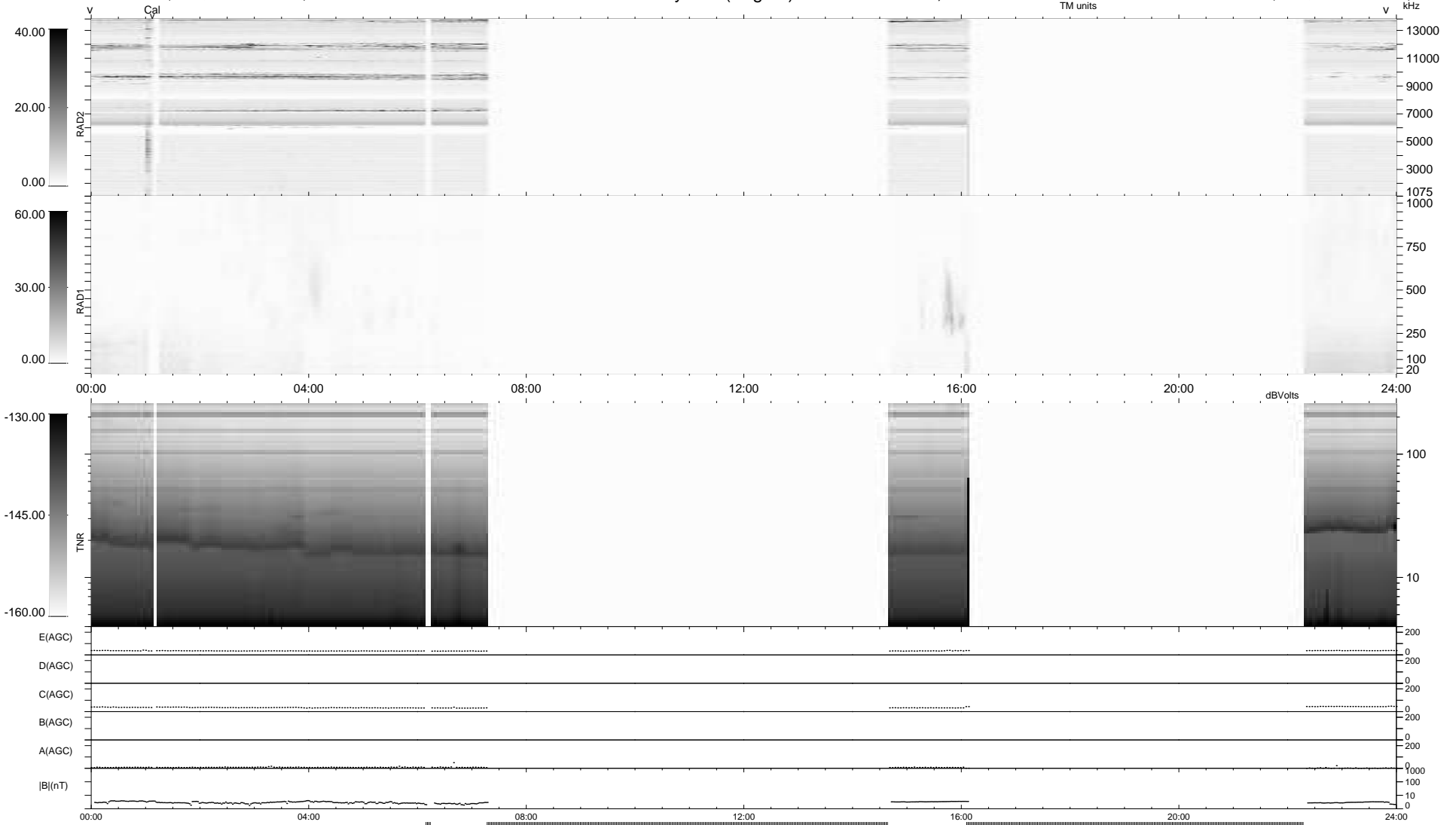
9 bad + 394 good MF/939MF projected (41%) - 536 missing MFs
 Avg interval = 180 secs
 Re = 202.79 (200.96, -17.96, -20.38 GSE)

1.7d VMS-SunOS

LZ version = v03

WIND/WAVES Summary Plot (Page 1) for 28-AUG-2009, DOY = 240

DAILY Wed Sep 16, 2009
 Re = 202.26 (200.70, -14.38, -20.53 GSE)



```

RAD2
Antenna  Ey .....
Mode     LIN(1) .....
SUM/SEP  SEP .....
Toggle   OFF .....

RAD1
Antenna  Ex .....
Mode     LIS(2,4) .....
SUM/SEP  SUM .....
Toggle   OFF .....

TNR
Antenna  ExEy .....
Mode     A-32 .....
Sweep    ACE .....
  
```