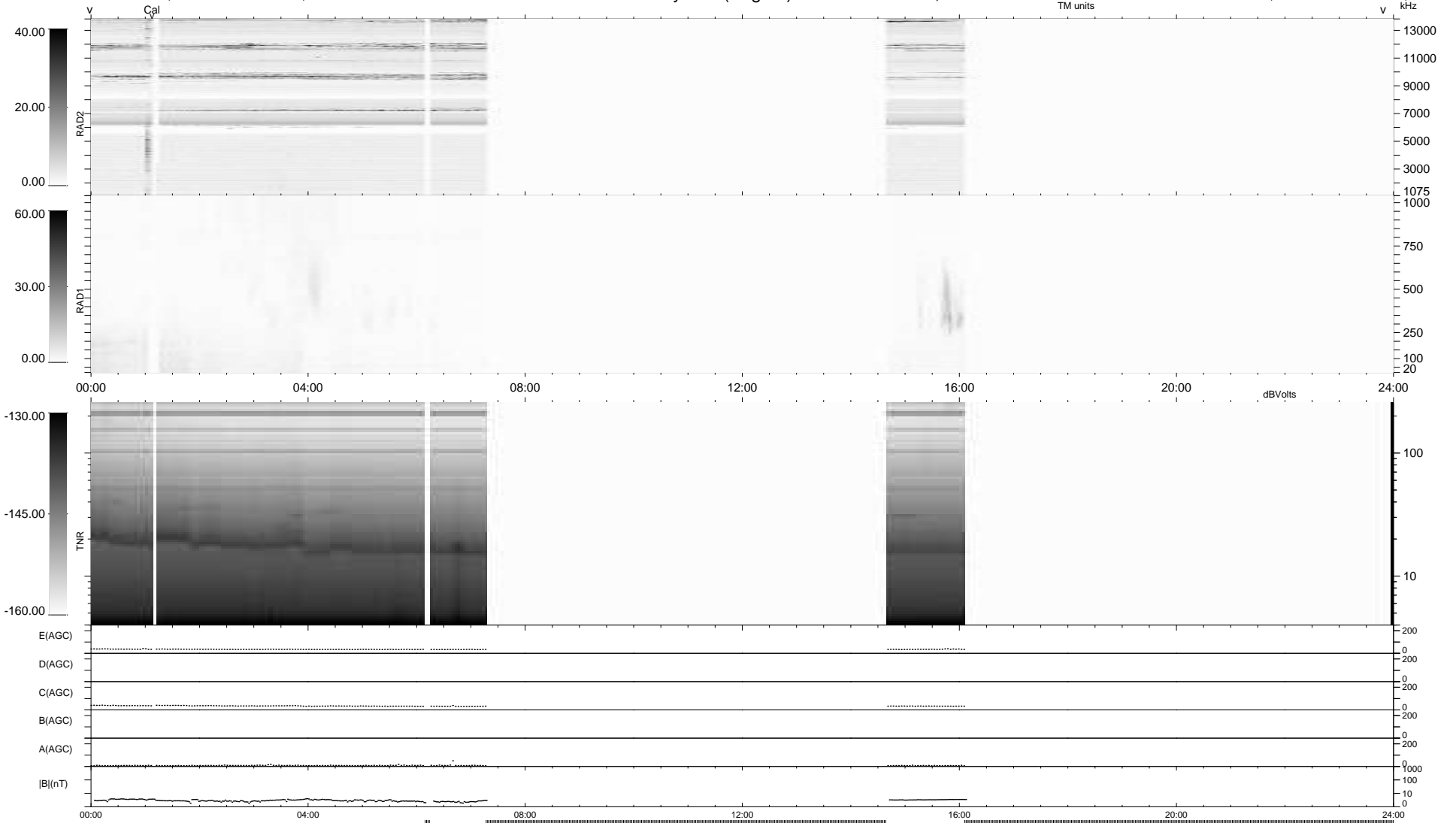


9 bad + 327 good MF/939MF projected (34%) - 603 missing MFs
 Avg interval = 180 secs
 Re = 202.79 (200.96, -17.96, -20.38 GSE)

1.7d VMS-SunOS LZ version = v02
 DAILY Tue Sep 8, 2009
 Re = 202.26 (200.70, -14.38, -20.53 GSE)

WIND/WAVES Summary Plot (Page 1) for 28-AUG-2009, DOY = 240



RAD2
 Antenna Ey
 Mode LIN(1)
 SUM/SEP SEP
 Toggle OFF
 RAD1
 Antenna Ex
 Mode LIS(2,4)
 SUM/SEP SUM
 Toggle OFF
 TNR
 Antenna ExEy
 Mode A-32
 Sweep ACE