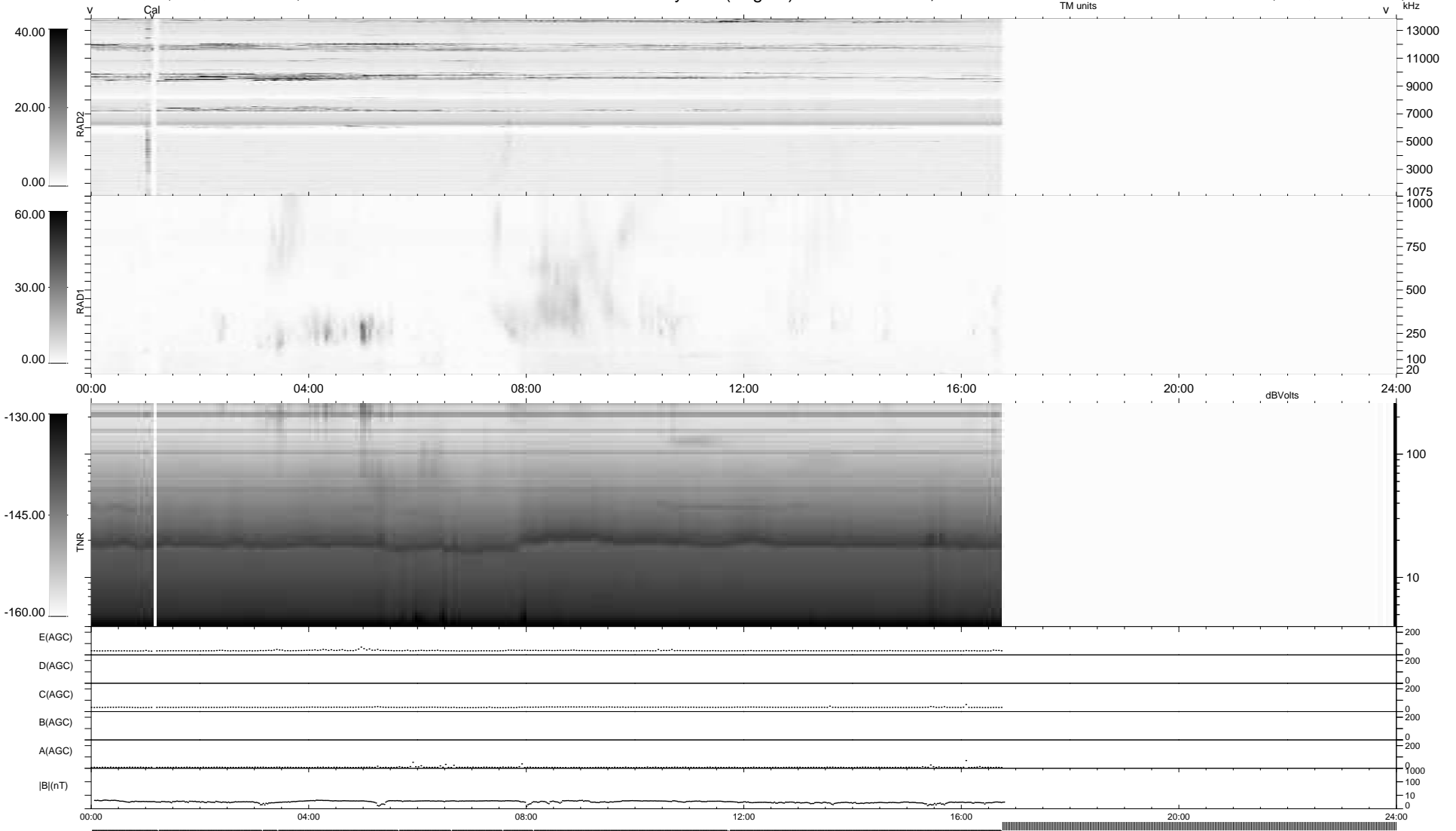


10 bad + 645 good MF/939MF projected (68%) - 284 missing MFs  
 Avg interval = 180 secs  
 Re = -235.44 (215.63, -94.48, -3.71 GSE)

1.7d VMS-SunOS LZ version = v01

### WIND/WAVES Summary Plot (Page 1) for 29-JUL-2009, DOY = 210

DAILY Fri Jul 31, 2009  
 Re = 234.06 (214.58, -93.38, -4.48 GSE)



RAD2 Antenna Ey .....  
 Mode LIN(1) .....  
 SUM/SEP SEP .....  
 Toggle OFF .....  
 RAD1 Antenna Ex .....  
 Mode LIS(2,4) .....  
 SUM/SEP SUM .....  
 Toggle OFF .....  
 TNR Antenna ExEy .....  
 Mode A-32 .....  
 Sweep ACE .....