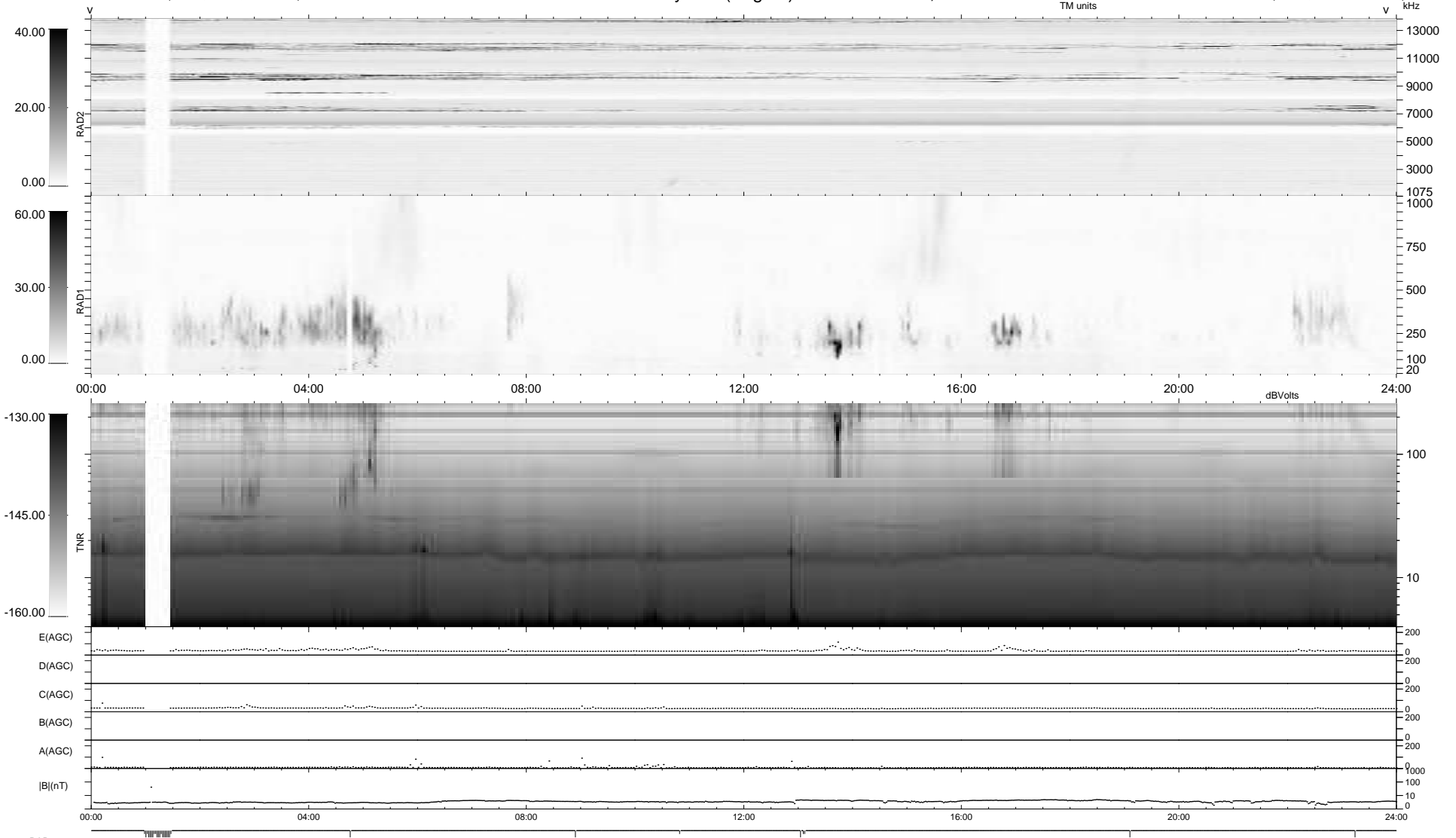


28 bad + 911 good MF/939MF projected (97%) - 0 missing MFs
 Avg interval = 180 secs
 Re = 240.91 (220.04, -98.07, -0.54 GSE)

1.7d VMS-SunOS LZ version = v01
 DAILY Sun Jul 26, 2009
 Re = 239.59 (218.93, -97.31, -1.34 GSE)

WIND/WAVES Summary Plot (Page 1) for 25-JUL-2009, DOY = 206



RAD2
 Antenna Ey
 Mode LIN(1)
 SUM/SEP SEP
 Toggle OFF
 RAD1
 Antenna Ex
 Mode LIS(2,4)
 SUM/SEP SUM
 Toggle OFF
 TNR
 Antenna ExEy
 Mode A-32
 Sweep ACE