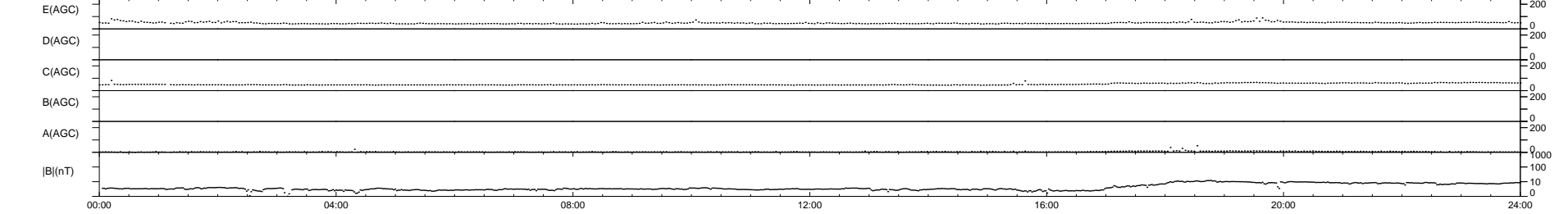
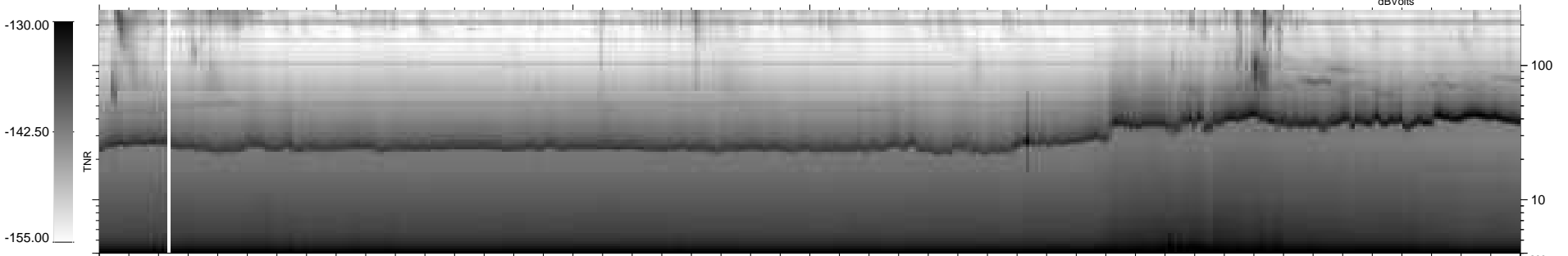
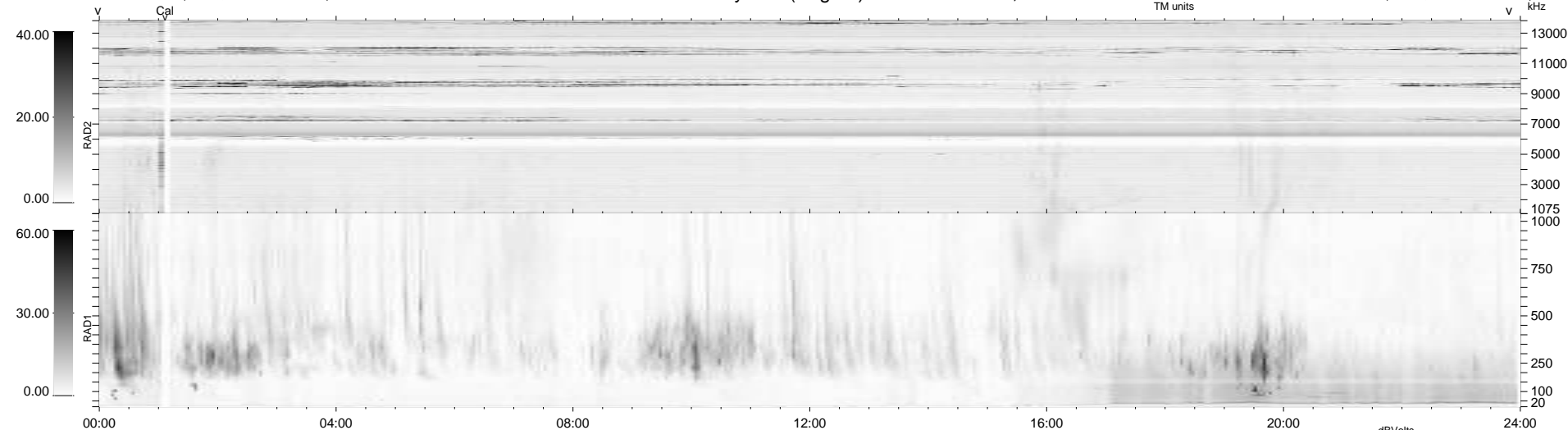


7 bad + 932 good MF/939MF projected (99%) - 0 missing MFs
 Avg interval = 180 secs
 Re = 255.03 (236.97, -93.54, 11.66 GSE)

1.7d VMS-SunOS LZ version = v01
 DAILY Fri Jul 10, 2009
 Re = 254.44 (235.85, -94.83, 10.98 GSE)

WIND/WAVES Summary Plot (Page 1) for 09-JUL-2009, DOY = 190



```

RAD2
Antenna Ey .....
Mode LIN(1) .....
SUM/SEP SEP .....
Toggle OFF .....

RAD1
Antenna Ex .....
Mode LIS(2,4) .....
SUM/SEP SUM .....
Toggle OFF .....

TNR
Antenna ExEy .....
Mode A-32 .....
Sweep ACE .....
  
```