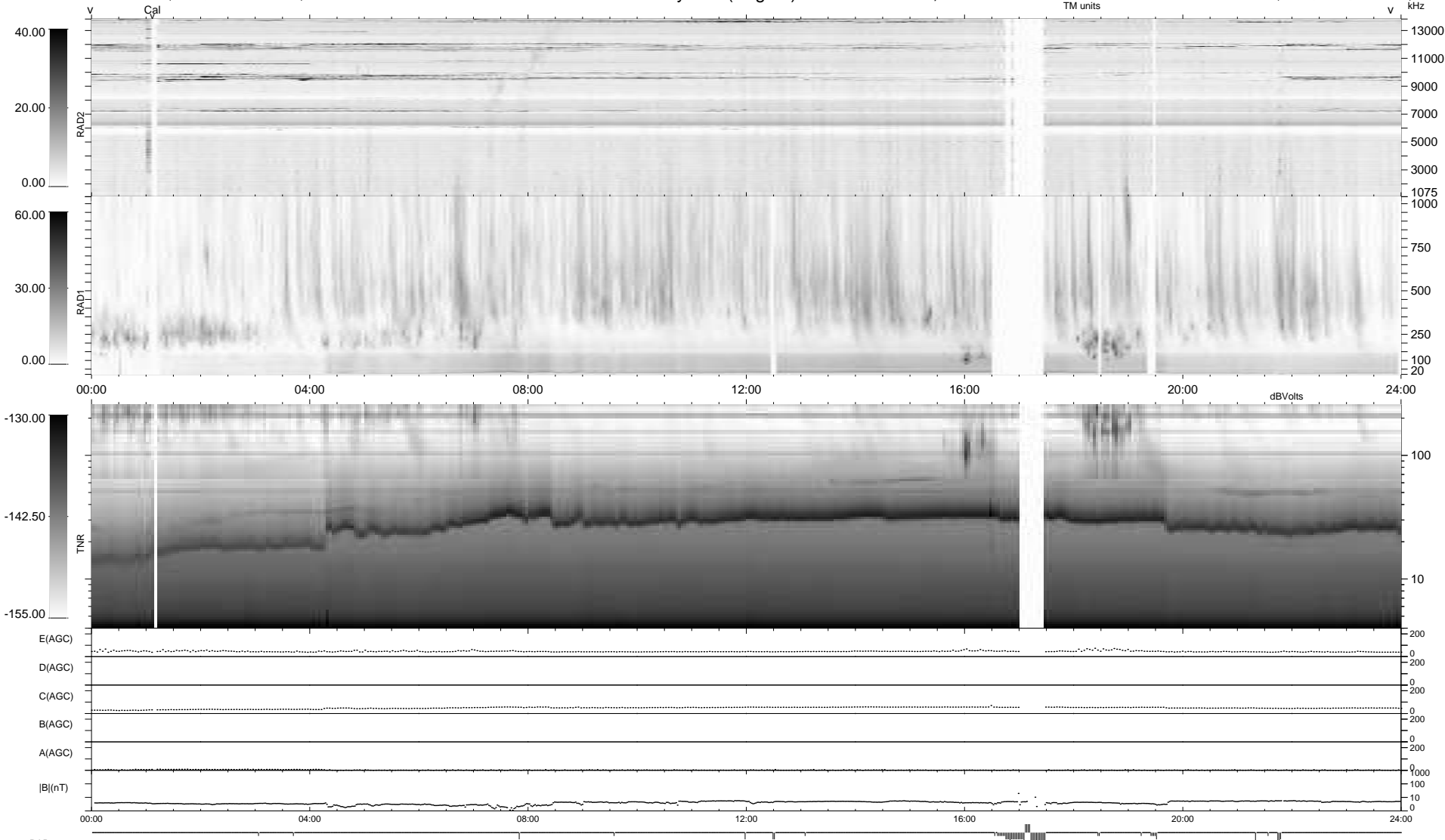


53 bad + 882 good MF/939MF projected (93%) - 4 missing MFs  
 Avg interval = 180 secs  
 Re = 256.20 (239.29, -90.62, 13.00 GSE)

1.7d VMS-SunOS LZ version = v01  
 DAILY Wed Jul 8, 2009  
 Re = 255.62 (238.13, -92.12, 12.34 GSE)

### WIND/WAVES Summary Plot (Page 1) for 07-JUL-2009, DOY = 188



```

RAD2
Antenna Ey .....
Mode LIN(1) .....
SUM/SEP SEP .....
Toggle OFF .....

RAD1
Antenna Ex .....
Mode LIS(2,4) .....
SUM/SEP SUM .....
Toggle OFF .....

TNR
Antenna ExEy .....
Mode A-32 .....
Sweep ACE .....
  
```