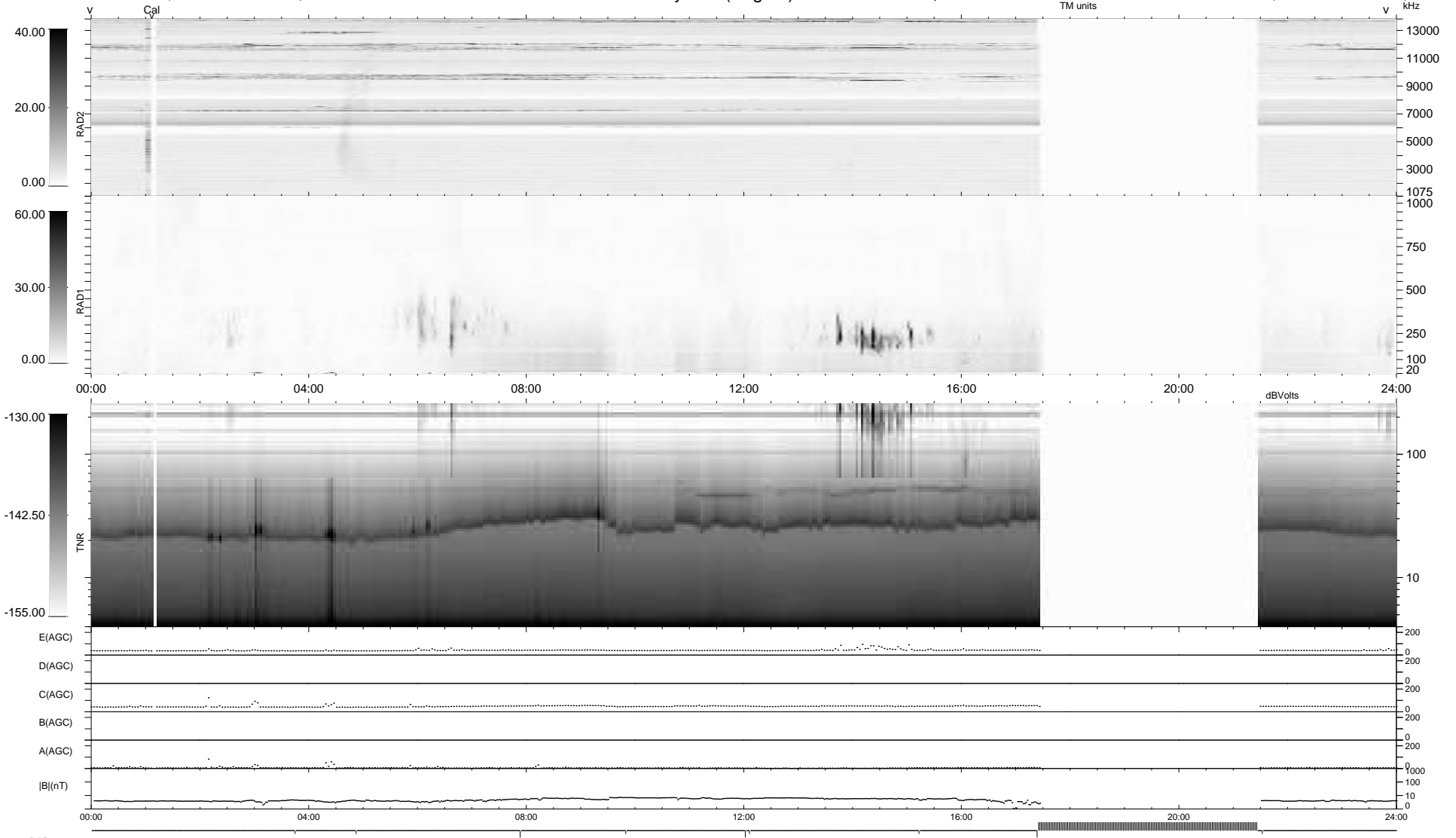


9 bad + 772 good MF/939MF projected (82%) - 158 missing MFs
 Avg interval = 180 secs
 Re = 264.07 (262.56, -12.51, 25.30 GSE)

1.7d VMS-SunOS LZ version = v01
 DAILY Tue Jun 9, 2009
 Re = 264.05 (262.36, -15.97, 25.20 GSE)

WIND/WAVES Summary Plot (Page 1) for 07-JUN-2009, DOY = 158



```

RAD2
Antenna Ey .....
Mode LIN(1) .....
SUM/SEP SEP .....
Toggle OFF .....

RAD1
Antenna Ex .....
Mode LIS(2,4) .....
SUM/SEP SUM .....
Toggle OFF .....

TNR
Antenna ExEy .....
Mode A-32 .....
Sweep ACE .....
  
```