

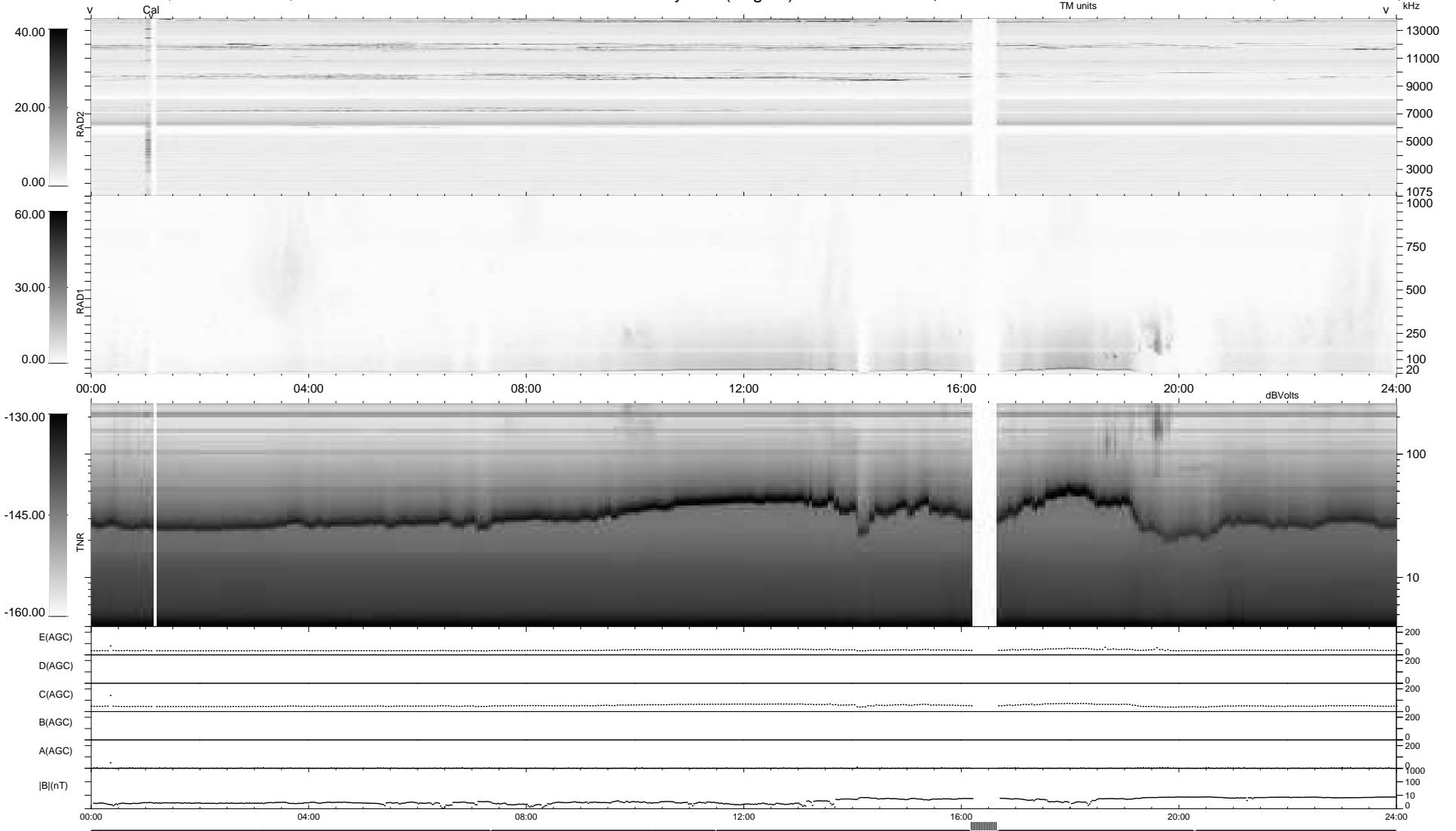
6 bad + 914 good MF/939MF projected (97%) - 19 missing MFs
 Avg interval = 180 secs
 Re = -264.33 (263.10, 1.39, 25.49 GSE)

1.7d VMS-SunOS

LZ version = v01

WIND/WAVES Summary Plot (Page 1) for 03-JUN-2009, DOY = 154

DAILY Thu Jun 4, 2009
 Re = 264.24 (263.00, -2.04, 25.47 GSE)



```

RAD2
Antenna Ey .....
Mode LIN(1) .....
SUM/SEP SEP .....
Toggle OFF .....

RAD1
Antenna Ex .....
Mode LIS(2,4) .....
SUM/SEP SUM .....
Toggle OFF .....

TNR
Antenna ExEy .....
Mode A-32 .....
Sweep ACE .....
  
```