

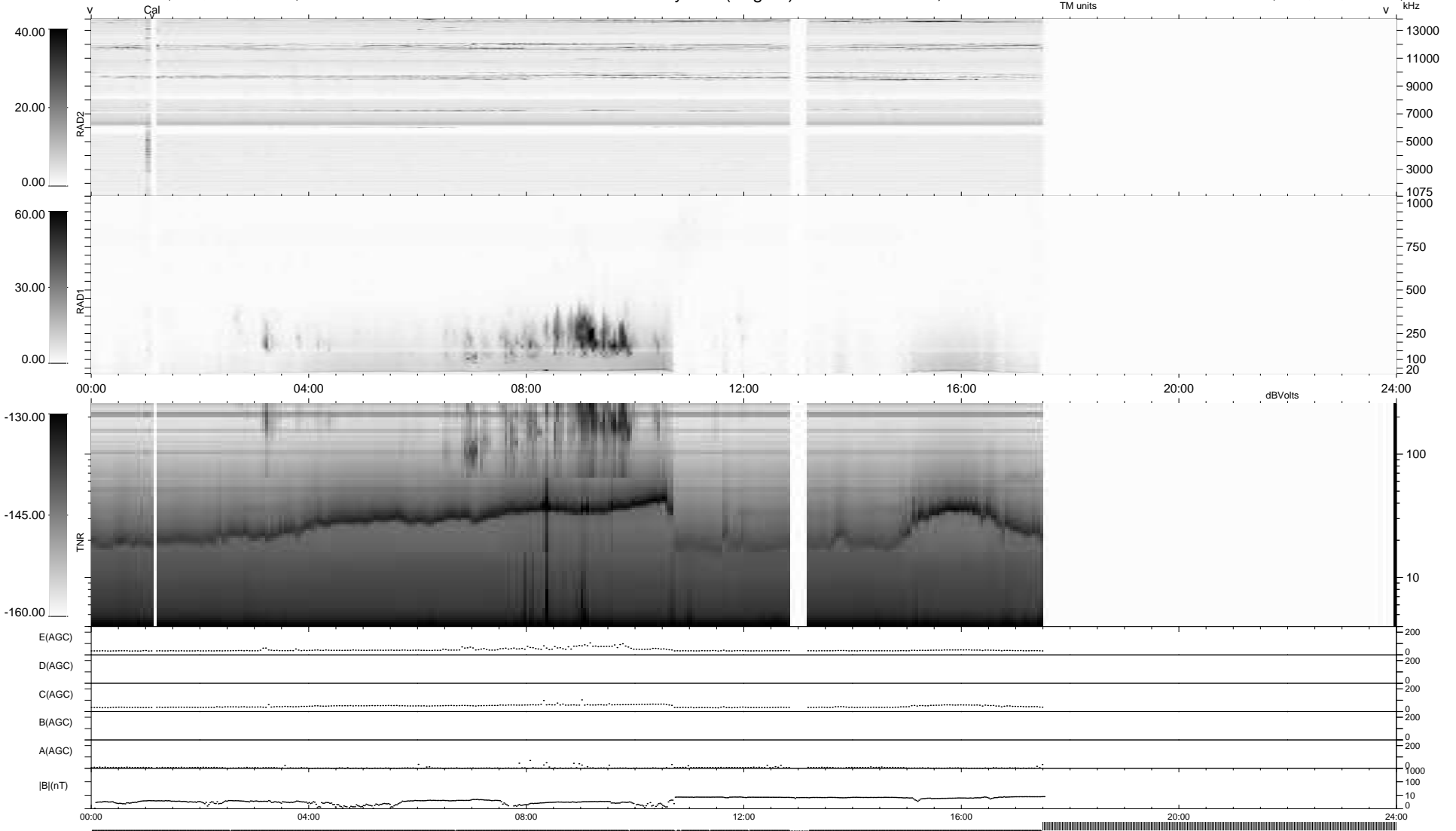
23 bad + 661 good MF/939MF projected (70%) - 255 missing MFs
 Avg interval = 180 secs
 Re = - 260.82 (252.41, 62.26, 20.99 GSE)

1.7d VMS-SunOS

LZ version = v01

WIND/WAVES Summary Plot (Page 1) for 14-MAY-2009, DOY = 134

DAILY Sat May 16, 2009
 Re = 261.25 (253.47, 59.57, 21.44 GSE)



```

RAD2
Antenna Ey .....
Mode LIN(1) .....
SUM/SEP SEP .....
Toggle OFF .....

RAD1
Antenna Ex .....
Mode LIS(2,4) .....
SUM/SEP SUM .....
Toggle OFF .....

TNR
Antenna ExEy .....
Mode A-32 .....
Sweep ACE .....
  
```