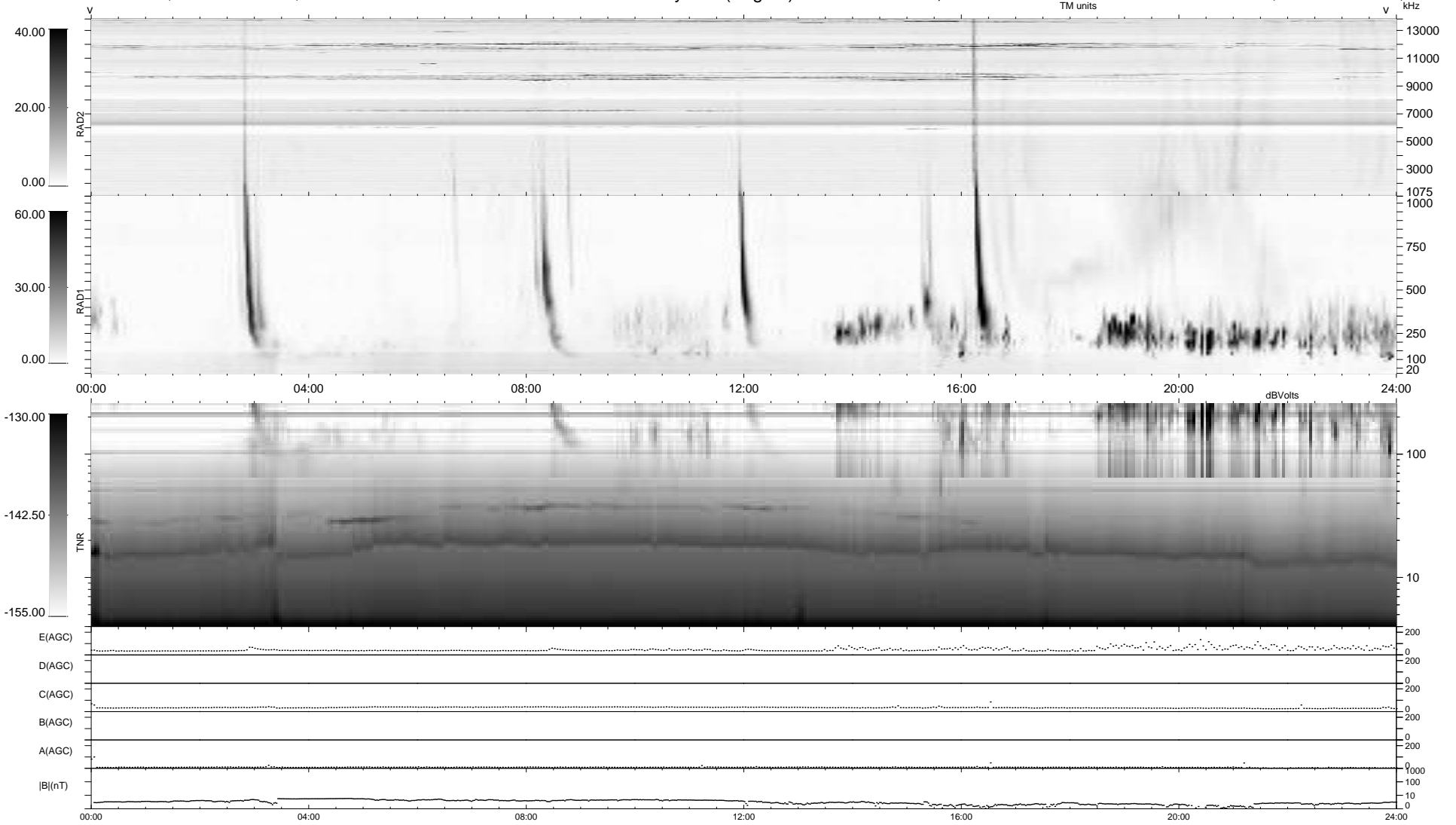


5 bad + 934 good MF/939MF projected (99%) - 0 missing MFs  
 Avg interval = 180 secs  
 Re = 258.74 (246.95, 74.98, 18.48 GSE)

1.7d VMS-SunOS LZ version = v01  
 DAILY Sun May 10, 2009  
 Re = 259.14 (248.03, 72.59, 19.01 GSE)

WIND/WAVES Summary Plot (Page 1) for 09-MAY-2009, DOY = 129



RAD2  
 Antenna Ey .....  
 Mode LIN(1) .....  
 SUM/SEP SEP .....  
 Toggle OFF .....  
 RAD1  
 Antenna Ex .....  
 Mode LIS(2,4) .....  
 SUM/SEP SUM .....  
 Toggle OFF .....  
 TNR  
 Antenna ExEy .....  
 Mode A-32 .....  
 Sweep ACE .....