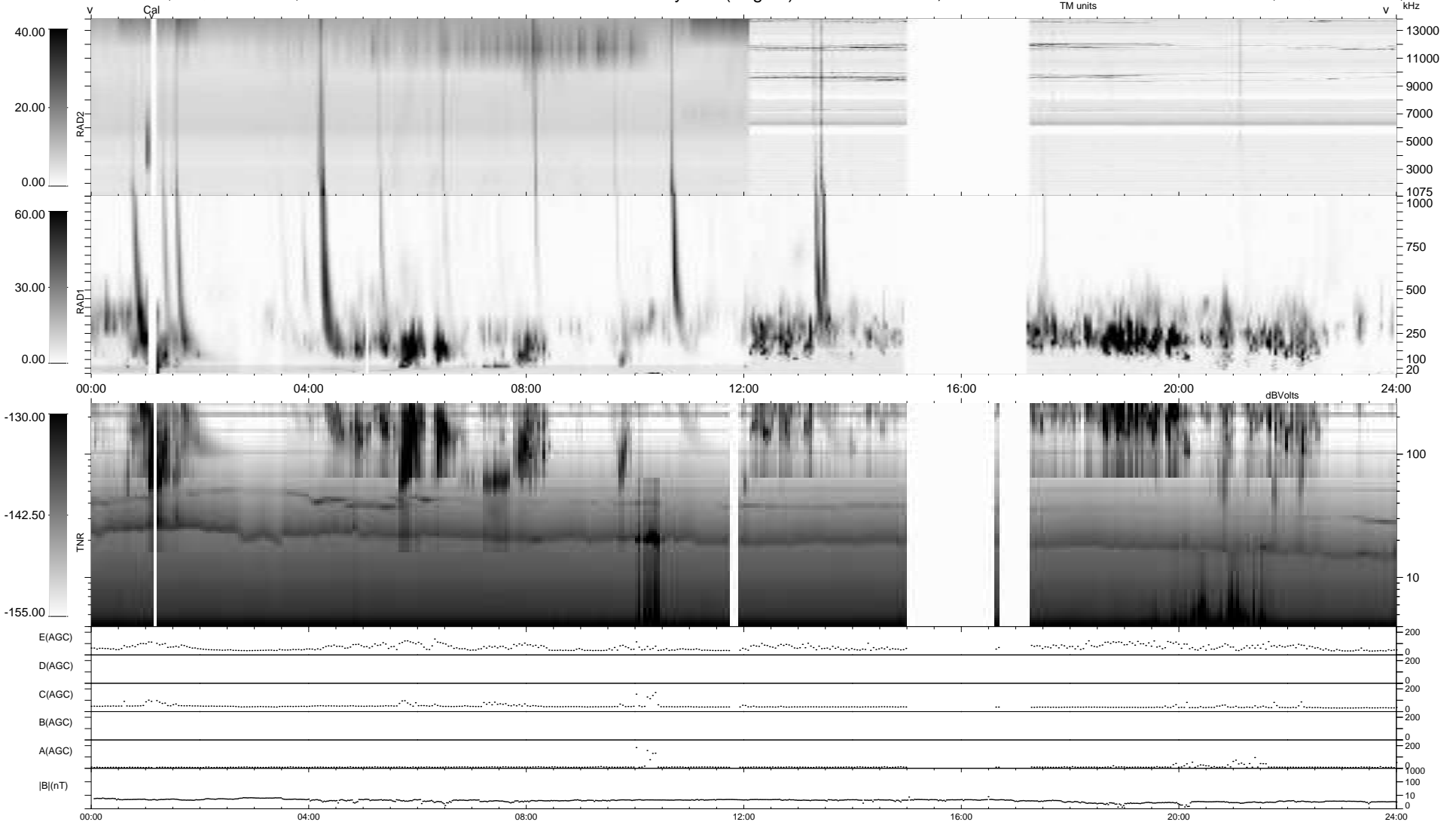


94 bad + 845 good MF/939MF projected (89%) - 0 missing MFs
 Avg interval = 180 secs
 Re = 258.34 (245.86, 77.29, 17.94 GSE)

1.7d VMS-SunOS LZ version = v02
 DAILY Mon May 11, 2009
 Re = 258.74 (246.94, 74.99, 18.48 GSE)

WIND/WAVES Summary Plot (Page 1) for 08-MAY-2009, DOY = 128



```

RAD2
Antenna  Ey ..... LIN(1)
Mode LIS(0,0) ..... SEP
SUM/SEP SUM .....
Toggle OFF .....

RAD1
Antenna  Ex ..... US(2,4)
Mode LIS(0,0) .....
SUM/SEP SUM .....
Toggle OFF .....

TNR
Antenna  ExEy .....
Mode A-32 .....
Sweep ACE .....
  
```