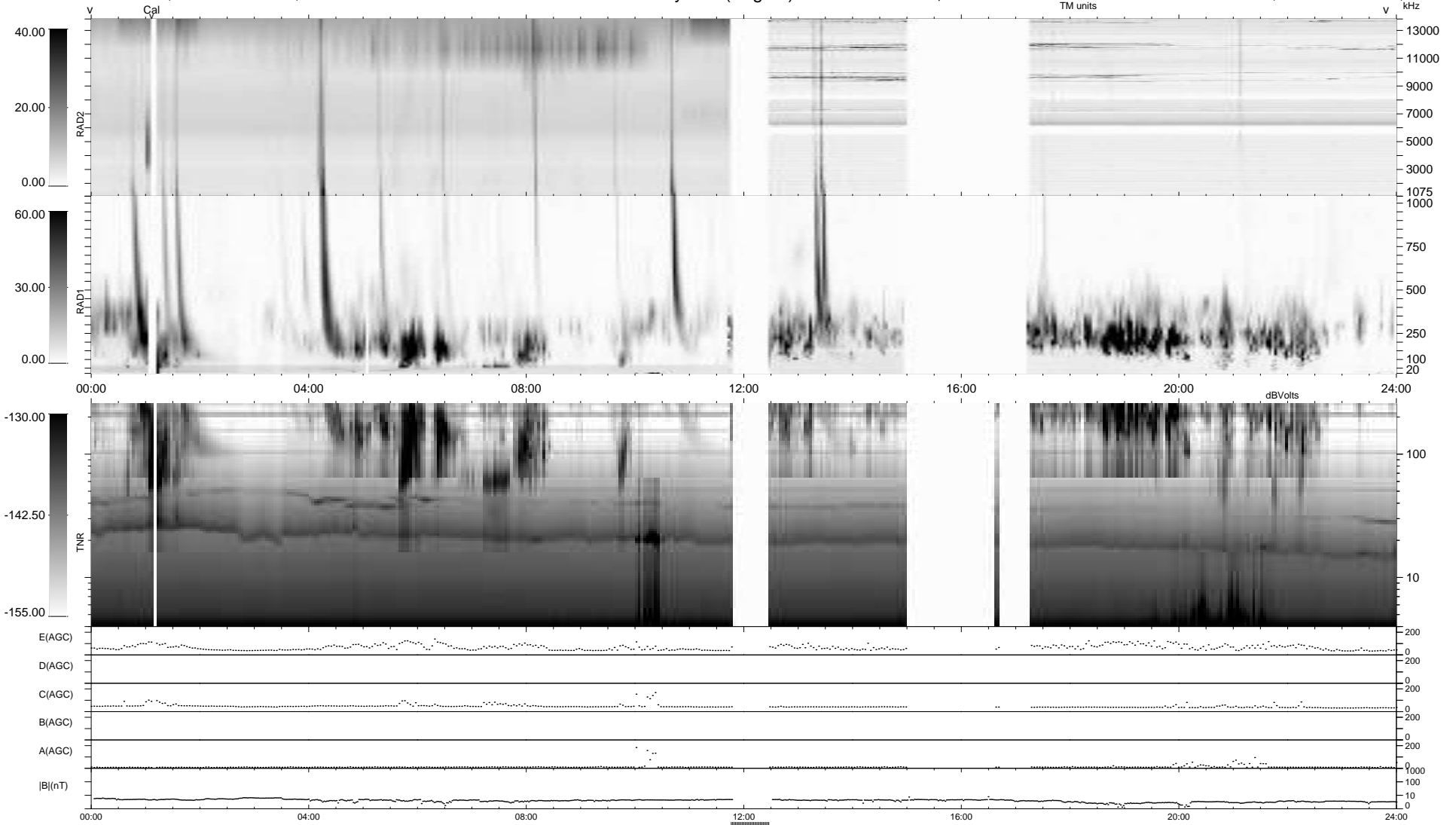


95 bad + 816 good MF/939MF projected (86%) - 28 missing MFs
 Avg interval = 180 secs
 Re = 258.34 (245.86, 77.29, 17.94 GSE)

1.7d VMS-SunOS LZ version = v01
 DAILY Sat May 9, 2009
 Re = 258.74 (246.94, 74.99, 18.48 GSE)

WIND/WAVES Summary Plot (Page 1) for 08-MAY-2009, DOY = 128



RAD2
 Antenna Ey
 Mode LIS(0,0)
 SUM/SEP SUM
 Toggle OFF

RAD1
 Antenna Ex
 Mode LIS(0,0) LIS(2,4)
 SUM/SEP SUM
 Toggle OFF

TNR
 Antenna ExEy
 Mode A-32
 Sweep ACE