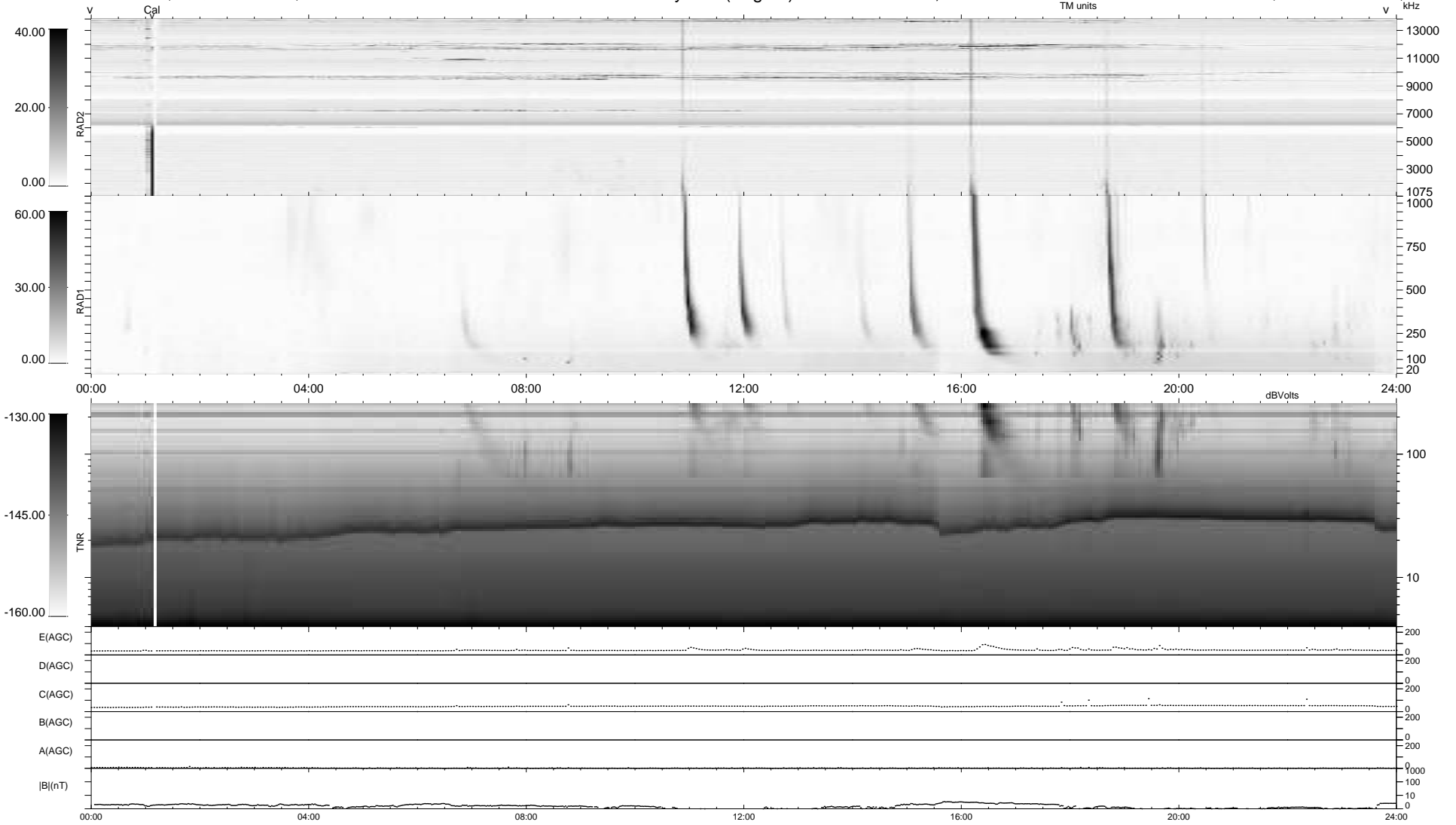


9 bad + 930 good MF/939MF projected (99%) - 0 missing MFs  
 Avg interval = 180 secs  
 Re = 253.39 (235.04, 93.96, 11.70 GSE)

1.7d VMS-SunOS LZ version = v02  
 DAILY Thu Apr 30, 2009  
 Re = 254.09 (236.17, 92.90, 12.38 GSE)

### WIND/WAVES Summary Plot (Page 1) for 28-APR-2009, DOY = 118



```

RAD2
Antenna Ey .....
Mode LIN(1) .....
SUM/SEP SEP .....
Toggle OFF .....

RAD1
Antenna Ex .....
Mode LIS(2,4) .....
SUM/SEP SUM .....
Toggle OFF .....

TNR
Antenna ExEy .....
Mode A-32 .....
Sweep ACE .....
  
```