

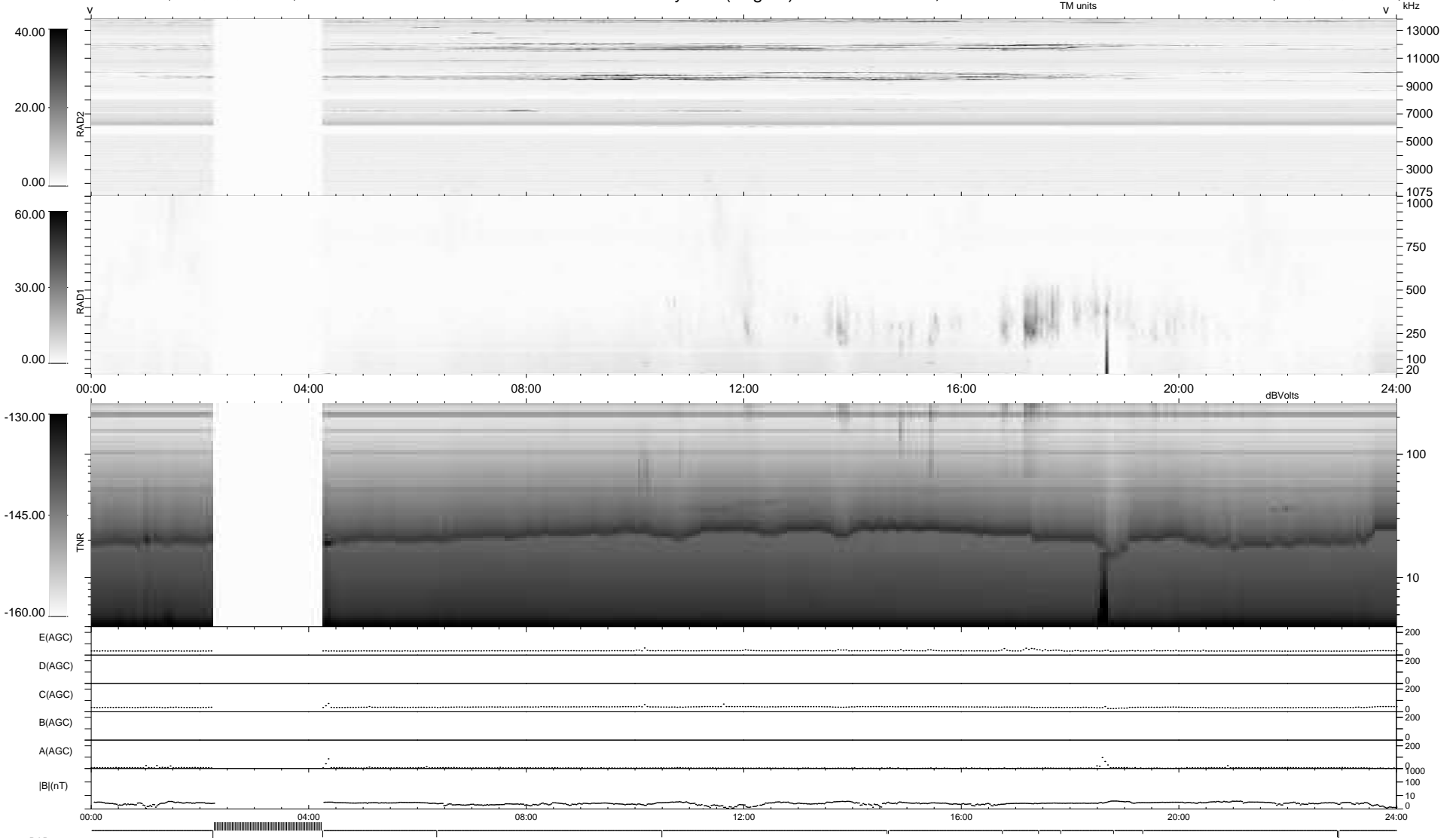
13 bad + 848 good MF/939MF projected (90%) - 78 missing MFs
 Avg interval = 180 secs
 Re = 229.26 (209.92, 92.05, -4.64 GSE)

1.7d VMS-SunOS

LZ version = v01

WIND/WAVES Summary Plot (Page 1) for 07-APR-2009, DOY = 97

DAILY Wed Apr 8, 2009
 Re = 230.47 (210.76, 93.18, -3.87 GSE)



```

RAD2
Antenna Ey .....
Mode LIN(1) .....
SUM/SEP SEP .....
Toggle OFF .....

RAD1
Antenna Ex .....
Mode LIS(2,4) .....
SUM/SEP SUM .....
Toggle OFF .....

TNR
Antenna ExEy .....
Mode A-32 .....
Sweep ACE .....
  
```