

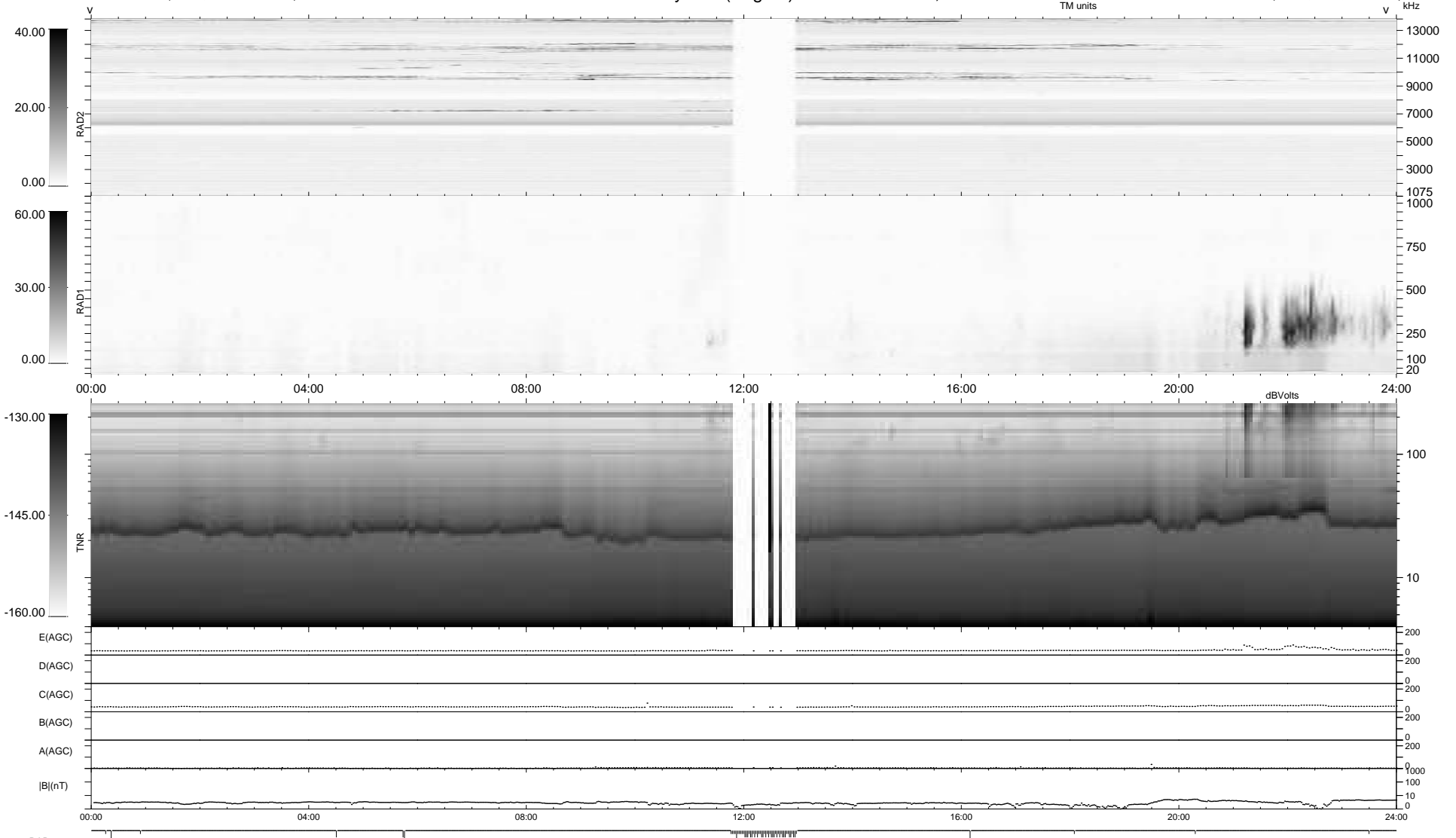
58 bad + 881 good MF/939MF projected (93%) - 0 missing MFs
 Avg interval = 180 secs
 Re = 221.89 (205.90, 82.20, -9.12 GSE)

1.7d VMS-SunOS

LZ version = v02

WIND/WAVES Summary Plot (Page 1) for 01-APR-2009, DOY = 91

DAILY Wed Apr 29, 2009
 Re = 223.14 (206.47, 84.20, -8.40 GSE)



```

RAD2
Antenna  Ey .....
Mode     LIN(1) .....
SUM/SEP  SEP .....
Toggle   OFF .....

RAD1
Antenna  Ex .....
Mode     LIS(2,4) .....
SUM/SEP  SUM .....
Toggle   OFF .....

TNR
Antenna  ExEy .....
Mode     A-32 .....
Sweep    ACE .....
  
```