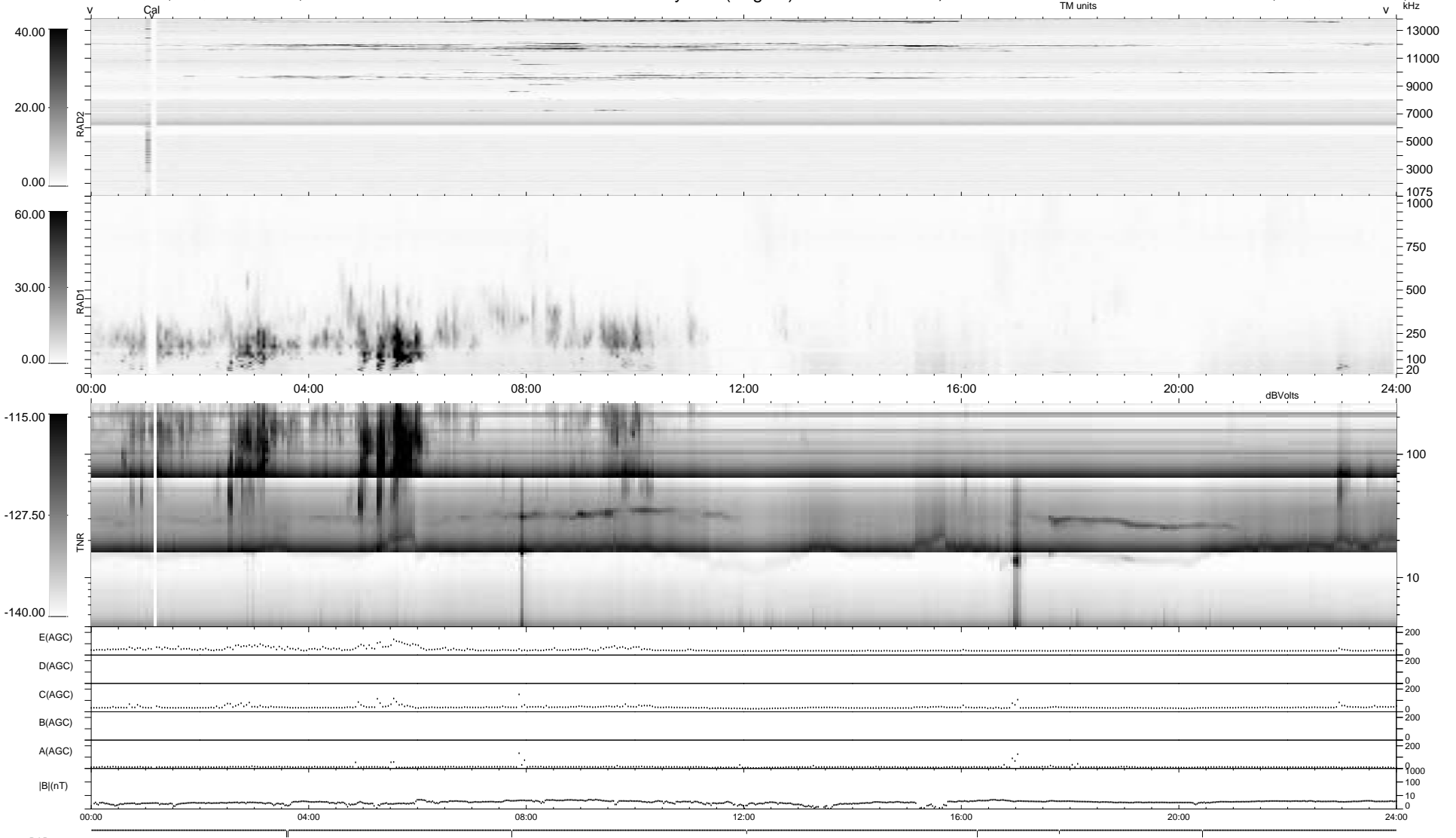


7 bad + 932 good MF/939MF projected (99%) - 0 missing MFs
 Avg interval = 180 secs
 Re = -201.06 (197.50, 32.65, -18.78 GSE)

1.7d VMS-SunOS LZ version = v01
 DAILY Mon Mar 16, 2009
 Re = 201.94 (197.84, 36.00, -18.42 GSE)

WIND/WAVES Summary Plot (Page 1) for 15-MAR-2009, DOY = 74



```

RAD2
Antenna Ey .....
Mode LIN(1) .....
SUM/SEP SEP .....
Toggle OFF .....

RAD1
Antenna Ex .....
Mode LIS(2,4) .....
SUM/SEP SUM .....
Toggle OFF .....

TNR
Antenna ExEy .....
Mode A-32 .....
Sweep ACE .....
  
```