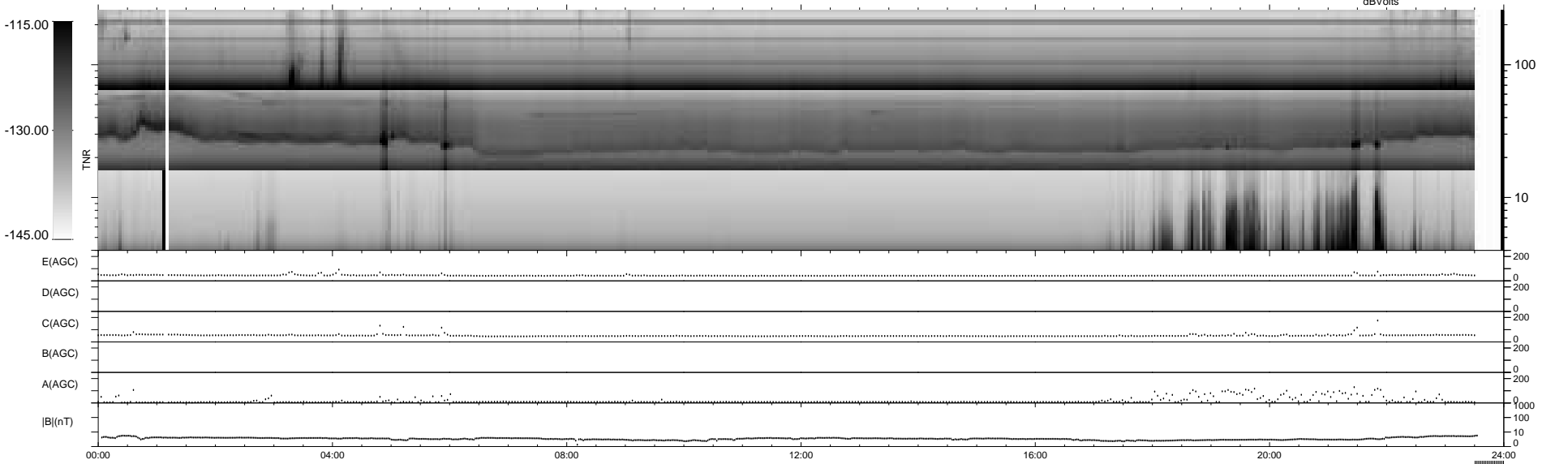
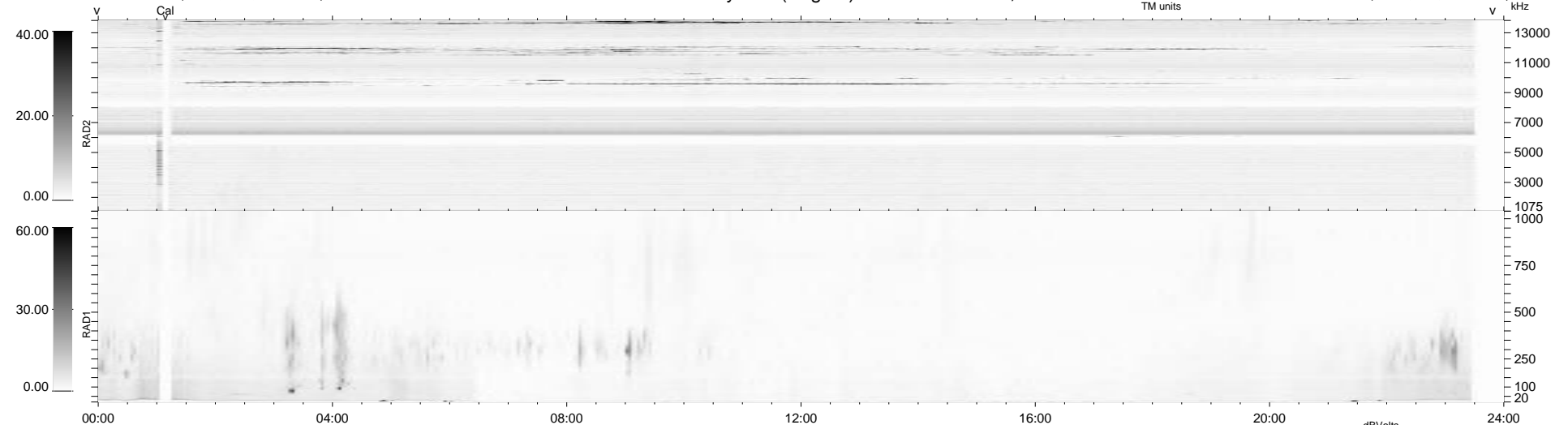


12 bad + 907 good MF/939MF projected (96%) - 20 missing MFs  
 Avg interval = 180 secs  
 Re = 197.68 (196.62, -2.84, -20.32 GSE)

1.7d VMS-SunOS LZ version = v01  
 DAILY Fri Mar 6, 2009  
 Re = 197.56 (196.51, 0.84, -20.33 GSE)

### WIND/WAVES Summary Plot (Page 1) for 05-MAR-2009, DOY = 64



```

RAD2
Antenna Ey
Mode LIN(1)
SUM/SEP SEP
Toggle OFF

RAD1
Antenna Ex
Mode LIS(2/4)
SUM/SEP SUM
Toggle OFF

TNR
Antenna ExEy
Mode A-32
Sweep ACE
  
```