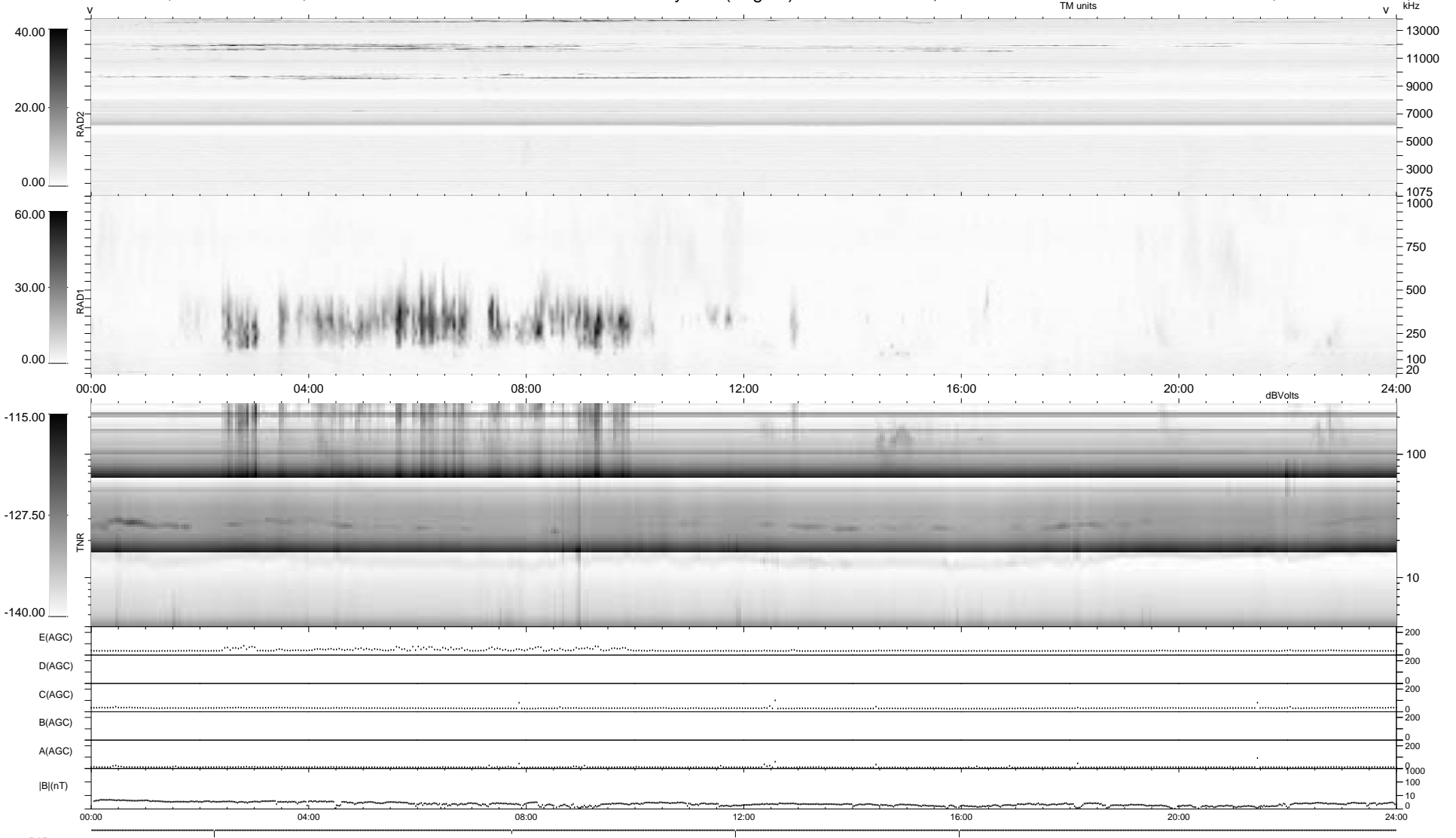


4 bad + 935 good MF/939MF projected (99%) - 0 missing MFs  
 Avg interval = 180 secs  
 Re = 199.49 (197.33, -21.66, -19.77 GSE)

1.7d VMS-SunOS LZ version = v01  
 DAILY Sun Mar 1, 2009  
 Re = 198.99 (197.18, -17.91, -19.94 GSE)

### WIND/WAVES Summary Plot (Page 1) for 28-FEB-2009, DOY = 59



```

RAD2
Antenna Ey .....
Mode LIN(1) .....
SUM/SEP SEP .....
Toggle OFF .....
RAD1
Antenna Ex .....
Mode LIS(2,4) .....
SUM/SEP SUM .....
Toggle OFF .....
TNR
Antenna ExEy .....
Mode A-32 .....
Sweep ACE .....
  
```