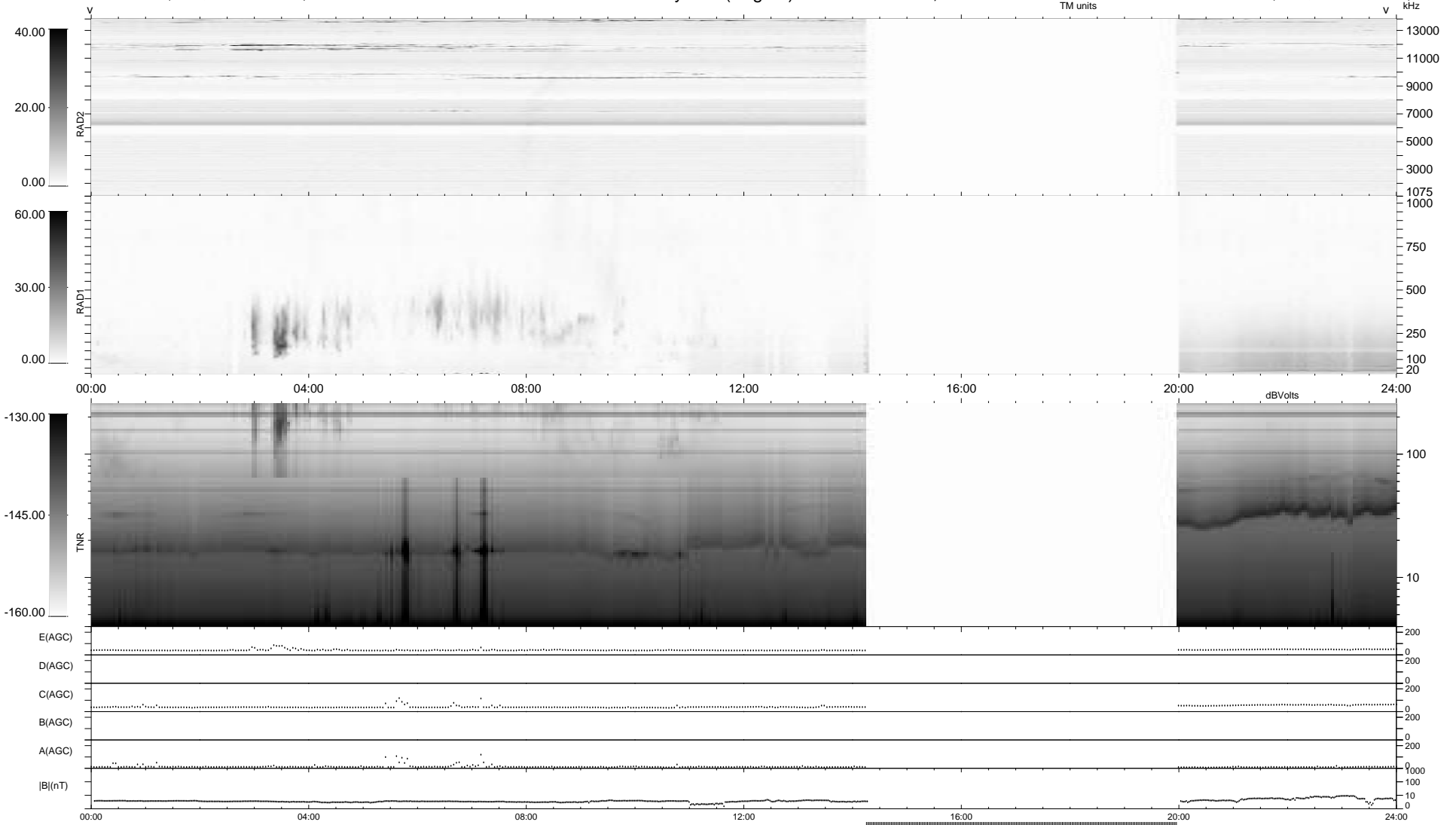


7 bad + 708 good MF/939MF projected (75%) - 224 missing MFs
 Avg interval = 180 secs
 Re = 200.66 (197.59, -29.14, -19.32 GSE)

1.7d VMS-SunOS LZ version = v02
 DAILY Tue Mar 3, 2009
 Re = 200.06 (197.47, -25.44, -19.56 GSE)

WIND/WAVES Summary Plot (Page 1) for 26-FEB-2009, DOY = 57



```

RAD2
Antenna Ey .....
Mode LIN(1) .....
SUM/SEP SEP .....
Toggle OFF .....

RAD1
Antenna Ex .....
Mode LIS(2/4) .....
SUM/SEP SUM .....
Toggle OFF .....

TNR
Antenna ExEy .....
Mode A-32 .....
Sweep ACE .....
  
```