

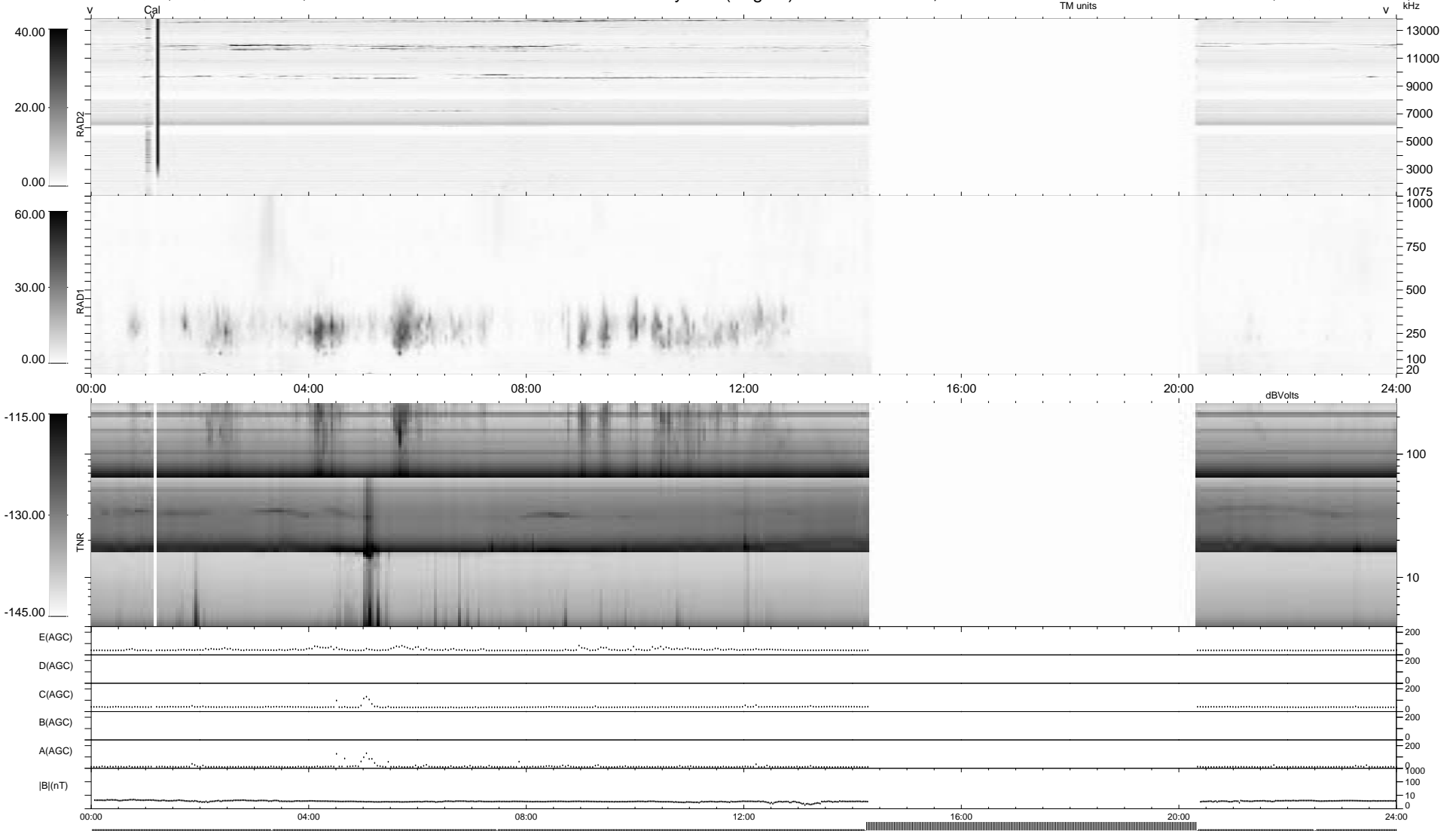
6 bad + 695 good MF/939MF projected (74%) - 238 missing MFs
 Avg interval = 180 secs
 Re = - 201.32 (197.71, -32.82, -19.05 GSE)

1.7d VMS-SunOS

LZ version = v01

WIND/WAVES Summary Plot (Page 1) for 25-FEB-2009, DOY = 56

DAILY Fri Feb 27, 2009
 Re = 200.67 (197.59, -29.16, -19.32 GSE)



```

RAD2
Antenna Ey .....
Mode LIN(1) .....
SUM/SEP SEP .....
Toggle OFF .....

RAD1
Antenna Ex .....
Mode LIS(2,4) .....
SUM/SEP SUM .....
Toggle OFF .....

TNR
Antenna ExEy .....
Mode A-32 .....
Sweep ACE .....
  
```