

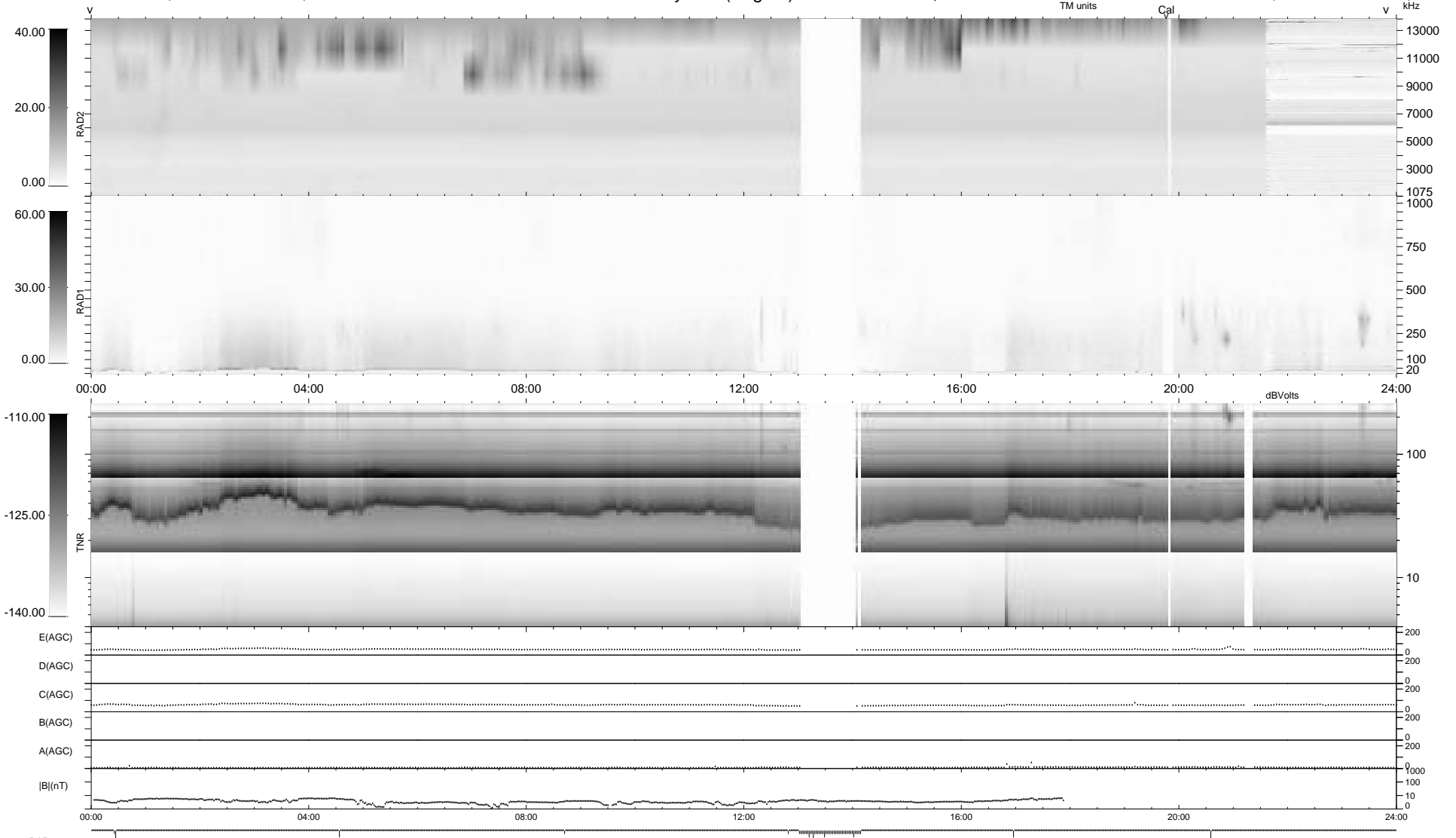
52 bad + 887 good MF/939MF projected (94%) - 0 missing MFs  
 Avg interval = 180 secs  
 Re = 205.21 (198.22, -50.21, -17.21 GSE)

1.7d VMS-SunOS

LZ version = v01

### WIND/WAVES Summary Plot (Page 1) for 20-FEB-2009, DOY = 51

DAILY Sat Feb 21, 2009  
 Re = 204.36 (198.12, -46.92, -17.63 GSE)



```

RAD2
Antenna Ey .....
Mode LIS(0.0) ..... LIN(J)
SUM/SEP SUM ..... SEP
Toggle OFF .....

RAD1
Antenna Ex .....
Mode LIS(0.0) ..... LIS(24)
SUM/SEP SUM .....
Toggle OFF .....

TNR
Antenna ExEy .....
Mode A-32 .....
Sweep ACE .....
  
```