

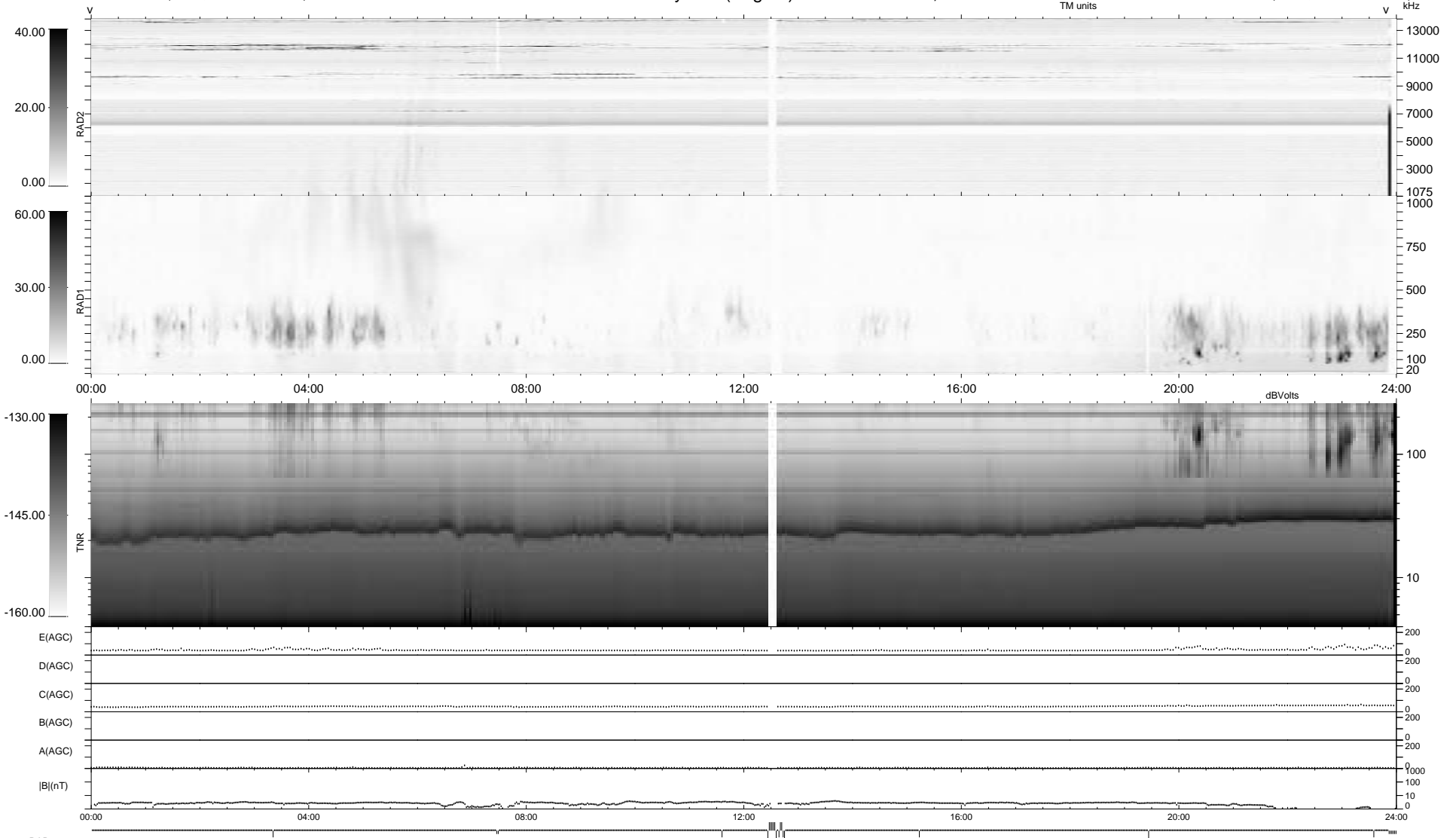
18 bad + 914 good MF/939MF projected (97%) - 7 missing MFs
 Avg interval = 180 secs
 Re = 207.00 (198.47, -56.52, -16.25 GSE)

1.7d VMS-SunOS

LZ version = v03

WIND/WAVES Summary Plot (Page 1) for 18-FEB-2009, DOY = 49

DAILY Tue Feb 24, 2009
 Re = 206.09 (198.34, -53.44, -16.74 GSE)



```

RAD2
Antenna Ey .....
Mode LIN(1) .....
SUM/SEP SEP .....
Toggle OFF .....

RAD1
Antenna Ex .....
Mode LIS(2/4) .....
SUM/SEP SUM .....
Toggle OFF .....

TNR
Antenna ExEy .....
Mode A-32 .....
Sweep ACE .....
  
```