

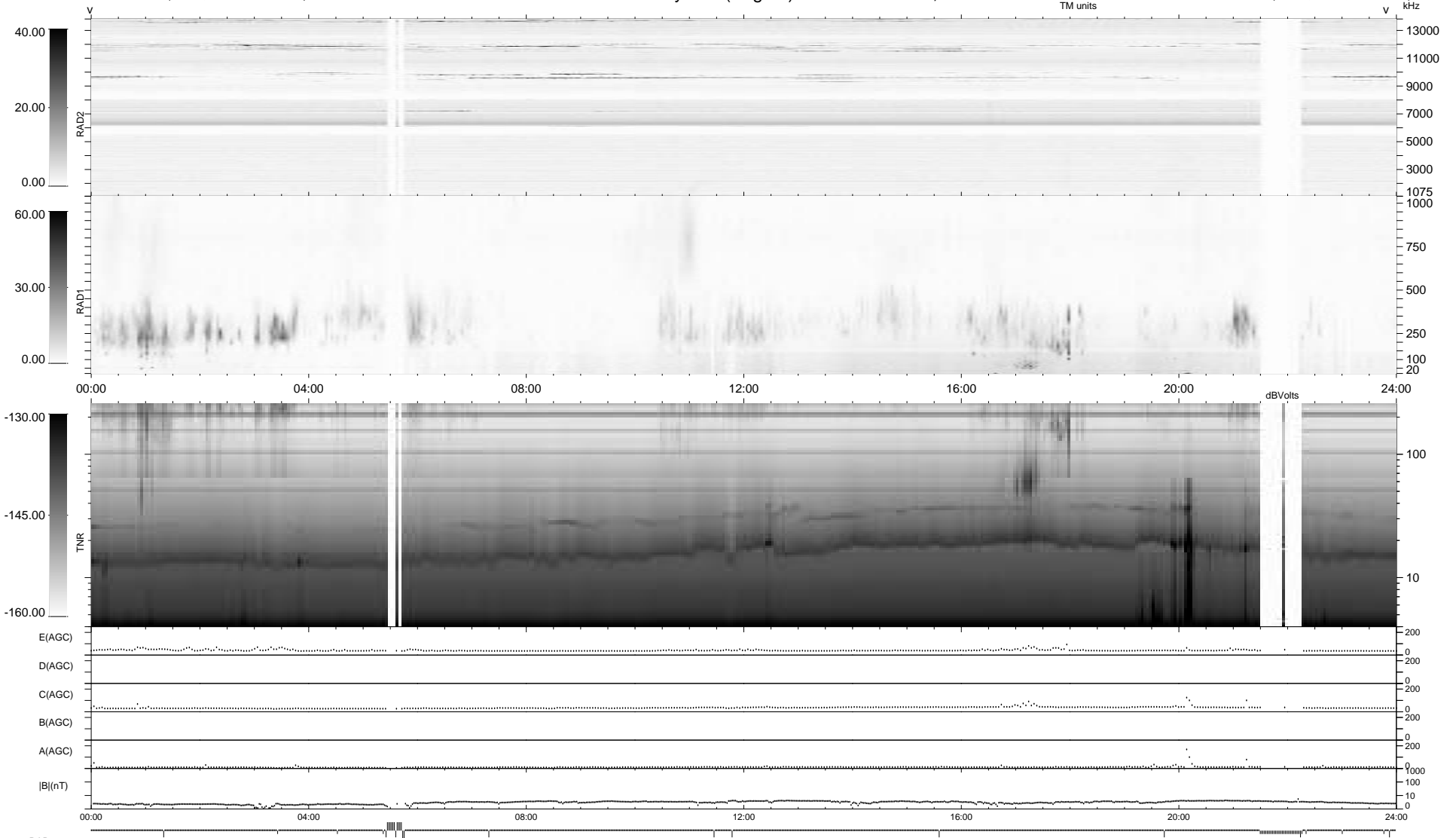
48 bad + 881 good MF/939MF projected (93%) - 10 missing MFs
 Avg interval = 180 secs
 Re = - 208.93 (198.82, -62.38, -15.18 GSE)

1.7d VMS-SunOS

LZ version = v02

WIND/WAVES Summary Plot (Page 1) for 16-FEB-2009, DOY = 47

DAILY Wed Feb 18, 2009
 Re = 207.95 (198.63, -59.53, -15.73 GSE)



```

RAD2
Antenna Ey .....
Mode LIN(1) .....
SUM/SEP SEP .....
Toggle OFF .....

RAD1
Antenna Ex .....
Mode LIS(2/4) .....
SUM/SEP SUM .....
Toggle OFF .....

TNR
Antenna ExEy .....
Mode A-32 .....
Sweep ACE .....
  
```