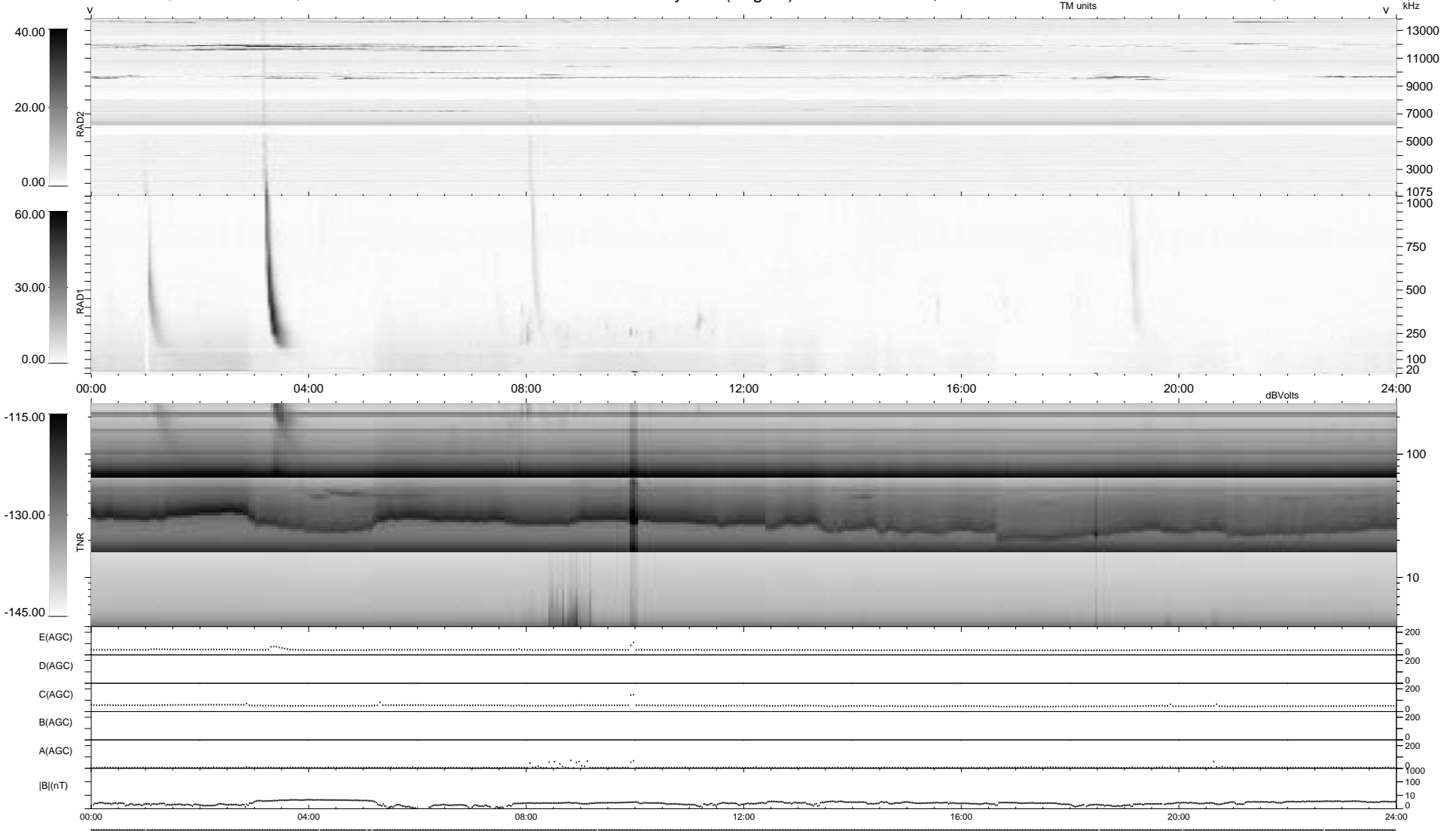


8 bad + 931 good MF/939MF projected (99%) - 0 missing MFs  
 Avg interval = 180 secs  
 Re = 218.03 (202.22, -80.89, -9.92 GSE)

1.7d VMS-SunOS LZ version = v01  
 DAILY Mon Feb 9, 2009  
 Re = 216.76 (201.57, -79.00, -10.64 GSE)

### WIND/WAVES Summary Plot (Page 1) for 08-FEB-2009, DOY = 39



```

RAD2
Antenna Ey .....
Mode LIN(1) .....
SUM/SEP SEP .....
Toggle OFF .....

RAD1
Antenna Ex .....
Mode LIS(2,4) .....
SUM/SEP SUM .....
Toggle OFF .....

TNR
Antenna ExEy .....
Mode A-32 .....
Sweep ACE .....
  
```