

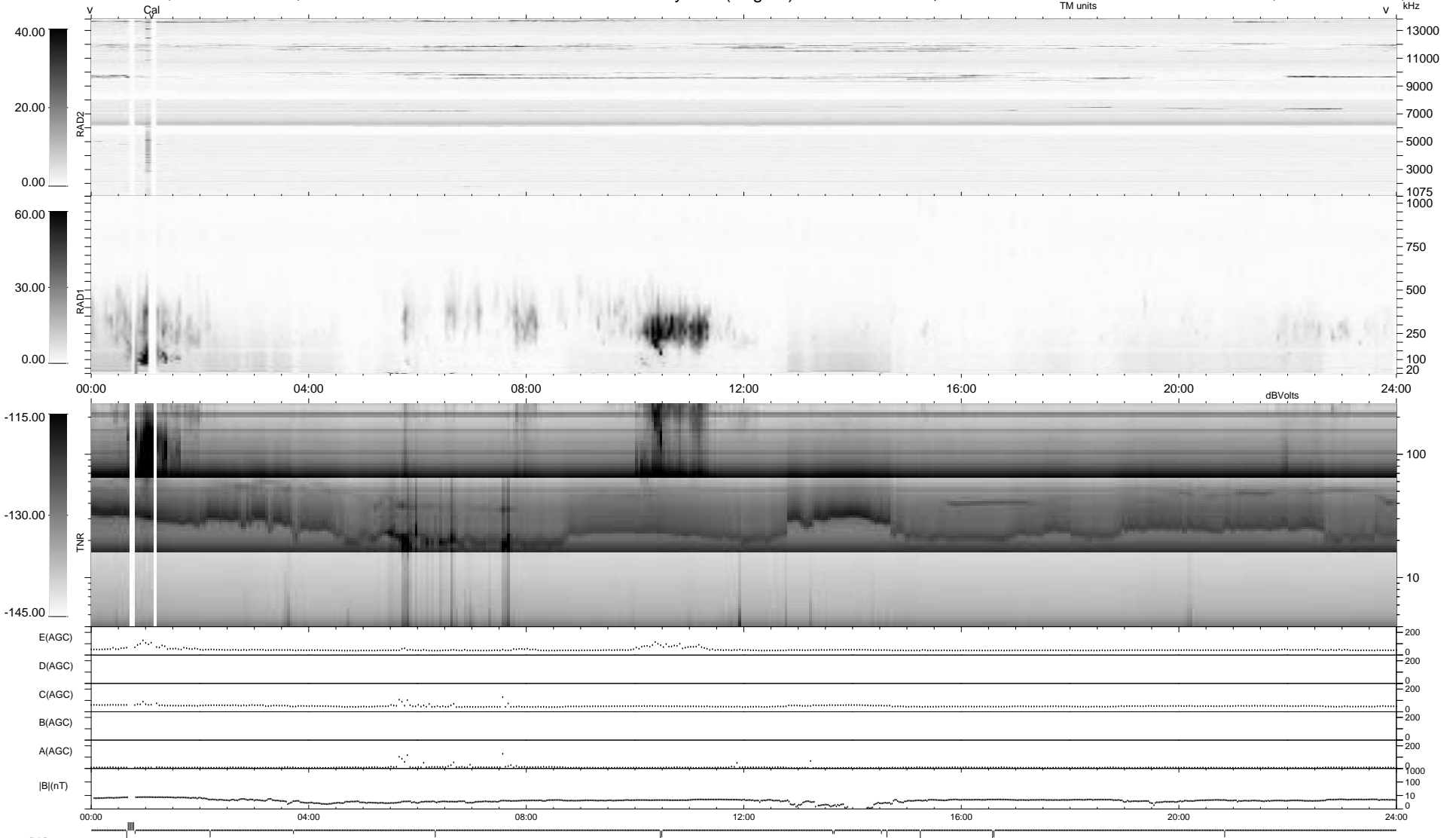
15 bad + 919 good MF/939MF projected (97%) - 5 missing MFs
 Avg interval = 180 secs
 Re = 222.08 (204.60, -86.03, -7.67 GSE)

1.7d VMS-SunOS

LZ version = v01

WIND/WAVES Summary Plot (Page 1) for 05-FEB-2009, DOY = 36

DAILY Mon Feb 9, 2009
 Re = 220.71 (203.75, -84.42, -8.43 GSE)



```

RAD2
Antenna Ey .....
Mode LIN(1) .....
SUM/SEP SEP .....
Toggle OFF .....

RAD1
Antenna Ex .....
Mode LIS(2/4) .....
SUM/SEP SUM .....
Toggle OFF .....

TNR
Antenna ExEy .....
Mode A-32 .....
Sweep ACE .....
  
```