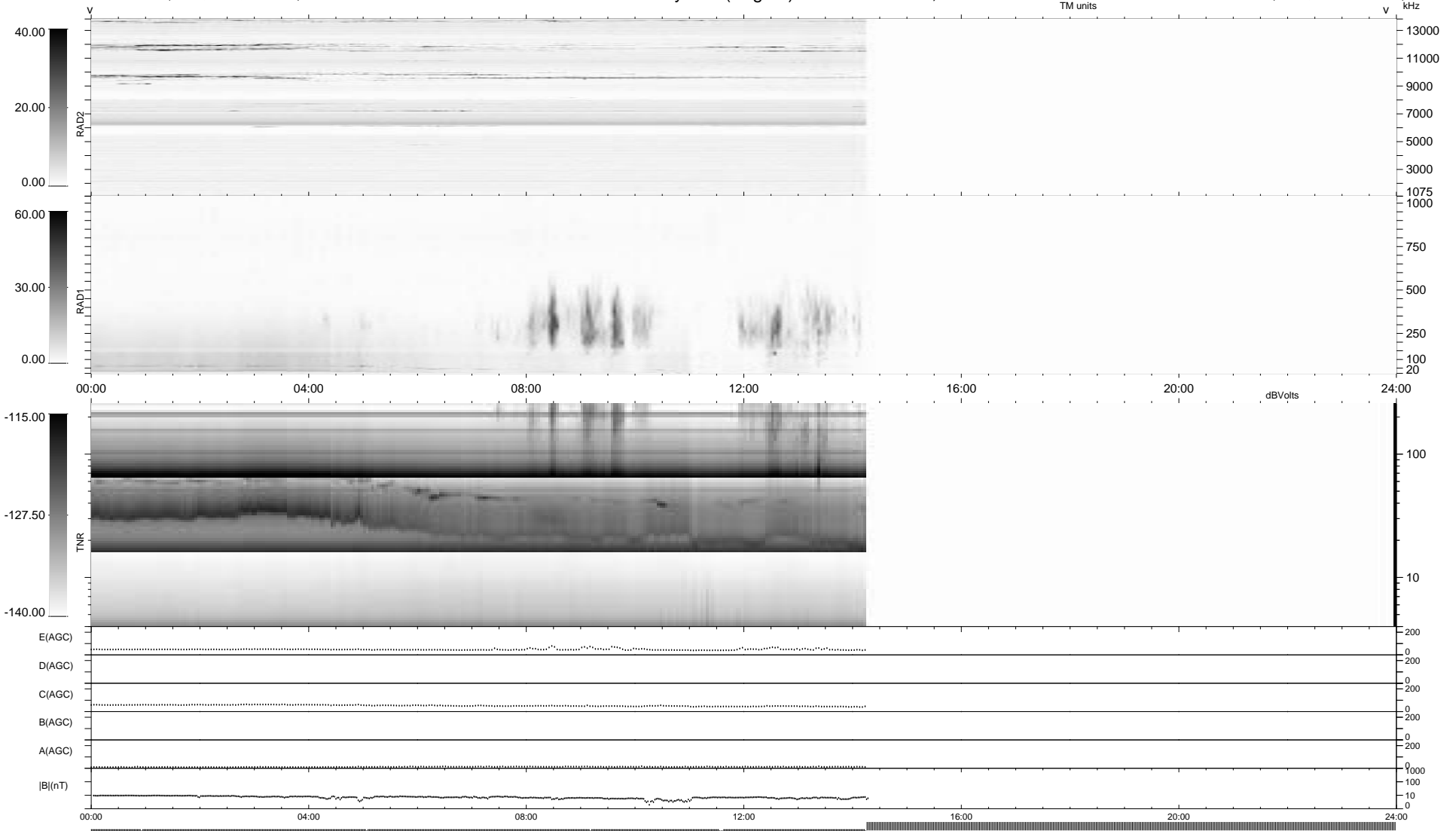


7 bad + 551 good MF/939MF projected (58%) - 381 missing MFs
 Avg interval = 180 secs
 Re = -229.15 (209.47, -92.84, -3.79 GSE)

1.7d VMS-SunOS LZ version = v01
 DAILY Sun Feb 1, 2009
 Re = 227.76 (208.45, -91.66, -4.57 GSE)

WIND/WAVES Summary Plot (Page 1) for 31-JAN-2009, DOY = 31



```

RAD2
Antenna Ey .....
Mode LIN(1) .....
SUM/SEP SEP .....
Toggle OFF .....

RAD1
Antenna Ex .....
Mode LIS(2/4) .....
SUM/SEP SUM .....
Toggle OFF .....

TNR
Antenna ExEy .....
Mode A-32 .....
Sweep ACE .....
  
```