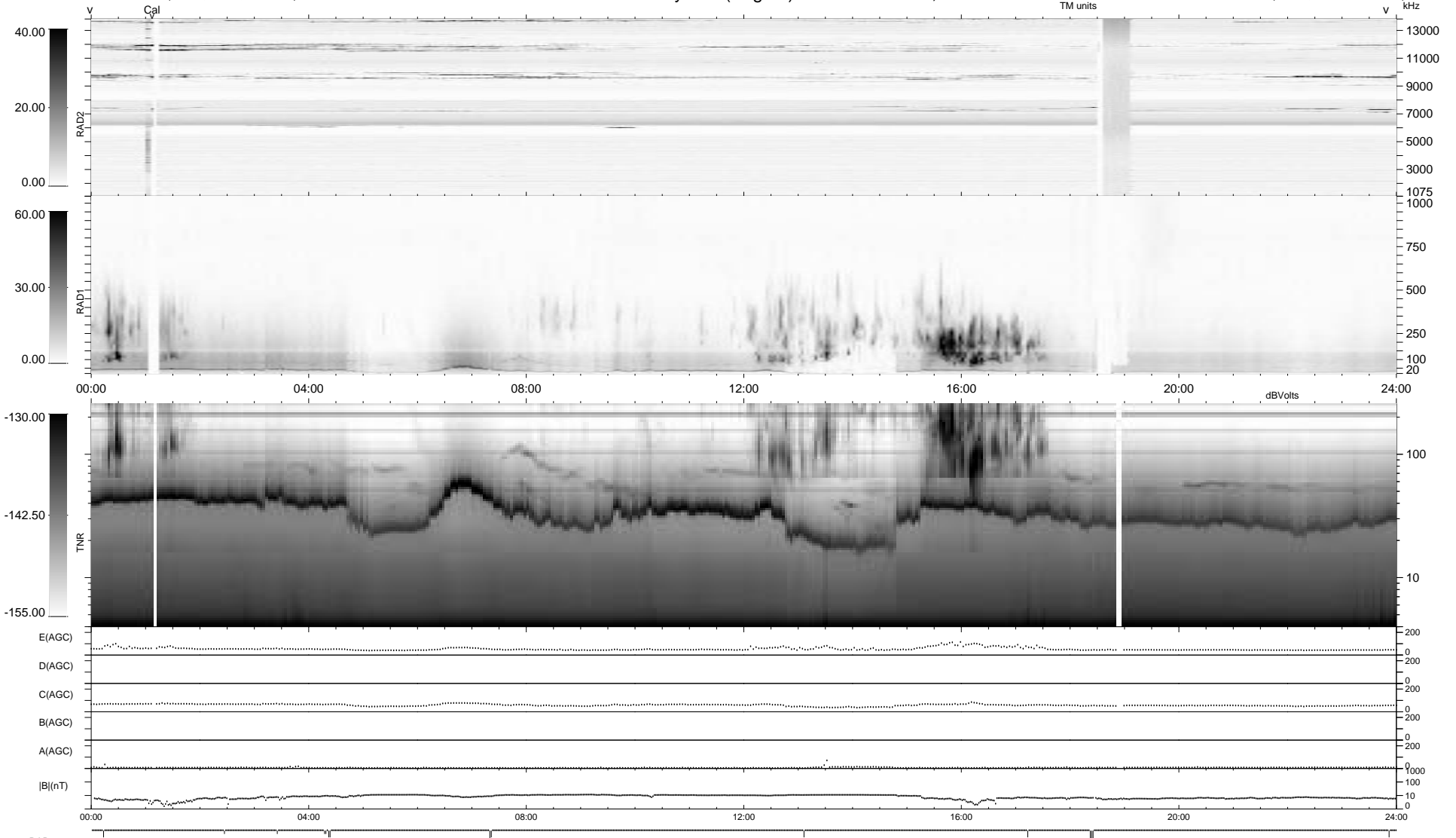


15 bad + 924 good MF/939MF projected (98%) - 0 missing MFs  
 Avg interval = 180 secs  
 Re = 235.68 (214.72, -97.16, 0.15 GSE)

1.7d VMS-SunOS LZ version = v02  
 DAILY Mon Feb 2, 2009  
 Re = 234.47 (213.68, -96.53, -0.63 GSE)

### WIND/WAVES Summary Plot (Page 1) for 26-JAN-2009, DOY = 26



```

RAD2
Antenna Ey ..... LIN(1) ..... LIN(1)
Mode LIN(1) ..... SEP.
SUM/SEP SEP.
Toggle OFF .....

RAD1
Antenna Ex ..... LIS(2,4) ..... LIS(2,4)
Mode LIS(2,4) .....
SUM/SEP SUM.
Toggle OFF .....

TNR
Antenna ExEy .....
Mode A-32 .....
Sweep ACE .....
  
```