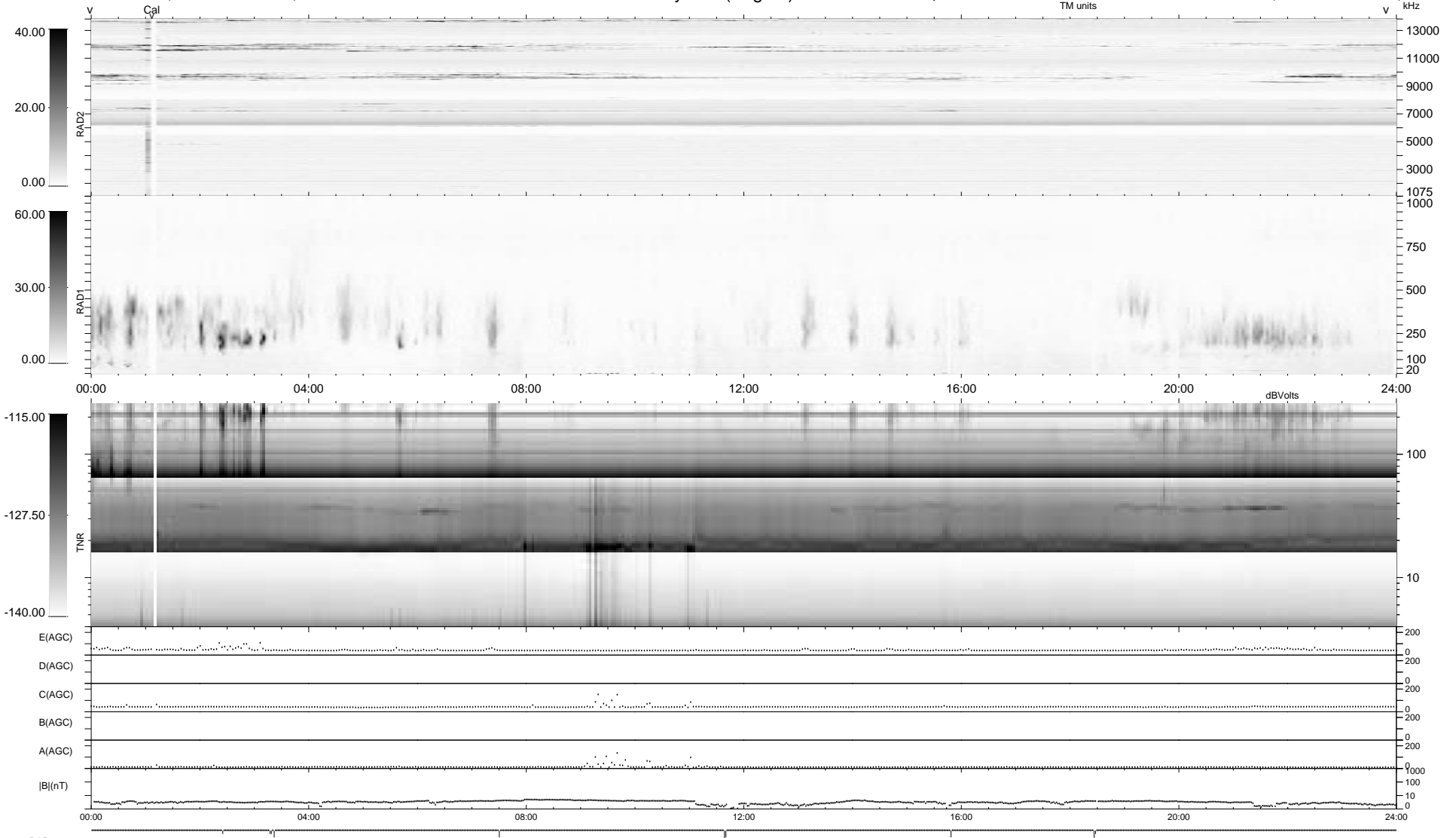


10 bad + 929 good MF/939MF projected (98%) - 0 missing MFs  
 Avg interval = 180 secs  
 Re = 241.79 (220.95, -98.09, 4.88 GSE)

1.7d VMS-SunOS LZ version = v01  
 DAILY Thu Jan 22, 2009  
 Re = 240.93 (219.93, -98.29, 4.10 GSE)

### WIND/WAVES Summary Plot (Page 1) for 20-JAN-2009, DOY = 20



```

RAD2
Antenna Ey .....
Mode LIN(1) .....
SUM/SEP SEP .....
Toggle OFF .....

RAD1
Antenna Ex .....
Mode LIS(2,4) .....
SUM/SEP SUM .....
Toggle OFF .....

TNR
Antenna ExEy .....
Mode A-32 .....
Sweep ACE .....
  
```