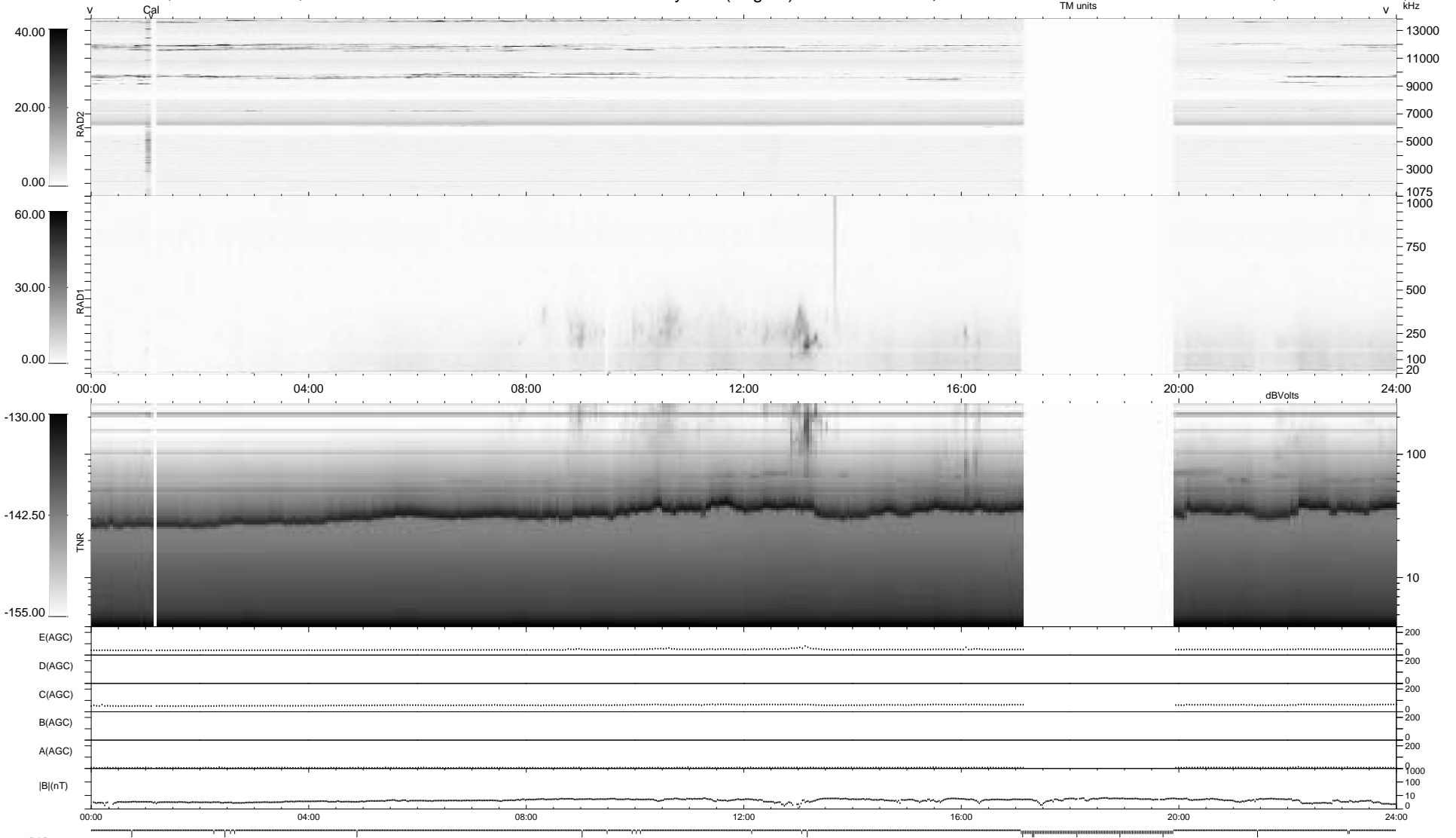


127 bad + 812 good MF/939MF projected (86%) - 0 missing MFs
 Avg interval = 180 secs
 Re = 249.81 (234.70, -84.43, 13.80 GSE)

1.7d VMS-SunOS LZ version = v02
 DAILY Wed Feb 25, 2009
 Re = 249.17 (233.42, -86.21, 13.13 GSE)

WIND/WAVES Summary Plot (Page 1) for 08-JAN-2009, DOY = 8



```

RAD2
Antenna Ey .....
Mode LIN(1) .....
SUM/SEP SEP .....
Toggle OFF .....

RAD1
Antenna Ex .....
Mode LIS(2/4) .....
SUM/SEP SUM .....
Toggle OFF .....

TNR
Antenna ExEy .....
Mode A-32 .....
Sweep ACE .....
  
```