

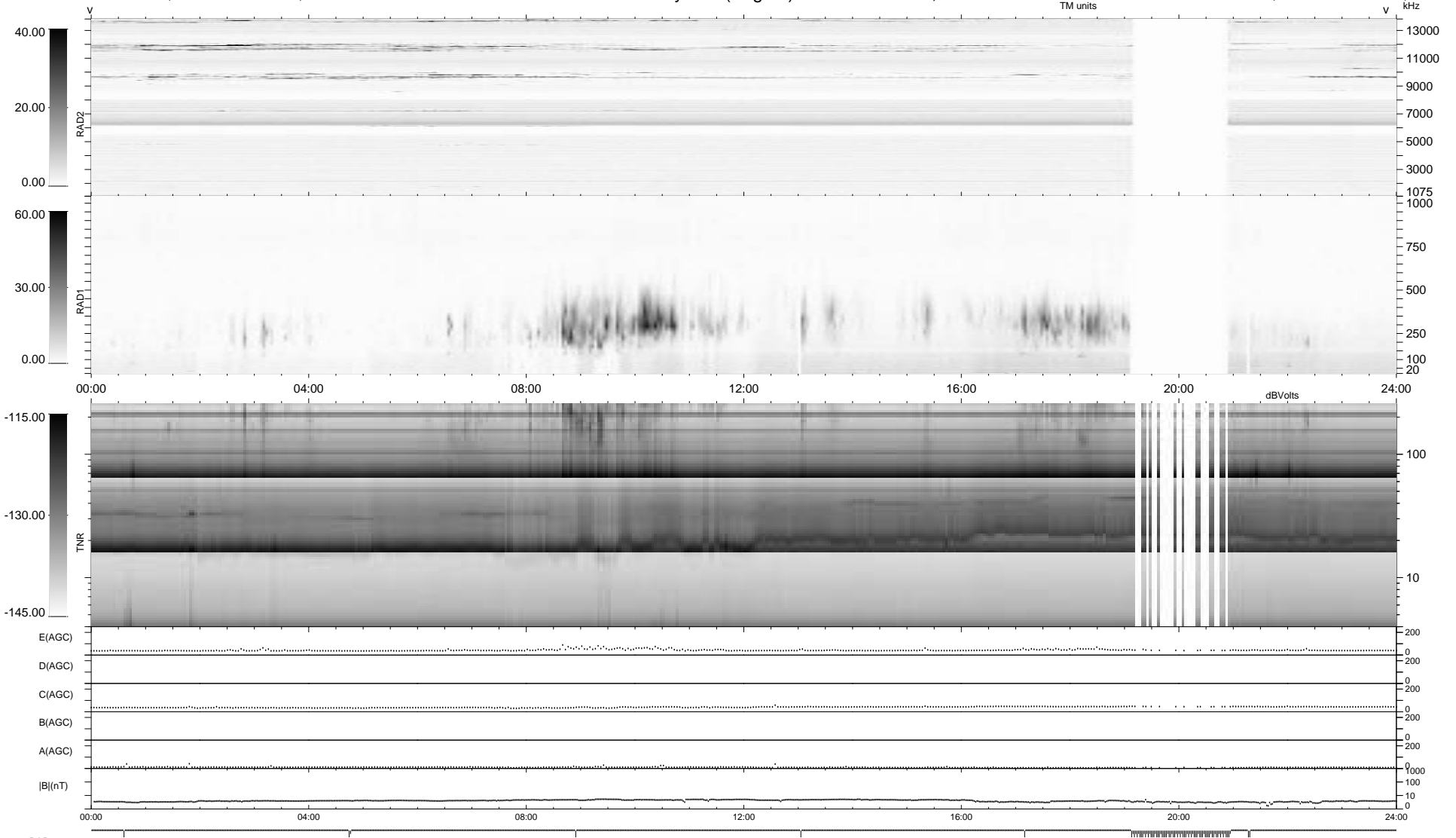
80 bad + 859 good MF/939MF projected (91%) - 0 missing MFs  
 Avg interval = 180 secs  
 Re = -251.72 (238.63, -78.57, 15.73 GSE)

1.7d VMS-SunOS

LZ version = v01

WIND/WAVES Summary Plot (Page 1) for 05-JAN-2009, DOY = 5

DAILY Tue Jan 6, 2009  
 Re = 251.09 (237.33, -80.58, 15.11 GSE)



RAD2  
 Antenna Ey  
 Mode LIN(1)  
 SUM/SEP SEP  
 Toggle OFF

RAD1  
 Antenna Ex  
 Mode LIS(2/4)  
 SUM/SEP SUM  
 Toggle OFF

TNR  
 Antenna ExEy  
 Mode A-32  
 Sweep ACE