

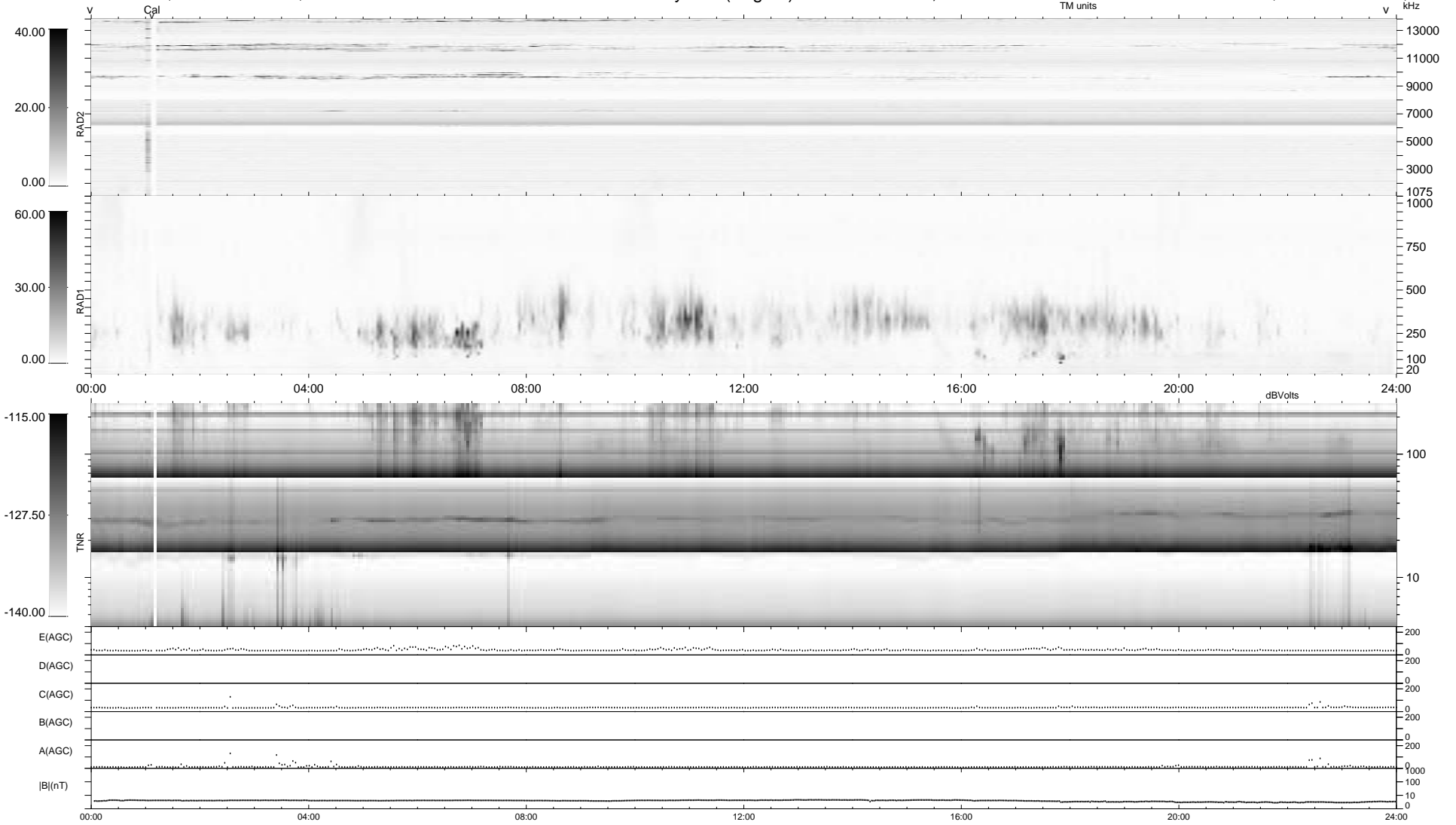
9 bad + 930 good MF/939MF projected (99%) - 0 missing MFs
 Avg interval = 180 secs
 Re = -252.34 (239.92, -76.49, 16.33 GSE)

1.7d VMS-SunOS

LZ version = v01

WIND/WAVES Summary Plot (Page 1) for 04-JAN-2009, DOY = 4

DAILY Tue Jan 6, 2009
 Re = 251.72 (238.63, -78.56, 15.73 GSE)



RAD2 Antenna Ey
 Mode LIN(1)
 SUM/SEP SEP
 Toggle OFF
 RAD1 Antenna Ex
 Mode LIS(2,4)
 SUM/SEP SUM
 Toggle OFF
 TNR Antenna ExEy
 Mode A-32
 Sweep ACE