

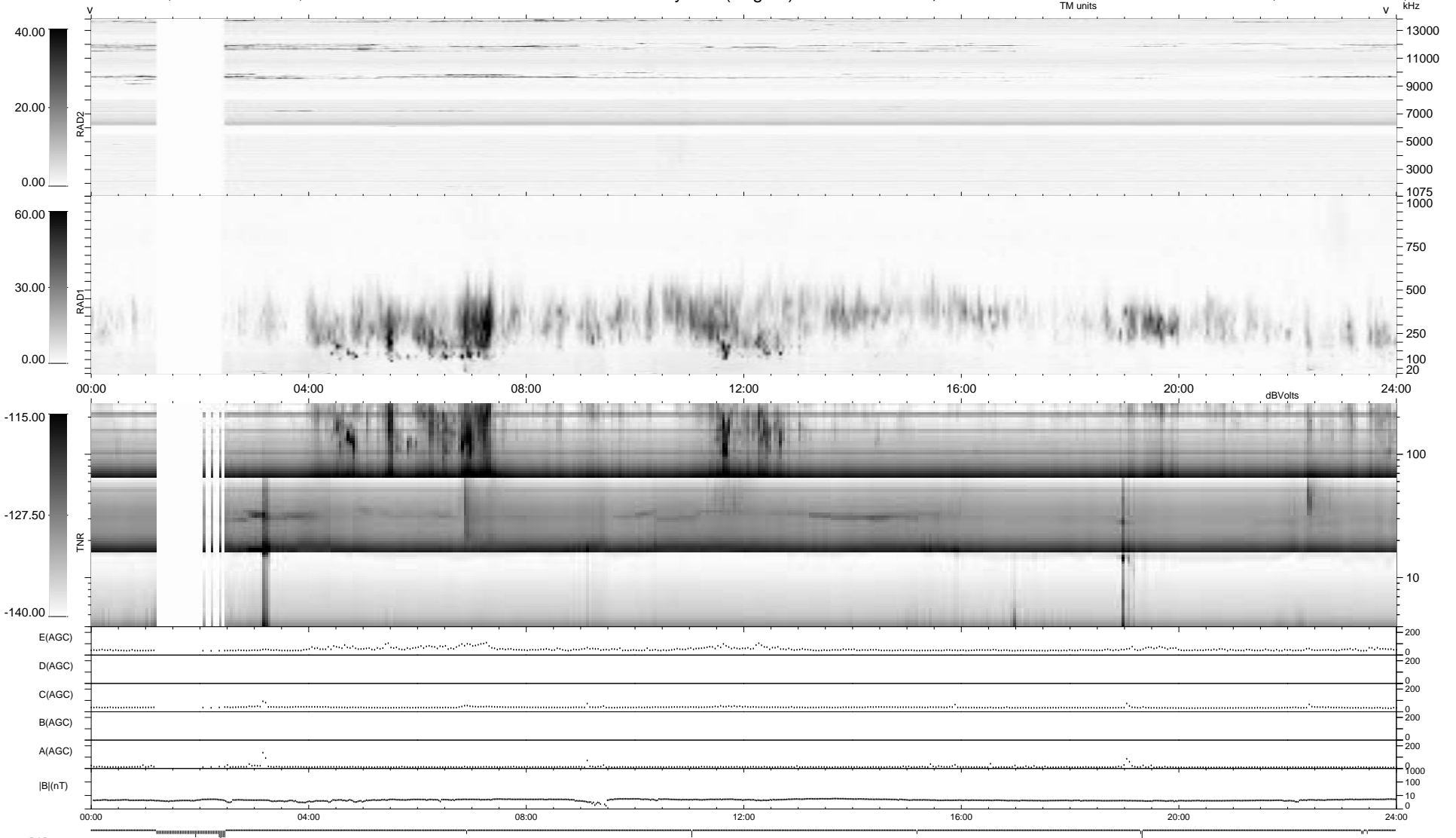
58 bad + 881 good MF/939MF projected (93%) - 0 missing MFs
 Avg interval = 180 secs
 Re = -254.07 (243.61, -69.85, 18.01 GSE)

1.7d VMS-SunOS

LZ version = v01

WIND/WAVES Summary Plot (Page 1) for 01-JAN-2009, DOY = 1

DAILY Fri Jan 2, 2009
 Re = 253.53 (242.43, -72.11, 17.47 GSE)



```

RAD2
Antenna Ey .....
Mode LIN(1) .....
SUM/SEP SEP .....
Toggle OFF .....

RAD1
Antenna Ex .....
Mode LIS(2/4) .....
SUM/SEP SUM .....
Toggle OFF .....

TNR
Antenna ExEy .....
Mode A-32 .....
Sweep ACE .....
  
```