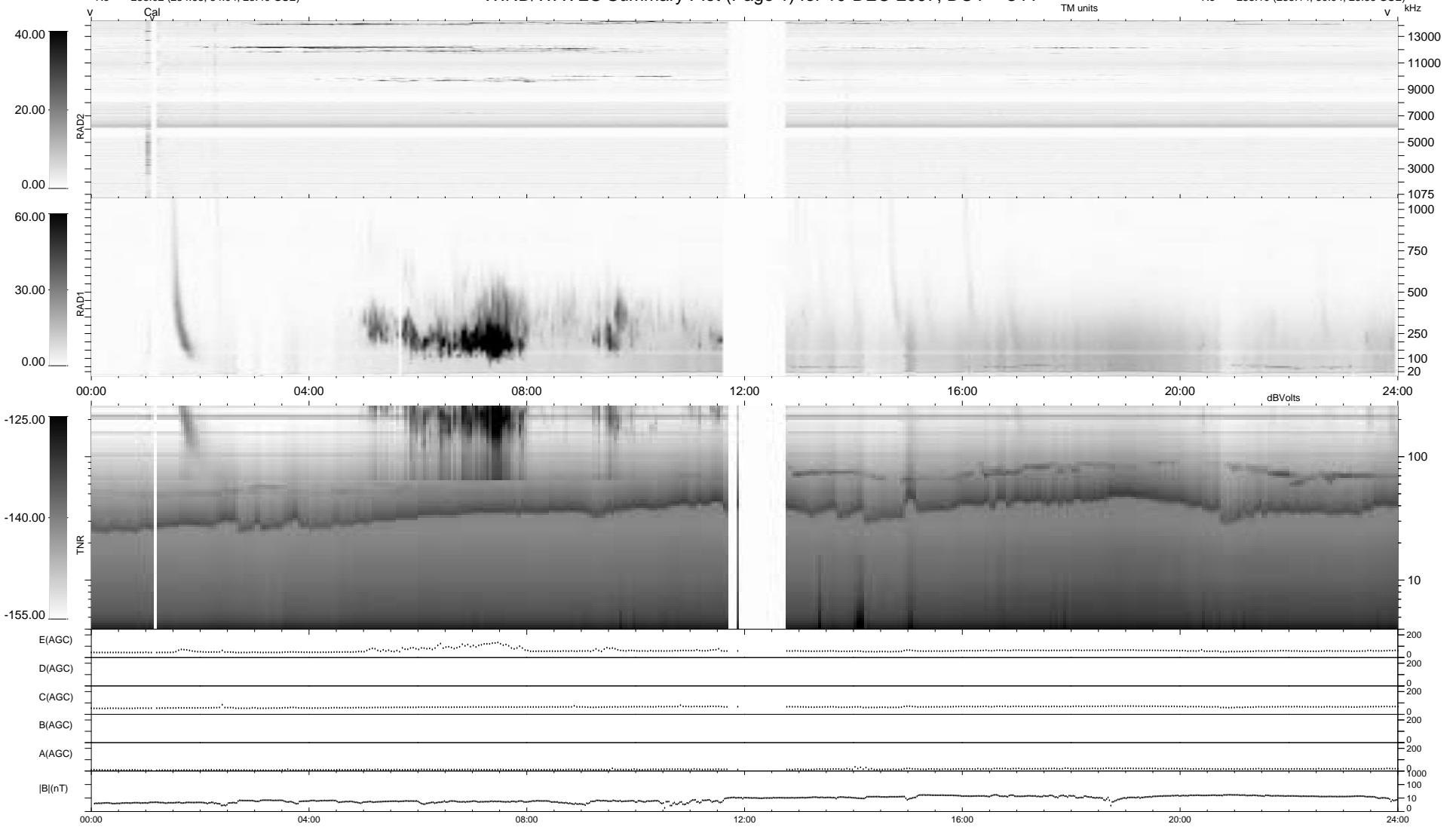


0 bad + 2 good MF/ZMF projected (100%) - 0 missing MFs  
 Avg interval = 180 secs  
 Re = -258.02 (254.68, 34.04, 23.49 GSE)

1.7d VMS-SunOS LZ version = v02  
 DAILY Thu Aug 28, 2008  
 Re = 258.10 (255.14, 30.94, 23.66 GSE)

### WIND/WAVES Summary Plot (Page 1) for 10-DEC-2007, DOY = 344



```

RAD2
Antenna Ey .....
Mode LIN(1) .....
SUM/SEP SEP .....
Toggle OFF .....

RAD1
Antenna Ex .....
Mode LIS(2/4) .....
SUM/SEP SUM .....
Toggle OFF .....

TNR
Antenna ExEy .....
Mode A-32 .....
Sweep ACE .....
  
```